



Will County Community Health Plan



IPLAN
Illinois Project for Local Assessment of Needs
2020-2025



TABLE OF CONTENTS

Will County Board of Health Resolution.....	3
Executive Summary.....	4
Organizational and Partnership Development.....	6
Visioning.....	10
MAPP Assessments.....	11
Community Health Status Assessment.....	11
Community Themes and Strengths Assessment.....	16
Forces of Change Assessment.....	19
Local Public Health System Assessment.....	21
Strategic Planning and Prioritization.....	24
Community Health Plan.....	27
Action and Implementation.....	32
Coronavirus Pandemic of 2020.....	41
Appendices.....	47
Healthy People 2020 Comparison.....	47
Community Health Needs Logic Models and Strategy Chart	
Behavioral Health and Substance use.....	47
Access to Health Care.....	51
Access to Food and Nutrition.....	57
Stabilizing the Built Environment.....	61
MAPP Collaborative Partnership List	64
Local Public Health Evaluation.....	69
Community Survey.....	94

Abbreviations

- (CDC) Center for Disease Control
- (CHC) Community Health Center
- (CHSA) Community Health Status Assessment
- (CoC) Continuum of Care
- (CMS) Center for Medicare and Medicaid
- (CTSA) Community Themes and Strengths Assessment
- (EPHS) Essential Public Health Services
- (FOCA) Forces of Change Assessment
- (FQHC) Federally Qualified Health Center
- (IPLAN) Illinois Project for Local Assessment of Needs
- (KAP) Knowledge, Attitudes, Perceptions
- (LPHSA) Local Public Health System Assessment
- (MAPP) Mobilizing for Action through Planning and Partnerships
- (NACCHO) National Association for City and County Health Officials
- (NAMI) National Alliance on Mental Illness
- (PPE) Personal Protective Equipment
- (WCCCC) Will County Center for Community Concerns
- (WCCHC) Will County Community Health Center
- (WCHD) Will County Health Department
- (WGMC) Will Grundy Medical Clinic
- (YMCA) Young Men's Christian Association



Will County
Health Department &
Community Health Center

Will County Board of Health
Resolution #20-59

Resolution of the Will County Board of Health Will County, Illinois

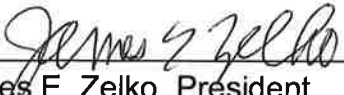
APPROVAL FOR THE ILLINOIS PROJECT FOR LOCAL ASSESSMENT OF NEEDS (IPLAN) AND THE INTERNAL ORGANIZATION CAPACITY PLAN OF ACTION UPDATES

WHEREAS, the Will County Health Department has completed the requirements for certification under Title 77 Illinois Administrative Code, Section 600.400 Public Health Practice Standards and Section 600.410 Requirements for the Illinois Project for Local Assessment of Needs (IPLAN), and,

WHEREAS, the Board of Health acknowledges that the Organization Capacity Self-Assessment was conducted and reviewed.

NOW, THEREFORE, BE IT RESOLVED the Board of Health accepts the updated IPLAN and the Organization Capacity Assessment as presented.

DATED THIS 18th day of November 2020.



James E. Zelko, President
Will County Board of Health

EXECUTIVE SUMMARY

Every five years local health departments in the state of Illinois are required to complete a local needs assessment and community health plan to become or remain a certified health department. This planning process is known as Illinois Project for Local Assessment of Needs (IPLAN), as set forth in Title 77 of the Illinois Administrative Code Part 600. The code provides the following guidelines necessary for health departments to complete the process:

- Community participation in the needs assessment and development of the community health plan
- Review of the IPLAN Data System and other data sets that provides a picture of the health status of the community
- Identify health problems, set priorities and analysis of those priorities
- Set objectives and strategies to address the identified priority health problems
- Complete an organizational capacity assessment of the local health department
- Adoption of the IPLAN by the local board of health

Will County Health Department selected to use the Mobilizing for Action through Planning and Partnership (MAPP) process. MAPP is a six-phase process that provides a comprehensive framework for assessing critical local health concerns and developing plans to address those concerns. The initial MAPP assessment for Will County began in 2008. The fourth iteration of MAPP assessments began in 2018.

Purpose

The Will County IPLAN is a collaborative effort of the Will County MAPP Collaborative. The purpose of the IPLAN is to provide a community plan that is developed by and for the community. The MAPP Project was established in 2008 as an effort to meet the IRS guidelines for not-for-profit hospitals and the requirements of the Illinois Department of Public Health for local health department certification. A 25 member steering committee guided the community through the MAPP strategic planning framework. The assessment phase was completed in 2010, with approval of the initial plan in January 2011. The IPLAN for the fourth iteration of MAPP is set for approval in November of 2020 by the Will County Board of Health and the Will County MAPP Executive Committee.

The Will County MAPP Collaborative was formed following the completion of the MAPP Project in 2011. The MAPP Collaborative is currently made up of an Executive Committee that provides oversight to the assessment and implementation process. Action teams were established to address the priorities and implementation plan. Bylaws for the collaborative were adopted in June 2011. A staff person dedicated to the MAPP Collaborative was appointed by the Will County Health Department in March 2013, and still coordinates for the MAPP process presently. Over 100 organizations are active partners of the MAPP Collaborative with over 100 individual participants. These members renew their commitments to the MAPP collaborative through request to join and commitment forms which accompany a three year voluntary term.

The assessment and planning process is required every three years for hospitals and every five years for local health departments. The Will County Health Department has aligned its assessment process with the three year hospital requirements to avoid duplication of efforts.

The most recent MAPP strategic session was concluded in September of 2019 beginning the fourth iteration of the MAPP cycle in Will County. Objectives and implementation plans are outlined by the Action Chairs of the Action Teams assigned during the strategic planning and prioritization of community needs within Will County.

MAPP Overview

MAPP is a community-driven strategic planning framework that assists communities in developing and implementing efforts around the prioritization of public health issues and identification of resources to address them as defined by the Ten Essential Public Health Services:

- EPHS1: Monitoring Health Status
- EPHS2: Diagnoses and Investigating Needs
- EPHS3: Educate and Empower
- EPHS4: Mobilize Partnerships
- EPHS5: Develop policies/plans
- EPHS6: Enforce Laws
- EPHS7: Link to Health Services
- EPHS8: Assure Workforce
- EPHS9: Evaluate Services
- EPH10: Research/Innovate Strengths

There are six phases to the MAPP process. More information regarding these phases are provided later in this document.

- Phase 1: Planning and Organizing For Success
- Phase 2: Visioning
- Phase 3: Assessments
- Phase 4: Identifying Strategic Issues
- Phase 5: Formulate Goals and Strategies
- Phase 6: Action Cycle

Priority Community Health Needs for the fourth cycle:

- Access to Food and Nutrition
- Access to Health Care
- Behavioral Health and Substance Use
- Stabilizing the Built Environment

ORGANIZATION & PARTNERSHIP DEVELOPMENT

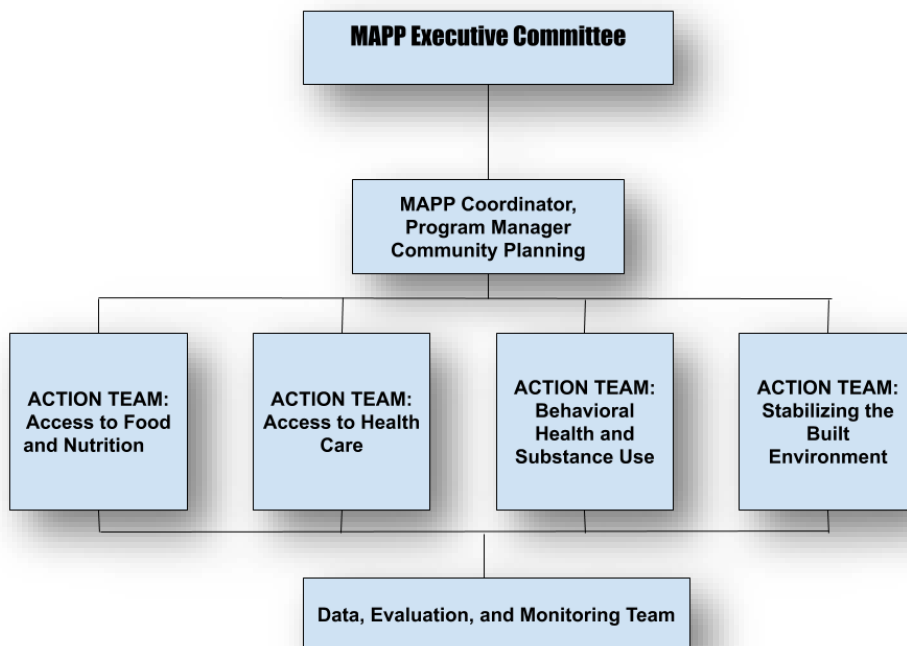
Phase 1

The Will County MAPP Collaborative, since its instatement in 2011, has organized the collaboration of over 130 cross sector organizations to work towards implementing actions that can work to meet community health needs for residents of Will County. The current executive committee of the MAPP Collaborative consists of over 30 members from various organizations in the county that govern the assessment and evaluation process of the NACCHO guided MAPP cycle, budgetary decisions, and the effectiveness of meeting community needs. A set of by-laws were adopted in June 2011 and updated in January of 2020 to include the implementation of virtual meeting requirements and virtual polling. Funding is provided by AMITA Bolingbrook Hospital, Will County Senior Services, Edward-Elmhurst Hospital, AMITA Saint Joseph Medical Center, Silver Cross Hospital and Will County Health Department and Community Health Center.

The Will County MAPP Collaborative consists of an Executive Committee, four Action Teams, a Data, Evaluation and Monitoring (DEM) Team and general membership as depicted in the organizational chart below. The current roster includes approximately 100 individuals representing over 100 partnering agencies. See Appendix for MAPP Partnership list.

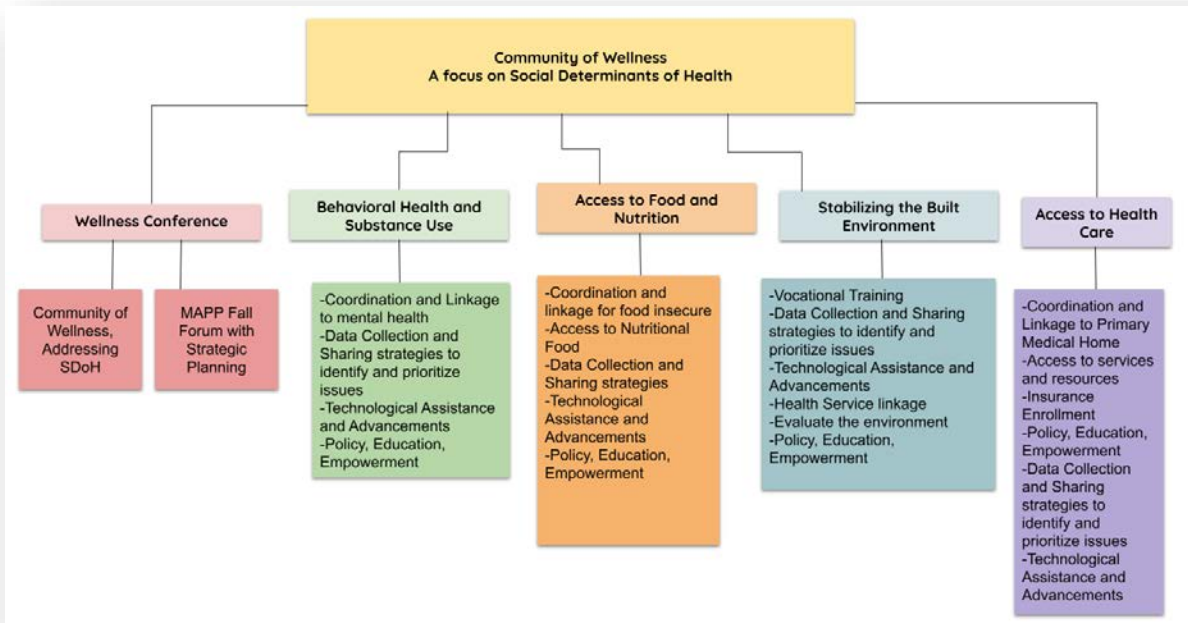
Executive Committee

The Executive Committee provides oversight to the action teams and the ongoing MAPP process. The Executive Committee meets quarterly to review progress and provide expert recommendations and overall operations of the Will County MAPP Collaborative. A program coordinator was appointed in March 2013. The coordinator is a full-time program manager of the Will County Health Department, partially funded by the Will County MAPP Collaborative.



Action Teams

Action Teams were established around the identified priorities and have been implementing action plans and strategies to address those needs. The Action Teams are led by co-chairs from various partner organizations. Action Teams meet monthly.



Data, Evaluation and Monitoring (DEM) Team

The Data, Evaluation and Monitoring (DEM) Team was established in April 2013 to review and monitor the progress of the Action Teams and maintain and update data for the assessments. The team also serves as a resource for the data needs of the Action Teams.

General Membership

The general membership consists of partners not involved directly with an Action Team but participate as appropriate for their organization. They contribute to the overall assessment process and some implementation strategies. General membership now includes community member participation; with the goal of participation in surveys and community level assessments, as well as educational media and marketing communications. Individuals can become general members by visiting our MAPP Collaborative website or the “Know Where to GO” website. These members receive newsletters, event invitations open to the public, educational communication and more.

Process

Phase one of the fourth iteration of the MAPP process was initiated in August 2018. As the MAPP process satisfies local health department and hospital requirements for the completion of a community health needs assessment, a crosswalk between the MAPP Framework, the IRS guidelines and Illinois Department of Public Health’s Illinois Project for Local Assessment of Need (IPLAN) requirements was created and reviewed to ensure all requirements would be met. Planning meetings were held in September and October between hospital and health department staff to discuss the process. The Executive Committee met to discuss the timeline and budget. The MAPP Collaborative conducted the four phase assessments with the use of survey technology, QR codes and media promotion, and some in person surveillance.

Community Involvement

Community members are joined as members of our Action teams, as well as general members to join in on taking local community assessments and survey, outreach participation, educational and media communications and more through prototype exposure and web development exposures. The MAPP collaborative offers outreach participation, presentations of evidence-based data in community platforms, interactions through media communications, and linkage and sharing of partnership services through advancing and utilizing robust technological assistance.

The Community of Wellness Conference

In addition to the MAPP Strategic Planning Forum held at the end of the MAPP assessment cycle, the Executive Committee has approved a proposal to host an annual “Community of Wellness” Conference for Will County. The Will County MAPP collaborative coordinator, in addition to organizations such as the Greater Area Joliet YMCA and Silver Cross Hospital will work together to strategically and logistically organize a yearly “Wellness Conference”. The Conference will provide information to community members and system stakeholders alike related to topics in which incorporate wellness into the workplace, incorporate wellness into the community, and incorporate wellness into the system as a whole. The WeWill Work Healthy Awards will be conducted and presented during this conference, in addition to topics including health and safety promotion, emergency response, chronic disease and nutrition, mindfulness and inclusion, substance use, and other current topics in public health; such as housing insecurity, food access, behavioral health, and accessing health services. Vendors will be invited to promote and provide services and information linking or providing benchmarks to other local organizations. Vendors may include: Family Guidance, NAMI, Aunt Martha’s, Will County Health Department, Regional MAPP groups such as: Impact DuPage, Kane Counts, and MAPP members from Kankakee, Grundy counties, Local YMCA and fitness organizations and affiliates, engagement tables for Will County Health Department and Will County Community Health Center, and more.

Speakers will be invited based on current topics, including but not limited to updates from the devised strategic planning tasks forces from the MAPP Collaborative to share initiatives that have occurred and are occurring in the near future, as well as any measurable data that has been collected and analyzed thus far. This event will be held annually during the first two years of the MAPP cycle, concluding the final year with Assessment Findings and Evaluation during our strategic planning session/MAPP Forum.

VISIONING

Phase 2

Visioning is the second phase in the MAPP process. It allows participants to collectively create a shared vision for the future. A vision statement provides focus, purpose and direction to the MAPP process. In April 2009, during the first cycle of the MAPP process in Will County, the MAPP Steering Committee adopted the following vision statement:

“In Will County, every life has value. All individuals have the opportunity to realize their full potential and to achieve the highest quality of life. We are a community rich in diversity, where involvement and commitment have deep roots among our residents.

We strive to be a progressive community that maximizes the use of community partnerships and collaboration among all sectors to endure, enhance and promote comprehensive, quality and equitable education, healthcare and social services.”

Process

The MAPP process recommends two possible methods for conducting the visioning process. In the first cycle, both methods were used to develop the vision statement. The fourth cycle the Executive Committee reviewed the vision statement and by consensus agreed it was still relevant for Will County. It was decided to get additional input from the broader MAPP Collaborative members via the evaluation survey used in phase one. A question was added to the survey: “How certain are you that the vision statement is reflective of Will County?” 64% of survey respondents were certain that the vision statement remained reflective of Will County.

Community Involvement

In 2020, A survey was sent to all Will County MAPP Collaborative members to see if the shared vision statement remained reflective of Will County, this survey was sent to approximately 250 participants of the collaborative partnership of Will County. Participants overwhelmingly, 94% stated that they agree with the current mission and vision statement of the Will County MAPP Collaborative, the 6% that stated they did not feel this statement was representative of Will County did not leave a comment.

MAPP ASSESSMENTS

PHASE 3

This MAPP process provides a comprehensive picture of a community in its current state using both qualitative and quantitative methods. The assessment phase provides the evidence-based catalyst that helps to inform the decisions or priorities for strategic planning. In the MAPP process, there are four assessments. Through this evaluation method, we get a broader view of the community health profile and the perceptions surrounding quality of life, needs, access and assets. The results, or key findings, from the assessments are used to identify cross-cutting themes and strategic issues in Phase Four of the MAPP process.

Community Health Status Assessment

This assessment asks, “how healthy are our residents?” What does the health status of our community look like? Information is gathered on community health indicators, quality of life and risk factors.

Community Themes and Strengths Assessment

The questions answered by this assessment are: What is important to our community? How is the quality of life perceived in our community? What assets does the community have that can be used to improve community health?

Forces of Change Assessment

The purpose of the assessment is to identify trends, threats and events that may affect how the public health system operates. It asks the questions: What is occurring or might occur that affects the health of our community or the public health system? What specific threats or opportunities are generated by these occurrences?

Local Public Health System Assessment

This assessment takes a comprehensive look at all the organizations and entities that contribute to the delivery of public health services. The questions answered in the assessment are: What are the activities, competencies and capacities of our local public health system? How effective are our organizations at providing the Ten Essential Public Health Services being provided in our community?

COMMUNITY HEALTH STATUS ASSESSMENT

The Community Health Status Assessment (CHSA) is one of four assessments conducted as a part of the MAPP strategic framework. During this assessment, information regarding health status, quality of life, behavioral risk factors, perception of emerging threats and public health access within the community is gathered and analyzed. Data is collected from a variety of resources and analyzed comparing local, state and national benchmarks where available.

Process

The Data, Evaluation and Monitoring (DEM) Team completed this assessment in December of 2018. The Data Evaluation and Monitoring team gathered data on the eleven MAPP indicators listed below. The indicators as recommended by the MAPP framework are:

1. Demographics
2. Socioeconomics
3. Health Resource Availability
4. Quality of Life
5. Behavioral Risk Factors
6. Environmental Health
7. Social and Mental Health
8. Maternal and Child Health
9. Death, Illness and Injury
10. Communicable Diseases
11. Sentinel Events

Data was gathered from a variety of sources, including the U.S. Census and American Community Survey, Illinois agencies (including Illinois Department of Public Health IQUERY and IPLAN data sets), U.S. Department of Health and Human Services and community organizations. Will County Health Department provided rich health status surveillance data as well as compiled demographic and socioeconomic data from the Census.

The Behavioral Risk Factor Surveillance System (BRFSS) is a state-based program that gathers information on risk factors among Illinois adults 18 years of age and older through monthly telephone surveys. The Illinois BRFSS surveys are conducted for individual counties employing the same procedures and questions as the BRFSS. The information in this report refers to county-level BRFSS data. The most recent county-level data available is from the 2010-2014 round of the survey.

Benchmarks are included whenever possible and come from either Healthy People 2020 (<http://healthypeople.gov/2020/topicsobjectives2020/>) or the County Health Rankings (CHR) National Benchmark (<http://www.countyhealthrankings.org/>). The Healthy People 2020 (HP2020) goals are set every 10 years by the U.S. Department of Health and Human Services. CHR is run by the Robert Wood Johnson Foundation and the University of Wisconsin Population Health Institute. The CHR standards are set at the 90th percentile of the current data; this means the goal is for all counties to be as healthy as the top 10% of counties are now.

County level data from public and proprietary sources (when available) are used; such as but not limited to communicable disease data, patient intake information, survey questionnaires, and others. Not all of these data sources break out data at the city, zip code or census tract levels. In addition, some data sources may not be as current or complete as others.

Community Involvement

The DEM Team was established in April 2013 and initiates during each of the assessment and evaluation phase of the MAPP process to review data collected and summarized. This data was further analyzed and updated by Will County Health Department's Epidemiologist. Members of the data team reviewed, edited and provided additional data for the report. A preliminary community health profile was presented to the Executive Committee for review and additional comments.

Several meetings were held with the DEM Team to review the data in detail, identify gaps or other data sources needed to finalize the report. The CHSA Report summarizes the key findings for the community to assist in developing a community health improvement plan.

Key Findings

The Community Health Status Assessment is a profile of the health of the county at large. Based on the information gathered through this Community Health Status Assessment and the guidelines set forth in Healthy People 2020, the following "areas of opportunity" represent the significant health needs of the community. See appendix for Healthy People 2020 Comparison to Will County Data.

Demographics:

Will County is the 4th most populous county in Illinois. There has been a 2.2% increase in population from 2010 to 2017. Will County is predominantly urban with 96% of the total population living in urban areas. About 25% of the population is non-white. Nearly 12% of the population is foreign born. Of those that speak Spanish in the county, 43% reported speaking English less than well. Roughly 9% of the population has at least one diagnosed disability and 6% are veterans; just shy of half of the current veteran population is over 65 years of age however the largest age group is comprised of those between the ages of 5 and 17. Race in Will County is broken down as follows:

- 74% Caucasian
- 11% African American
- 5% Asian
- .2% American Indian

Socioeconomics

Income, Education, and employment are some of the indicators that effect socioeconomics in an area. The median household income was \$77,507, higher than the state average; however, disparities inter-countywide are shown with Joliet residents exuding some of the lowest incomes in the county. Poverty effects roughly 7.7% of residents of Will County, of which the highest effect among Joliet residents. Just under 10% of residents do not hold a GED or high School diploma. The Hispanic and Latino/Latina communities are affected at the highest rates when comparing access to health insurance, with over 16% reporting no health insurance. Just over 5% of non-Latino individuals are uninsured. Non-Hispanic whites comprise 73% of home loans, and

- 10% of Will County residents receive SNAP benefits
- 14% of overall residents are Medicaid recipients, of which 50% are children
- Roughly 25% of Will County youth are Medicaid recipients
- 341 individuals were deemed unsheltered homeless, of which 32% were children and life expectancy of unsheltered homeless is roughly half of sheltered individuals

- During the pandemic of 2019-2021; many socially vulnerable residents were affected by unemployment and lack of resources to reduce the spread of COVID-19.

Health Resource Availability

Will County healthcare resources include three hospitals, three community health centers, dialysis facilities, nursing homes, behavioral health homes, and outpatient treatment centers. Patients of the local health system were uninsured roughly 22% of the time. Will County is classified as a Healthcare Resource Shortage Area (HRSA), with community need in the areas of primary care, behavioral health, dental health, and vision.

- 6% of community members report using the Emergency Department for services
- 16% of residents lack a Primary Care provider; Primary Care physicians' rate: 1 per every 1800 patients
- Mental Health providers rate: 1 per every 1200 patients
- Dental Health providers rate: 1 per every 1000 patients
- Transportation and cost of service continues to be the largest barriers to accessing providers
- The COVID-19 Pandemic caused unsurmountable barriers to access to healthcare from December of 2019-December of 2020. *population level indicators will be available in future data.

Quality of life

Quality of life can be directly related to social determinants that can effect overall health outcomes and well-being for individuals. The indicators in Will County that reveal quality of life are:

- Life Expectancy; 82 years of age for females, 78 years of age for males
- Access to Food and Nutrition; 32% of overall county has low food access. 34,000 children have food insecurity and 46% do not qualify for assistance.
- 35% of dwellings are considered "substandard" conditions; with 2% being overcrowded primarily in Joliet and Bolingbrook. 6% are vacant
- 4% have no motor vehicle; primarily in the Joliet, Romeoville, and Bolingbrook areas
- 33% of residents lack access to a park within ½ mile from their homes.
- 26% of businesses are minority owned, 35% owned by women
- 62% of residents are registered voters; highest among the 45-54-year-old age category.

Behavioral Risk Factors

Risk factors in this category include behaviors that are believed to be caused or related to injury, disease, and death; these may be exhibited by either adults or adolescents/youth and may contribute to outcomes of morbidity and mortality.

- Substance use has had a large effect on youth and adults in Will County in recent years; with over 100 overdose deaths due to opioids, and tobacco use (35%), marijuana use (26%), and alcohol (45%) use among youth increasing.
- 38% of resident with BMI<25 >30 ; 33% considered obese
- 28% of residents have high blood pressure
- Upwards of 30% surveyed children are spending as many as 5 hours or more in front of a television, computer, phone or smart device screen during the day.

Environmental Health

The environment plays a significant role on the health outcomes of individuals based on given geographic features and conditions. Quality of Air, Water, and Land can have instrumental effects on our safety and physical health. Unintentional workplace, home, or recreational exposures can effect all ages of various organisms and alter morbidity and mortality. Will

County is ranked last, 102 of 102 in the state of Illinois for its “physical environment”. Illinois is a smoke-free state.

- 63% of facilities have adopted smoke-free outdoor policies in public areas
- 47% of waste is recycled
- Boil Orders are frequent for eastern areas of Joliet
- 75% of water systems are fluoridated
- 2.5% of Will County children had elevated blood lead levels
- Des Plaines river, through Will County, has been sampled and positive for (PCB) Polychlorinated biphenyls, Mercury, Arsenic, and Phosphorus

Social and Mental Health

Mental health plays a significant role in well being and physical health. There continues to be shortage in the areas of behavioral health and mental health providers in this region, particularly for those reliant on Medicaid for access to care.

- The Will County suicide rate is 11.2 per every 100,000 (higher than Healthy People 2020 goal of 10.2 per every 100,000)
- Suicide and suicide ideation has increased 3% in the last few years
- Depression has increased among youth by 5% (35%)
- School incidents and hate crime offenses have increased since 2015

Maternal and Child Health

Health indicators of women, infants and children can gage the overall health of a region. Access to Maternal care is correlated with birth outcomes, which can determine the vulnerability of an individual. The infant mortality rate among African American women is increasing and more than double that of their Caucasian counterparts.

- Will County infant mortality rates is 6.7%; higher than the state average
- Mortality rate of African American infants is roughly 14%; 5% for Caucasians in Will County
- 8% of infants are born with low birth weight
- 4% of births were to adolescent mothers
- 31% of African American mothers did not enter prenatal care during first trimester of pregnancy
- 5% of women use tobacco during pregnancy.

Death, Illness, and Injury

Morbidity and mortality in a population can provide details about life, crude or age adjusted rates of disease, death and injury. In Will County, Cancer closely follows heart disease as leading cause of death.

- African American men have double the prostate cancer rates (227 per 100,000) as Caucasian male counterparts (116 per 100,000)
- The rates among diabetes hospitalizations of African American and Hispanic populations are nearly double that of Caucasian counterparts
- 27% of Medicare population in Will County has diabetes
- Stroke mortality is higher in Will County (39 per 100,00) than the Healthy People 2020 guidelines (33.8 per 100,00)
- Lung cancer is the most common form of cancer among men and women (47 per 100,000), higher than Healthy People 2020 guidelines (45 per 100,000) and nearly double that of some neighboring counties.
- Breast cancer rate is higher in Will County (135 per 100,000) than state of Illinois average (131 per 100,000)

- Accidental overdose accounted for the most unnatural deaths, of which most were due to opioids. *The 2019- 2020 COVID-19 pandemic has caused significant increase in overdoses due to opioid use due to lack of access to treatment and recovery programs during state/national isolation and quarantine procedures.

Communicable Disease

Person to person transmission is related to human behavior and how the environment responds as a catalyst to this transmission. Studying communicable or person to person spread diseases, provides public health with the opportunity to prevent and intervene in disease prognosis for the purpose of maintaining and/or improving community level quality of life.

- The annual total of Hepatitis C cases has increased by roughly 43 cases in 2 years.
- The annual total of ICU hospitalizations due to Influenza has increased by nearly double since 2017 from 57 to 94.*Covid and Covid-like-illnesses reported in 2020 will be indicated in future reports.
- Gonorrhea, Syphilis and Chlamydia cases have steadily increased since 2007; Chlamydia has increased from 324 cases in 2011 to 379 cases in 2016. Gonorrhea rates have gone from 55 cases to 75 cases since 2011 and increased 4 times in Syphilis rates from 3 to 12 since 2011.
- The total number of HIV cases has decreased and the total number of living HIV and AIDS cases have increased
- E.Coli case rates are higher in Will County (2.45 per 100,00) than the state average (1.6 per 100,000)
- SARS-COV-2 Virus of the 2020 Coronavirus pandemic has been reported to have caused mortality of more than 400 Will County residents.

Sentinel Events

Cases related to unnecessary or avoidable disease, injury or death are classified as Sentinel.

- Will County drug induced deaths rate has nearly doubled since 2001; from 7 per 100,000 to 20 per 100,000 reported in 2016.
- Firearm mortality has nearly doubled from 2016 (4) to 2017 (7).
- Motor mortality rate is roughly 8.4 per 100,000
- Opioid overdose deaths are highest in the 20-40 year age range; 84% to Caucasians and 70% were male.
- Asthma hospital admission rates are highest among non-Hispanic African Americans and Hispanic and Latino populations
- Will County has been experiencing burden from the Coronavirus pandemic, along with the remainder of the world.

COMMUNITY THEMES AND STRENGTHS ASSESSMENT

The Community Themes and Strengths Survey was disseminated among Will County residents utilizing a social survey platform, Survey Monkey. Sixty-four total questions related to demographics, community engagement, perception of emerging threats, vulnerabilities and discrimination, as well as health care system perceptions related to access to care, food insecurity, and social determinants were asked. The community responded by the thousands, as there was a total of sixteen hundred eighty eight total responses gathered, with 96% of all reach targeting Will County resident. The data represents a two percent margin of error at a 95% confidence interval and the reach was approximately a .25% response rate. The reach was ubiquitous with social platforms such as Facebook, Twitter, Snapchat, web domain, QR codes, and web-based applications to reach resident participants, in person interviews and events were hosted during peak patient times at local health care organizations to discuss the survey and educate residents of the importance of providing input on a community-based notice and comment opportunity within their integrated public health system

- Many respondents were between the ages of 34 and 54 years, roughly 31 percent of total participants.
- 79 percent were female
- 87 percent Caucasian
- 92 percent non-Hispanic, 96 percent speak English as primary language
- 77 percent were married
- 92 percent had a minimum of some college
- 85 percent of all respondents lived in Will County for over six years
- 40 percent of all participants had 2 children with only 11 percent responding that they had 4 or more dependents living within the home.
- 89 percent of all respondents indicated that they owned their own homes
- 97 percent own a smart phone or tablet

Quality of life questions were asked to residents.

- Respondents rated quality of life within the county as good or better 83 percent of the time.
- 81 percent of the time respondents rated Will County as a good or better place to raise their children in.
- 85 percent of residents stated that they have enough money most of the time or more
- 87 percent of residents stated that they have access to health care services most of the time or more.
- 49 percent of residents felt that this was a place that most of the time or more individuals worked together to solve issues
- 61 percent of the time felt that this county was a good place to grow old most of the time or more. Discrimination was ranked among places and number of occurrences
- 17 percent of residents perceiving that discriminations was occurring 3 or more times on the streets and 16 percent stating that discrimination occurred 3 or more times at the place of work and 13 percent occurring at school 3 or more times.
- Transportation was declared as an issue with 30 percent perceiving there to be rarely or never access to transportation within the local communities
- Substance abuse was rated as a top issue among respondents, with 67 percent stating it to be somewhat or large problem within the county.

Residents were asked to rank perception of public health threats on a scale from 1 to 10 as it related to “Within the Home”, “Within the Community”, “Within the County”; the following are the responses:

Within the Home	Within the Community	Within the County
#1. Access to Public Transportation	#1. Illegal Drug Use	#1. Illegal Drug Use
#2. Depression	#2. Vaping	#2. Prescription Drug Use
#3. Access to Interpreters	#3. Underage Drinking	#3. Violence
#4. Mental Health	#4. Tobacco Use	#4. Underage Drinking
#5. Tobacco Use	#5. Mental Health	#5. Vaping
#6. Vaping	#6. Depression	#6. Tobacco Use
#7. Alzheimer’s/Dementia	#7. Binge Drinking	#7. Mental Health
#8. Binge Drinking	#8. Prescription Drug Use	#8. Depression
#9. Suicide	#9. Suicide	#9. Binge Drinking
#10. Self-Harm	#10. Alzheimer’s/Dementia	#10. Self Harm

Access to Health Care

Health care service access was rated among the top themes of concern for Will County residents. The majority of the respondents seek care from a private practice professional, such as a private dentist (95%), mental health provider (46%), or medical doctor (85%). Forty-eight percent of individuals stated that they seek immediate care attention, while only 5 percent claim to be utilizing free or federally qualified health centers. Of the participants, 83 percent have employer-based health care insurance, ten percent are self-pay insured, 10 percent are Medicare insured, 5 percent have Medicaid, 5 percent pay cash out of pocket, and 1.5 percent have veteran’s assistive insurance.

- Employer based 83%
- Self-Pay Insurance 10%
- Medicare 10%
- Medicaid 5%
- Cash out of Pocket 5%
- VA Insurance 1.5%

Access to Public Transportation

Access to transportation remains a top concern for individuals of Will County

- Over 27% of residents stated that Access to transportation was a major issue within the community and within the county.

Behavioral Health

Mental health disorders are among the most common causes of disability. Mental health disorders attributed to 7.8% (5,783) of Will County hospitalizations in 2014, and it is the third leading cause of all hospitalizations.

- Illegal Drug Use debuts as a top concern among the community and the county with 67 percent of participants stating it as, the primary, “somewhat or large problem”.
- Prescription drug use within the county and illegal drug use among the community follow closely behind at just under 50 percent.
- Depression remains a top concern “within the home”, following just after access to public transportation, with nearly 20 percent of respondent rankings, while individuals rate vaping and mental health following.

Access to Housing

Affordable housing is a social determinant of health due to the nature of conditions and exposures related to being unsheltered. Cost of housing, cost of property, tax considerations, referendums, energy and material usage and many more factors can affect an individual or family’s ability to house themselves. Two emergency shelters exist in Will County, Daybreak run through Catholic Charities Diocese of Joliet, and Morning Star Mission of Joliet but many need hot meals and warm shelters.

- Nearly 10% of residents rank access to affordable housing in Will County as something they rarely or never experience
- 6% of senior citizens stated having rarely or never accessing affordable housing; Will County currently has no Section 202 housing units.

FORCES OF CHANGE ASSESSMENT

The Forces of Change Assessment (FOCA) elicited broad community input to identify forces of change impacting the local public health system in Will County. Participants reported on current trends, events, and factors that may have implications on the local public health system and quality of life for Will County residents. FOCA participants also addressed threats and opportunities posed by each of the major forces. The issues and opportunities mentioned above will inform future strategic planning in Will County to improve the health and overall quality of life of Will County residents. The FOCA and other MAPP assessments are key in identifying and prioritizing health issues in Will County.

An analysis of the forces reported by MAPP Partners and community members throughout the FOCA process produced ten cross-cutting issues, listed below.

- Access to transportation
- Access/affordability of healthy foods
- Access/affordability of housing
- Air and water quality
- Behavioral health/substance abuse
- Equitable and quality health care
- Funding for social service agencies
- Political climate
- Unemployment/underemployment
- Use and influence of technology/social media

When asked to rank the top three forces with the most impact, survey participants ranked

- (1) Economic Forces
- (2) Political Forces
- (3) Social Forces as key issues in Will County

The following themes of opportunities were identified for each force:

- Increase advocacy • Increase partnership/coordination
- Increase education
- Increase jobs/employment opportunities

Force of Change Opportunities Identified

- Access to transportation
- Improve partnerships with transportation agencies
- Increase advocacy and funding to expand transportation options
- Access/affordability of healthy foods
- Increase awareness of resources to access healthy food options
- Encourage healthy food options in workplaces
- Access/affordability of housing
- Increase advocacy for affordable housing options
- Improve air and water quality standards
- Increase advocacy for Behavioral health/substance abuse
- Increase advocacy and funding to expand treatment facilities and providers

- Increase coordination of care with existing Will County agencies
- Improve community perception and decrease stigma of behavioral health services

Force of Change	Opportunities Identified
Access to transportation	<ul style="list-style-type: none"> • Improve partnerships with transportation agencies • Increase advocacy and funding to expand transportation options
Access/affordability of healthy foods	<ul style="list-style-type: none"> • Increase awareness of resources to access healthy food options • Encourage healthy food options in workplaces
Access/affordability of housing	<ul style="list-style-type: none"> • Increase advocacy for affordable housing options
Air and water quality	<ul style="list-style-type: none"> • Increase advocacy to improve air and water quality standards
Behavioral health/substance abuse	<ul style="list-style-type: none"> • Increase advocacy and funding to expand treatment facilities and providers • Increase coordination of care with existing Will County agencies • Improve community perception and decrease stigma of behavioral health services
Equitable and quality health care	<ul style="list-style-type: none"> • Increase advocacy and funding for more equitable and quality health care services • Increase collaborations with community agencies such as schools to reach youth and other target populations
Funding for social service agencies	<ul style="list-style-type: none"> • Increase advocacy for stable state funding • Increase awareness and education of public health issues to elected officials
Political climate	<ul style="list-style-type: none"> • Increase advocacy efforts and support for vulnerable and minority populations • Increase awareness and education of public health issues to elected officials • Encourage bipartisanship over issues regarding social determinants of health and other public health issues
Unemployment/underemployment	<ul style="list-style-type: none"> • Encourage businesses to bring employment opportunities to Will County • Increase advocacy for fair wages
Use and influence of technology/social media	<ul style="list-style-type: none"> • Improve technology access and education for the senior population • Expand telehealth opportunities

LOCAL PUBLIC HEALTH SYSTEM ASSESSMENT

The Local Public Health System Assessment survey was designed in 2019 to collect data from our local public health stakeholders, policy makers, health professionals and collaboratives to address essential public health service needs and gaps that may exist within the existing public health structure. The survey used on-line data collection. A Survey Monkey questionnaire was distributed to a list of community members and partners who are part of the local public health system in Will County. Sixty-six total participants responded to questions related to strengths and activities associated with essential public health service frameworks. This survey closed as of May 2019. In an analysis of the local public health system, stakeholders were asked to rank, from No Activity to Optimal Activity, their and/or their organizations involvement in sectors related to innovation, technological advancements, addressing inequities, and surveillance as it related to personal health service exposures. Participants were individuals whom held roles mainly linking individuals to services, educating and informing the public about available public health services. Frameworks associated as follows:

- EPHS1: Monitoring Health Status
- EPHS2: Diagnoses and Investigating Needs
- EPHS3: Educate and Empower
- EPHS4: Mobilize Partnerships
- EPHS5: Develop Policies/plans
- EPHS6: Enforce Laws
- EPHS7: Link to Health Services
- EPHS8: Assure Workforce
- EPHS9: Evaluate Services
- EPH10: Research/Innovate Strengths

Sixty-six responses were collected during the duration of the survey. The deadline to complete this survey was May 29, 2019. Survey results were analyzed by the Data, Monitoring and Evaluation (DEM) team. A draft Local Public Health System Assessment was presented to the MAPP Executive Committee for review and approval on July 17, 2019.

List of Participating Agencies
AAA
Agape Missions, NFP
AMITA Health
Cornerstone Services
Easterseals Joliet Region Inc.
Edward Elmhurst Health
Hines VA
Joliet Park District
Lewis University
New Lenox Fire Department
Senior Services of Will County
Silver Cross Hospital
Stepping Stones
Symetria Recovery
WELLPATH
Will County Board
Will County Health Department
Will County Center for Community Concerns
Will County Community Health Clinic
Will County Executive Office
Will-Grundy Medical Clinic
Wilmington Coalition for a Healthy Community

Strengths		Weaknesses	
EPHS 6: Enforce Laws	EPHS 9: Evaluate Services	EPHS 7: Link Services	EPHS 8: Assuring Workforce
Opportunities		Threats	
Enforce Laws and create policies that are comprehensive to the goals and objectives created by the health care system	Support collaborative research that is inclusive to the equity development of the community	Community insecurities with the goals and objectives of the health system	Workforce Development inclusive of the diversity of the community
Engaging the community in policy and regulation design	Utilize more robust and ubiquitous social platforms	Community may have challenges obtaining services due to social determinants	Integrating the necessary Technologies and Resources required to maintain a standard of service
Mobilize the health care system to assess and report on cross cutting public health issues	Monitor and Surveillance inequities, emerging threats and respond with adequate and efficient information to the vulnerable populations	Collaborating and aligning adequate training for workforce to support health service linkage	

A

SWOT analysis is depicted above related to the essential public health services and the responses from the survey. The Threats and Opportunities mentioned above will enhance future strategic planning in Will County to improve the health and overall quality of life for Will County residents.

Essential Public Health Services Yield:

Optimal Activity established from the survey stemmed from EPHS framework 6; most organizations that participated felt that their activity related to enforcement and regulation of laws and policies was optimal.

No Activity was attributed to EPHS framework 8, Assuring a complete and competent workforce.

Equity measured most optimally within the framework:

- Inclusive Policy
- Inclusive Partnerships

Equity measured least activity or no activity within the framework:

- Developing a leadership workforce representative of community

Equity Survey Questions
Q23 Monitor Equity via Assessments
Q48 Inform, Educate, Empower regarding Social Determinants of Health
Q19 Inclusive Community Partnerships
Q26 Participate in Policy Development
Q30 Impact of Disproportionate and Marginalized Communities
Q41 Evaluate Equitable Access to Health Services
Q38 Public Leader Development
Q49 Identify and Report on Health Equity through Surveillance

STRATEGIC PLANNING & PRIORITIZATION

Phase 4

On September 13th of 2019, 40 Will County public health stakeholders participated in a three hour meeting at AMITA Health Saint Joseph Medical Center to review key findings from the four MAPP assessments, identify cross-cutting themes and potential strategic issues, and to prioritize a set of strategic issues. The meeting was facilitated by the MAPP Coordinator, Program Manager Community Planning and a representative from Kankakee Health Department. MAPP Executive Committee members were asked to use a Prioritization Criteria and Planning Worksheet during the discussion of the previously identified strategic issues. A focus on Social Determinants of Health as it relates to the Community of Wellness will be the theme embarking on 2020.

Following the discussion of assessment findings and updates on previous Community Health Implementation Plan priorities, participants individually reflected on the top strategic issues by using a worksheet provided, using Hanlon method ranking of up to five top strategic issues for Will County. Individuals then participated in a voting poll based on their numerical rankings to determine if the prior strategic issues were still reflective of the current community needs. Individuals voted in large, that Behavioral Health and Substance Use, Access to Healthy Food and Nutrition, Access to Health Care, and Stabilizing the Built Environment to be of top priorities. Individual reflections were discussed in small groups to build a consensus around the top goals and objectives for each of these categories using a set of defined prioritization criteria. See Figure below for Prioritization Process.

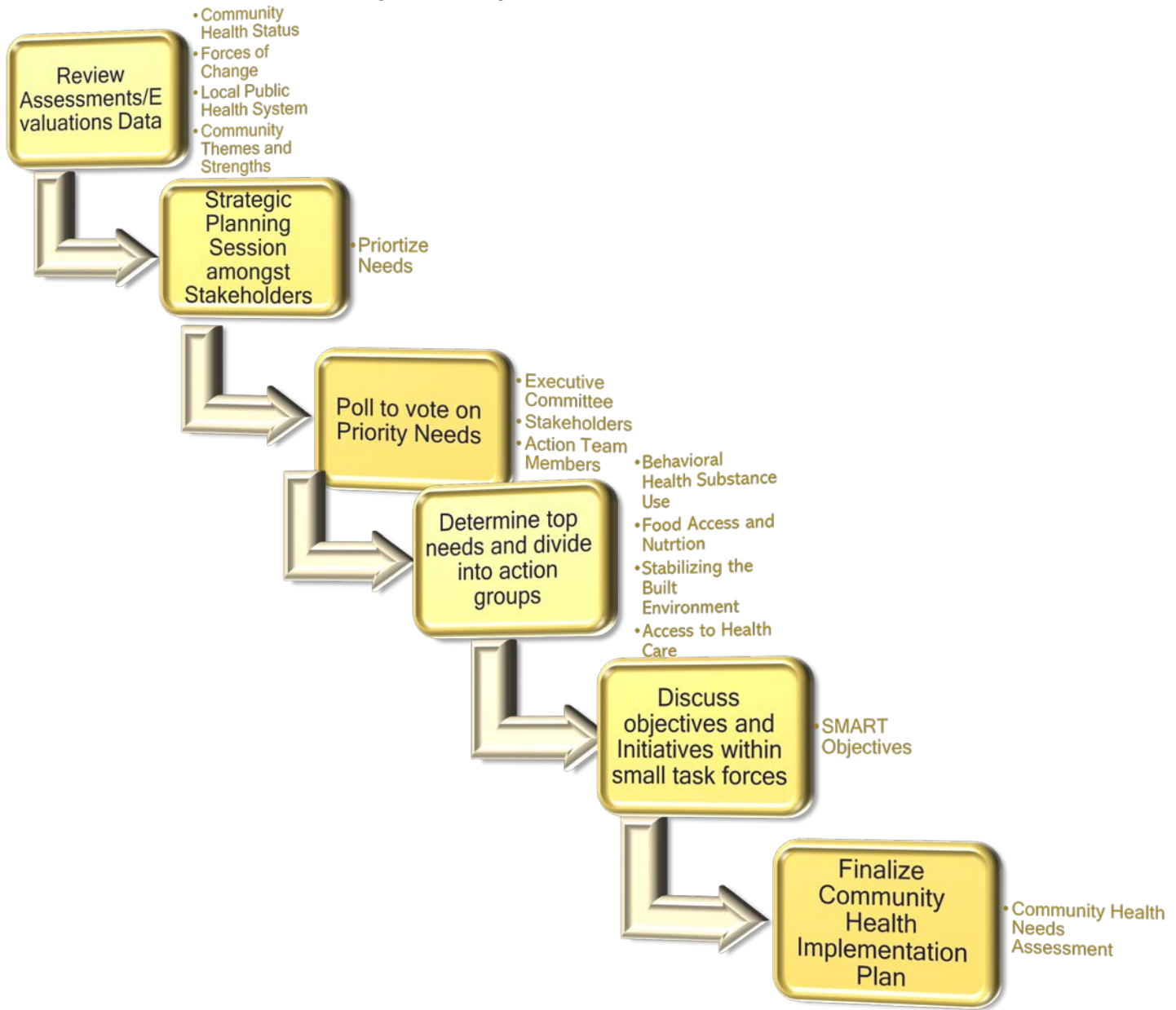
Each group shared their recommendations and rationale based on evidence presented during strategic data sharing, the four strategic issues determined were: Behavioral Health and Substance Use, Access to Health Care, Access to Food and Nutrition, and Stabilizing the Built Environment.

The discussion yielded many issues that stem from social determinations that can put adversity on health outcome for residents; Issues were including but not limited to

Transportation Access

- Interpreter/Language Translation Access
- Behavioral Health
- Substance Use
- Housing Stabilization
- Food Access
- Nutrition/Wellness
- Access to Health Care

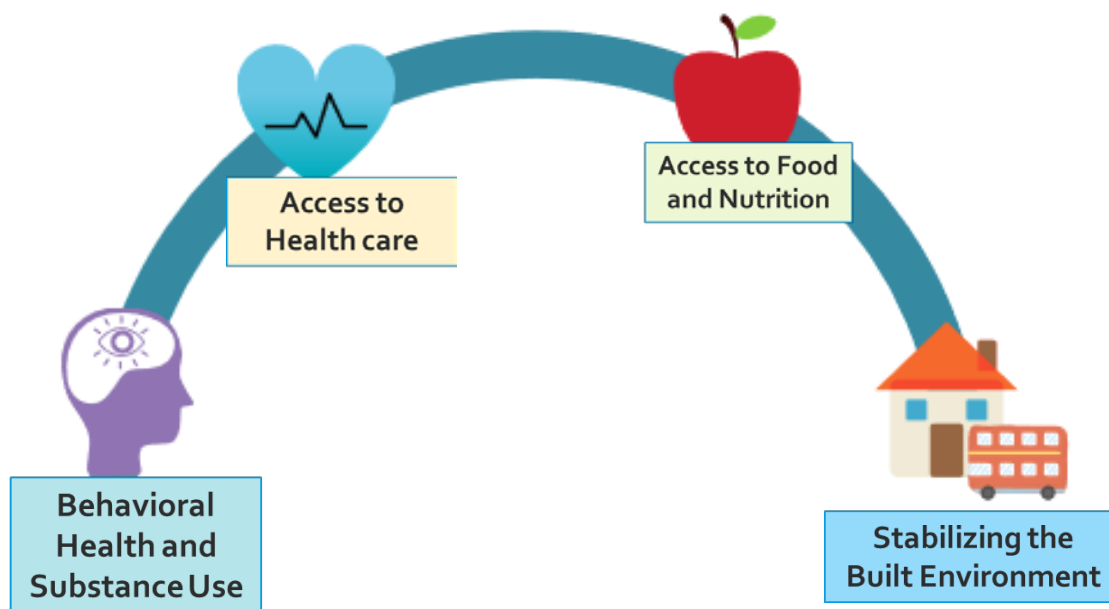
: Process for Prioritization of Strategic Planning



Strategic Planning respondents indicated that creating a Community of Wellness as it relates to Social Determinants of Health should be an overarching theme, goal, or vision that is embedded into all other priorities. Integration of Wellness will remain a theme, providing goals and objectives specific to the inclusion of wellness into each of the four priority task forces; incorporating such things as wellness policy integration into the workforce, mental health policy, and engagements that prioritizing wellness within cross sector organizations of the local health system. MAPP Executive Committee members and action team committee members decided that behavioral health, access to health care, behavioral health and substance use, stabilizing the built environment, and access to food and nutrition would be the priority focus for the next three years.

Priorities	Number of Votes
Access to Health Care	23
Access to Food and Nutrition	20
Behavioral Health and Substance Use	24
Stabilizing the Built Environment	17

Community Needs and Social Determinants



COMMUNITY HEALTH PLAN

Phase 5

Phase five of the MAPP process is to formulate goals and strategies for the strategic plan. This phase helps the community align the work of the action teams with the vision. It also allows the goals of community organizations to be aligned, bringing about a more cohesive public health system.

Following the development of the strategic framework, Action team chairs and the MAPP Coordinator presented the data to the cross sector of participants and community representatives. Using a ranking strategy, such as Hanlon method, participants ranked the health dilemmas in the Conference Worksheet provided. Focus groups were held with community members and MAPP partners to gather information for developing goals and strategies. Information gathered included what was currently being done in the county to address the needs, gaps in services, resources available and resources needed and the available evidence based data provided at the population level. Focus group participants were also asked for suggestions on strategies to address each priority.

In addition to information gathered from the focus groups, the current goals and strategies, as well as action team initiatives, were reviewed by the Executive Committee. Strategic issue questions and goals were slightly modified. A list of current and suggested strategies was presented to the Executive Committee. Conference participants participated as a whole in a nominal voting process to select the final top ranked adopted health issues and strategies.

Process

After the Executive Committee provided the strategic issues framework, MAPP core staff conducted a strategic planning session at the MAPP Fall Forum in September of 2019; 44 participants representing 33 organizations, attended to strategically determine prioritized community needs and vote. The meeting was facilitated by a Kankakee Health Department representative to reduce any bias of prioritization based on the presentation of data from the evaluation and assessment process.

The purpose of the strategic planning meeting groups were to:

1. Identify work currently being done and by whom.
2. Identify available and needed resources to address the strategic issues.
3. Identify barriers to addressing the strategic issue.
4. Brainstorm strategies to provide feedback to the Executive Committee.

An invitation was sent, via the Constant Contact mailing list, to MAPP Action Team members and community partners to participate in the 2019 MAPP Fall Forum at AMITA Health St. Joseph Medical Center in Joliet in September 2019. In each session, an overview of the MAPP process and the strategic issues framework was provided. Numerical ranking was used to determine prioritized areas of need.

Additional questions considered:

1. What is the potential impact on the strategic goal?
2. What is the cost of this strategy in terms of dollars, people and time?
3. Is it likely that the strategy can be successfully implemented?

A survey poll was used at the time of the conference via Polling, to select strategies for adoption. The results of the survey were presented at the October 2019 Executive Committee meeting.

Community Involvement

Community involvement for this phase included the Executive Committee, MAPP Action Team members and community partners. MAPP core staff held focus groups to gather input from the Action Team members and community partners, providing feedback to the Executive Committee on suggested goals and strategies. The strategic planning session was facilitated by the Kankakee Health Department as a non-bias representative to monitor 44 participants, representing 33 organizations.

Summary of Results

Goals and strategies from the current plan were reviewed along with the current Action Team initiatives. Following the strategic prioritization discussion, Action team chairs were brought together for a meeting to discuss impactful objectives and activities for these teams. A draft of the goals and strategies was sent out to the Executive Committee. Executive Committee members were asked to review and select strategies if they met the criteria. Action Chairs from each team present at one executive committee meeting to discuss their goals and activities with the group at large and receive feedback yearly.

Community Health Needs Assessment Report

A community health needs assessment report is devised based on the strategic prioritizing that the MAPP collaborative provides on the overarching community needs chosen to address in the coming MAPP iteration. The report was completed and approved by the MAPP Executive Committee on January 23rd, 2020. The local health system and local MAPP Collaborative Partnerships, with Silver Cross Hospital, Edward-Elmhurst Hospital, and AMITA Hospitals in Bolingbrook and Joliet, work together to meet collaborative evaluation and surveillance needs and also to work collaboratives to fund and impact major social and health related issues in the community. These reports and other information is available on the MAPP Collaborative website.

The following goals and strategies, in no order, were adopted by the Will County MAPP Collaborative Executive Committee in October 2019.

Issue #1 -Access to Health Care

Strategic Issue

How can the Will County community collaborate to maximize and expand resources that will increase access to and awareness of primary, behavioral, dental, vision and specialty health care that is affordable, geographically accessible and culturally sensitive?

Goals

1. Will County residents will appropriately use their primary care providers and medical homes.
2. Health care providers will provide inclusive and culturally sensitive services to persons of all backgrounds and abilities.
3. The number of Will County Medicaid patients that find “Medical Homes” will increase.

Strategies

- Support advocacy efforts for increased rates for Medicaid providers.
- Collaboratively work with the local Federally Qualified Health Centers to promote medical home model.
- Support advocacy efforts for more specialty care providers to accept Medicaid.

- Collaboratively work with Aunt Martha's, VNA Health Care, Will Grundy Medical Clinic, Easter Seals (Joliet Region) Inclusive Health Coalition (IHC), and others to provide support services and link medical homes for underserved individuals.
- Explore better linkages of residents to medical homes.
- Work collaboratively with the County of Will for accessible transportation.
- Expand the use of technical assistance with GIS informatics to link and coordinate care for Will County residents; (I.e. "Know Where to GO" and "MAPP Collaborative" Websites and social Media)

Issue # 2 - Behavioral Health and Substance Use

Strategic Issue

How can the public health community coordinate and enhance Will County's ability to provide access to behavioral health and substance use disorder services?

Goals

1. Persons with behavioral health issues will receive culturally competent and age appropriate services.
2. The stigma related to behavioral health and substance use disorders will be reduced.
3. Will County residents and behavioral health coalitions will be well informed on advocacy and legislative issues relating to behavioral health.

Strategies

- Continue the Anti-Stigma Social Media Campaign
- Continue to promote Mental Health First Aid.
- Work collaboratively to support advocacy efforts of existing behavioral health and substance abuse coalitions and organizations.
- Increase number of MAT and Substance Use programs available for Will County residents; primarily Medicaid recipients
- Work with Federally Qualified Health Centers to address behavioral health needs of Medicaid and uninsured populations.
- Capacity building and coordination of services among providers.
- Increase number of Narcan Trainings, Narcan Policies and Narcan available in Will County; for worksites, institutions, and for target populations.
- Work to educate worksites, institutions and will county residents of mental health disorders, signs and symptoms, and improve access to care through GIS maps and technical assistance; (i.e. "Know Where to GO" and "MAPP Collaborative" websites and social media pages)
- Provide Will County worksites with worksite toolkits to incorporate mental health policies on site to improve productivity and improve wellness of employees.
- Evaluate facilities for wellness outcomes through the "WeWILL Work Healthy Worksite Application" process
- Award worksites at Will County First Annual "Community of Wellness" Conference, to be hosted in the first year of the new MAPP Cycle of each MAPP Cycle.

Issue # 3 - Access to Food and Nutrition

Strategic Issue

How can the public health community work together to decrease food insecurity in Will County?

Goals

1. Increase awareness of need for local grocers and retailers of produce and nutritional food items in local food deserts
2. Improve access to Nutritional food items at local food pantries for those that have comorbidities of both chronic health conditions and food insecurity
3. Increase access to food for all food insecure residents of Will County

Strategies:

- Continue to update the Food Access GIS Maps
- Develop a shorter easy to remember link for the maps
- Promote Food Access maps
- Coordinate and evaluate mobile pantries in communities of need
- Determine locations for new mobile pantries
- Secure mobile pantry sponsors
- Develop a mobile pantry checklist
- Schedule volunteers and logistics for mobiles
- Track mobile pantry data
- Work with corporate sponsors to fund the cost of Will County mobiles pantries
- Promote mobile food pantries (social media, schools, businesses, housing, senior populations, press release, websites, etc.)
- Promote awareness of Micro Pantry location
- Increase the number of micro pantries and donations to Guardian Group for healthy food (fruit, veggies, meats, whole grains, etc.)
- Increase the number of organizations screening for food insecurity
- Promotion of screening tool
- Linkage to Rx Mobiles
- Education on food resources (map flyer, find food flyer, etc.)
- Develop a Screening Commitment form for organizations
- Link food insecure people to proper resources for food (WIC, SNAP, Pantries, Mobiles, Micros, map flyer, find food flyer, etc.)
- Increase healthy food education opportunities
- Provide healthy recipes and meal suggestions with food provided at mobiles, micros and in food pantries (provide recipe cards for food being distributed)
- Determine and implement strategies to address physical barriers to get food home from pantries and mobiles and to cook the food (microwave cooking recipes, access to pans, crockpots, etc.)
- Increase healthy food choices by expanding community gardens throughout Will County (research DeKalb County community garden project)
- Advocate for a grocery store in the 60433 zip code
- Coordinate and facilitate collaboration of existing community health promotion (wellness) education programs.
- Expand the use of technical assistance with GIS informatics to link and coordinate food resources for Will County residents (I.e. www.willcounty/findfood,
- Market and disseminate community resources on nutrition and food resource programs.
- Work collaboratively with Inclusive Health Coalition.
- Coordinate with community gardens in targeted communities (food deserts).

Issue #4 Stabilizing the Built Environment **(Ground Zero Action Team for Will County)*

Strategic Issue

How can the Will County community and agencies collaborate to assist residents of Will County that are housing and transportation insecure?

Goals

1. Collect and Disseminate population level data related to social determinants of health among housing and insecure populations of Will County
2. Improve health care coordination for housing insecure and transportation insecure residents of Will County
3. Stabilize and Expand existing emergency shelters within Will County

Strategies

- Implement a Referral System and Sharing Network
- Develop a MOU and process of population level inter-agency HIPAA compliant data sharing.
- Develop a standardized report for target population data
- Share report with Cross-sector organizations
- Develop screening tool for target population, HIPAA compliant.
- Utilize Microsoft teams to share data with cross sector organizations.
- Develop a GIS MAP to indicate health and social services from Biking and Walking paths

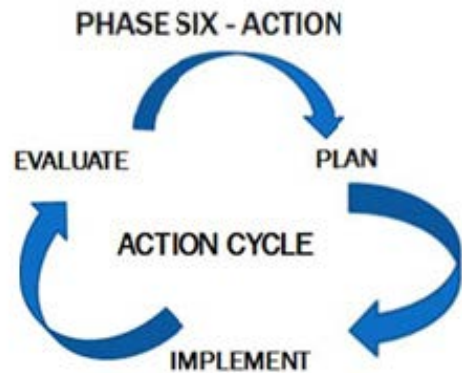
ACTION & IMPLEMENTATION

Phase 6

The Will County Community Health Improvement Plan identifies the four prioritized community health needs and the four action teams that will address these needs over the course of three years. The following teams were devised to address community needs in Will County:

- **Action Team: Access to Food and Nutrition**
- **Action Team: Access to Healthcare**
- **Action Team: Behavioral Health and Substance Use**
- **Action Team: Stabilizing the Built Environment**

The MAPP Action Chairs are volunteer agents of healthcare, education, public health and other cross sector organizations that guide the framework for each of the action teams. Monthly meetings are hosted as a working group to focus on implementation of activity that will lead to impactful change. Objectives and Implementations plans are reviewed and approved by the Executive Committee. December of 2019 began the implementation on the fourth iteration of MAPP evaluation and action in Will County.



Logical Models were devised with Action Chair and Executive Committee review and approval during virtual meetings and virtual communications among the teams and executive committee due to the COVID-19 pandemic during 2020.

Community Involvement

Community members are an integral part of the action teams as committee members and general members of the MAPP Collaborative. Community members are highly involved in the assessment phase and the strategic prioritization process in which they attend conferences and sessions that involve prioritizing community needs, sharing perceptions, attitudes and knowledge, utilizing community health profile data, and being a voice for those within the community to share the public health message. These individuals are crucial to maintaining the interventions that are most critical and beneficial to those that rely on them.

Action Team: Access to Food and Nutrition

<p>Health Problem: High percentage of Will County residents lacking access to nutritional food options, are food insecure and ineligible for assistance</p>	<p>Outcome Objective:</p> <ul style="list-style-type: none"> • By December 31, 2023, decrease the percent of Will County residents with low to no food access in Will County to 25%. <p>2010 Baseline Data: 45.21% WC; 20.44% IL; 23.61% US (2010, US Dept. of Agriculture, Economic Research Service, USDA)</p>
--	---

	<p>2015 Data: 40.83% WC; 19.36% IL; 22.43% US (2015, US Dept. of Agriculture, Economic Research Service, USDA)</p>
<p>Risk Factors:</p> <ul style="list-style-type: none"> • Limited motor vehicle access • Limited grocer/produce access • Limited or reduced eligibility for assistance • Limited access to employment and other resources • Increased risk of cardiovascular and chronic conditions that promote poor health outcomes 	<p>Impact:</p> <ul style="list-style-type: none"> • Grocery Store Access By December 31, 2023, increase the rate of grocery establishments to a rate of 20 per 100,000. 2014 Baseline Data: 15.05 WC (IL 21.8; US 21.1) 2016 Data: 17.8 WC (28.1 IL; 29.9 US) Source: 2016, US Census Bureau, County Business Patterns • Low Income and Low Food Access By December 31, 2023, decrease the percentage of low income population that has low access to food to 5% Baseline: 6.85% (IL 4.56%; US 6.27%) Source: 2010, US Dept. of Agriculture, Economic Research Service, USDA - Food Access Research Atlas • Food Insecurity By December 31, 2023, decrease the percentage of the population that is food insecure and ineligible for assistance to 35% Baseline: 47% total population ineligible (IL 32%, US 29%); 46% children ineligible (IL and US 31%) Source: 2013, Feeding America
<p>Contributing Factors (Direct or Indirect)</p> <ul style="list-style-type: none"> • Unemployment rates • Education rates • Access to transportation • Access to nutritional food options nearby • Access and eligible for needed resources • “Know where to go” to obtain resources • Health outcomes for those that are socially vulnerable 	<p>Intervention Strategies:</p> <ul style="list-style-type: none"> • Continue to update the Food Access GIS Maps • Develop a shorter easy to remember link for the maps • Promote Food Access maps • Coordinate and evaluate mobile pantries in communities of need • Determine locations for new mobile pantries • Secure mobile pantry sponsors • Develop a mobile pantry checklist • Schedule volunteers and logistics for mobiles • Track mobile pantry data • Work with corporate sponsors to fund the cost of Will County mobile pantries

- Promote mobile food pantries (social media, schools, businesses, housing, senior populations, press release, websites, etc.)
- Promote awareness of Micro Pantry location
- Increase the number of micro pantries and donations to Guardian Group for healthy food (fruit, veggies, meats, whole grains, etc.)
- Increase the number of organizations screening for food insecurity
 - Promotion of screening tool
 - Linkage to Rx Mobiles
 - Education on food resources (map flyer, find food flyer, etc.)
 - Develop a Screening Commitment form for organizations
 - Link food insecure people to proper resources for food (WIC, SNAP, Pantries, Mobiles, Micros, map flyer, find food flyer, etc.)
 - Increase healthy food education opportunities
 - Provide healthy recipes and meal suggestions with food provided at mobiles, micros and in food pantries (provide recipe cards for food being distributed)
 - Determine and implement strategies to address physical barriers to get food home from pantries and mobiles and to cook the food (microwave cooking recipes, access to pans, crockpots, etc.)
 - Increase healthy food choices by expanding community gardens throughout Will County (research DeKalb County community garden project)
 - Advocate for a grocery store in the 60433-zip code
 - Coordinate and facilitate collaboration of existing community health promotion (wellness) education programs.
 - Expand the use of technical assistance with GIS informatics to link and coordinate food resources

	<p>for Will County residents (i.e. www.willcounty/findfood),</p> <ul style="list-style-type: none"> • Market and disseminate community resources on nutrition and food resource programs. • Work collaboratively with Inclusive Health Coalition. • Coordinate with community gardens in targeted communities (food deserts).
<p>Resources:</p> <ul style="list-style-type: none"> • The Guardian Group of Will County • Grocers/Farmers for Local and Sustainable frameworks • The Northern Illinois Food Bank • The Morning Star Mission • Catholic Charities DayBreak • Crisis Line of Will-Grundy Counties • Faith-based Organizations • Hospitals • Will County MAPP Collaborative 	<p>Barriers:</p> <ul style="list-style-type: none"> • Need for additional grocer and retail food providers • Need for policy to shape zoning for grocers and producers (locally sustainable) • Resources for uninsured population • Social stigma • Resources not equally accessible in all parts of the county • Language barriers • Transportation barriers • Cost of food and nutritional food options

Action Team: Access to Health Care

<p>Health Problem:</p> <p>Will County residents in need of medical homes and coordinated health care to improve adherence to preventative and maintenance care.</p>	<p>Outcome Objective:</p> <ul style="list-style-type: none"> • By Oct 2022 increase percentage of adults living in 60433, 60432 who have a source of primary medical care by 2.5%. • By Oct 2022 increase the number of individuals enrolled in health care benefits from 60433, 60432 through local health system by .5%
<p>Risk Factors:</p> <ul style="list-style-type: none"> • Limited access to vehicle/transportation • Limited availability of emergency shelters and affordable housing units • Limited access to health care facilities and providers • 	<p>Impact Objectives:</p> <ul style="list-style-type: none"> • Improve and increase access to dental, primary and behavioral health services for Will County residents • Decrease those target population residents utilizing Emergency Rooms for primary related care • Increase those target population residents with “Medical Homes”
<p>Contributing Factors (Direct or Indirect)</p>	<p>Intervention Strategies:</p>

<ul style="list-style-type: none"> • Availability and access to health care providers • Cost of healthcare • Availability to access health care insurance • Mistrust, inconvenience or invincibility perceptions • Lack of knowledge of services available in the community • Family history 	<ul style="list-style-type: none"> • Support advocacy efforts for increased rates for Medicaid providers. • Collaboratively work with the local Federally Qualified Health Centers to promote medical home model. • Support advocacy efforts for more specialty care providers to accept Medicaid. • Collaboratively work with Aunt Martha's, VNA Health Care, Will Grundy Medical Clinic, Easter Seals (Joliet Region) Inclusive Health Coalition (IHC), Will County Community Health Center and others to provide support services and link medical homes for underserved individuals. • Explore better linkages of residents to medical homes. • Work collaboratively with the County of Will for accessible transportation. • Expand the use of technical assistance with GIS informatics to link and coordinate care for Will County residents; (I.e. "Know Where to GO" and "MAPP Collaborative" Websites and social Media) • Hold First Annual Community of Wellness conference for Will County • Collaboratively work with Spanish Community Center to improve health literacy in the Hispanic/LatinX communities.
<p>Resources:</p> <ul style="list-style-type: none"> • Will County Community Health Center • VNA Health Care • Aunt Martha's Health Care • Hospitals • Will Grundy Medical Clinic • Catholic Charities • Will County Health Department • Health Care providers; Physicians, Nurse practitioners, Specialty care, etc. • Faith-based Organizations • Hospitals • Behavioral Health Providers • Will County MAPP Collaborative 	<p>Barriers:</p> <ul style="list-style-type: none"> • Need for additional physicians and primary care providers • Transportation access • Need to access specialty providers • Know where to go for services or to obtain information to services • Need for additional behavioral health providers • Resources for uninsured population • Social stigma • Resources not equally accessible in all parts of the county • Language barriers

Action Team: Behavioral Health and Substance Use

<p>Health Problem:</p> <p>Will County residents have limited access to behavioral health and substance use programs and treatment, high rates of opioid overdose deaths, and limited education related to substance use and mental health disorders in the home, institutions and worksites.</p>	<p>Outcome Objective:</p> <ul style="list-style-type: none"> • Increase behavioral health and substance use awareness for residents through Will County Worksites target by .5% • Increase behavioral health and substance use awareness for Will County residents “in the home/Built Setting” by .5%
<p>Risk Factors:</p> <ul style="list-style-type: none"> • Substance mis-use • Mental illness • Education related to substance use disorders and mental health disorders • Limited access to transportation • Limited mental health providers that accept Medicaid in Will County • Limited access to behavioral health services • High rates of uninsured • High rates of mental illness, undiagnosed and untreated within the county. • Lack of mental health policy and frameworks in will county institutions and worksites. • Stigma associated with mental health and treatment 	<p>Impact :</p> <ul style="list-style-type: none"> • Improve access to Behavioral Health Medical Homes • Improve awareness of youth and adult mental health and behavioral health needs • Increase access to MAT and Mental Health First Aid for all Will County residents • Increase behavioral health and wellness initiatives for Will County residents through Will County worksites • Increase number of facilities with Narcan policies • Reduce the number of opioid related overdose deaths
<p>Contributing Factors (Direct or Indirect)</p> <ul style="list-style-type: none"> • Availability and access to counseling and screening programs for substance abuse • Age of first use of drugs • Lack of knowledge of services available in the community • Family history 	<p>Intervention Strategies:</p> <ul style="list-style-type: none"> • Continue the Anti-Stigma Social Media Campaign • Continue to promote Mental Health First Aid. • Work collaboratively to support advocacy efforts of existing behavioral health and substance abuse coalitions and organizations. • Increase number of MAT and Substance Use programs available for Will County residents; primarily Medicaid recipients • Work with Federally Qualified Health Centers to address behavioral health

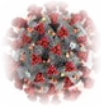
	<p>needs of Medicaid and uninsured populations.</p> <ul style="list-style-type: none"> • Capacity building and coordination of services among providers. • Increase number of Narcan Trainings, Narcan Policies and Narcan available in Will County; for worksites, institutions, and for target populations. • Work to educate worksites, institutions and will county residents of mental health disorders, signs and symptoms, and improve access to care through GIS maps and technical assistance; (i.e. “Know Where to Go” and “MAPP Collaborative” websites and social media pages) • Provide Will County worksites with worksite toolkits to incorporate mental health policies on site to improve productivity and improve wellness of employees. • Evaluate facilities for wellness outcomes through the “WeWILL Work Healthy Worksite Application” process • Award worksites at Will County First Annual “Community of Wellness” Conference, to be hosted in the first year of the new MAPP Cycle of each MAPP Cycle
<p>Resources:</p> <ul style="list-style-type: none"> • Will County Substance Use Initiatives program; Recovery program • Will County Health Department • Will County Community Health Center • Aunt Martha’s • VNA Health Care • Hospitals • Crisis Line of Will-Grundy Counties • Faith-based Organizations • Hospitals • Behavioral Health Providers • Will County MAPP Collaborative • Will County Workforce 	<p>Barriers:</p> <ul style="list-style-type: none"> • Need for additional substance mis-use treatment and services in Will County • Need for additional behavioral health providers • Resources for uninsured population • Social stigma • Resources not equally accessible in all parts of the county • Language barriers

Action Team: Stabilizing the Built Environment

<p>Health Problem:</p>	<p>Outcome Objective:</p> <ul style="list-style-type: none"> • By December 2022, expand advocacy to improve health equity among the
-------------------------------	---

<p>Housing insecure and Transportation insecure residents of Will County experience higher rates of disparity and co-morbidities, and reduced quality of life.</p>	<p>housing insecure and transportation insecure populations of Will County</p> <ul style="list-style-type: none"> By December 2022, Stabilize and expand emergency shelters within 60432, 60433, 60435
<p>Risk Factors:</p> <ul style="list-style-type: none"> Availability and access to affordable housing Availability and access to employment Limited access to transportation Limited access or eligibility for assistance and resources Limited capacity for emergency or rapid housing for unsheltered homeless Substance abuse Mental illness Exposures to substandard conditions; lack of heat, water access, refrigeration, etc. Built environment frameworks (i.e. safety of walking routes, accessibility of walking routes) 	<p>Impact :</p> <ul style="list-style-type: none"> Increase and improve access by linking target population of housing and transportation insecure individuals to “Know Where To Go” to get health and social services Increase knowledge related to target population barriers through data retrieved by target population survey/assessments Increase collaborative efforts of cross sector organizations of will county to address housing and transportation insecurity in Will County among Will County residents.
<p>Contributing Factors (Direct or Indirect)</p> <ul style="list-style-type: none"> Availability and access to primary and preventative care Availability and access to counseling and screening programs for behavioral health and/or substance mis-use Age of first use of drugs Lack of knowledge of services available in the community Family history of mental disorder Mistrust, inconvenience or invincibility perceptions Availability and access to data that indicates social determinants of health within target population 	<p>Intervention Strategies:</p> <ul style="list-style-type: none"> Implement a Referral System and Sharing Network Develop a MOU and process of population level inter-agency HIPAA compliant data sharing. Develop a standardized report for target population data Share report with Cross-sector organizations Develop screening tool for target population, HIPAA compliant. Utilize Microsoft teams to share data with cross sector organizations. Develop a GIS MAP to indicate health and social services from Biking and Walking paths
<p>Resources:</p> <ul style="list-style-type: none"> Will County Center for Community Concerns Will County Community Health Center 	<p>Barriers:</p> <ul style="list-style-type: none"> Need for additional primary care physicians

<ul style="list-style-type: none">• Will County Health Department• Catholic Charities Daybreak• Morning Star Mission• Continuum of Care• Crisis Line of Will-Grundy Counties• Faith-based Organizations• Hospitals• Behavioral Health Providers• Will County MAPP Collaborative• Will County Land Use	<ul style="list-style-type: none">• Need for additional behavioral health providers• Resources for uninsured population• Social stigma• Resources not equally accessible in all parts of the county• Language barriers• Transportation barriers
--	--



CORONAVIRUS PANDEMIC OF 2020

Will County, and the remainder of the world, have been facing a global pandemic since December of 2019, unbeknown until March of 2020. In the light of the SARS-COV-2 virus that causes the COVID-19 disease, the world has just begun to understand the significant burdens and adverse health outcomes for the populations it effects. Will County alone has seen over 24,00 cases to date and over 450 deaths with an current positivity rate of over 17%. The impacts of this pandemic have been cross sectional, effecting all industries at a multitude of levels. The MAPP Collaborative did not operate for approximately 6 months during the pandemic due to social distancing, isolation, safety procedures, and the need for these health and social service leaders to respond to the pandemic. In September and November of 2020, the collaborative was able to meet virtually in order to reconvene the implementation of the activities outlined above to meet the designated objectives.

COVID-19 Coordinated Health Response:

The initial response to the pandemic was highly technical due to the barriers exuded in collaborative working groups during a time of isolation. Remote work and essential criteria were outlined. Guidelines were provided, and response included utilizing technical platforms, social media, and virtual education as a means of delivering health messaging. As framework-was built, structure for improved workforce efficiency met with continued research and innovation, and program interventions began. Including but not limited to, Contact Tracing in accordance with reaching 90% of cases within 24 hours. Resource Coordination, Alternative Housing, Educational Campaigning, Data sharing and transparency, worksite guidance for congregate settings, nursing facilities, long term care facilities, school settings and other public settings: Community outreach & health promotion, participation in virtual and community events to educate the public on Covid-19 prevention, testing and mitigations have occurred since March 2020. Distribution of COVID testing site flyers and education in both English and Spanish have been provided to residents of the County. Personal Protective Equipment such as masks and resources (donated from community partners) have been provided at food pantries and other forms of community reach has been very effective in meeting needs. Many significant COVID activities are as outlined below:

- The wide expansion and implementation of primary and behavioral telehealth services and programs; many organizations have seen a decline in attrition due to telehealth services.
- The successful implementation of a Integrated Referral System (IRIS) with over 50 participating social and health service programs and agencies providing accountable and measurable referrals throughout Will County. Over 100 families have received successful referrals to date.
- The design and implementation of 3 COVID-19 websites, 1 specific to testing information and a GIS map of testing sites, another to provide education and guidance, and a third to provide daily analyzed data related to COVID-19 cases and deaths in Will County. Reach over 10,000.
- Over 6,500 COVID tests have been performed on Will County residents through local FQHC's VNA, Aunt Martha's and Will County Community Health Center, at no cost, targeting towns and zips with high positivity rates and underserved regions of Will County.
- The Will County Workforce and MAPP partnered to provide over 2,200 worksites with workplace guidance, signage for COVID-19 for their facilities, education and protocol.
- Approximately 1,600 COVID-19 Community surveys have been completed by Will County residents providing (KAP) Knowledge, Attitudes, and Perceptions and behaviors surrounding the disease, representing each zip of the county.
- Public response and media reach topped over 250,000 during peak pandemic months.

Overarching MAPP Process:

The creation of two websites occurred:

The MAPP Collaborative website; outlining the MAPP process, Data and Report access, the prioritized health needs during the 2020 cycle and the access to all implementation and intervention form each of the teams.

- <https://the-will-county-mapp-collaborative-willcountygis.hub.arcgis.com/>

The Know Where to GO website; providing information and GIS mapping to connect directly to Primary, Behavioral Health and Dental services throughout the county. Including but not limited to providing information on which facilities accept Medicaid are Federally Qualified Health Centers, access to educational handouts, resources guides, and even access to social and health services from a walkability/bike-ability perspective.

- <https://know-where-to-go-willcountygis.hub.arcgis.com/>

The First Annual “Community of Wellness” Conference with “Hot Topic” breakout sessions to be held in the first year of each MAPP cycle to share prioritized needs with the stakeholders, health professionals, cross sector partners, and community members; as well as boost advocacy and participation among agencies and community members at large to work together to improve quality of life for residents. **put on hold until large gathers can be accommodated.*

Access to Food and Nutrition

This action team continued to offer both traditional mobile pantry food sites at socially vulnerable pockets of the community during the pandemic, but also the RX Mobile food pantries, providing nutritional produce, meat and dairy items only to those referred, that occur at AMITA Health Hospital and YMCA centers to provide needed food for socially vulnerable populations during this pandemic. Social distancing, face cover, and disinfection procedures were adhered to during these events. Meals were donated to several participating organizations of social need within the county; including but not limited to:

- MAPP Collaborative partners AMITA Health and Northern Illinois Food Bank provided 25 Mobile Food Pantries offered in socially vulnerable sections of the county
- Mobile food pantries served 196,678 meals to 12,300 individuals and 3,278 families,
- 238,141 lbs. of total food donated.
- Food pantries throughout the county providing food to roughly 1000 families per month in socially vulnerable sections of the county through curbside pick-up services, delivery services for those that are elderly, or requiring isolation. Including hot meals and additional resources such as face coverings, hand sanitizer, gift cards, health education and more.
- Over 1,300 individual meals shared with Morning Star Mission, WCCCC (CoC) Unsheltered Homeless in Hotels, Daybreak Shelter, Salvation Army, Boys and Girls Club Joliet
- Over 2,000 face coverings donated to HEAL Pantry @ Holsten Human Capital Development
- Over 200 Holidays meals shared through HEAL pantry @ Holsten Human Capital Development
- Over 400 face coverings were donated to Morning Star Mission Pantry and Shelter
- Over 400 face coverings and gloves provided to Daybreak Pantry and Shelter
- Will County Senior Services offered over 18,900 lbs of food delivered directly to seniors
- Edward-Elmhurst hospital donated over \$80,000 in food to those in need during the pandemic.

- Catholic Charities had continued their head start program throughout the pandemic, following guidelines to keep students safe, providing free box lunches and prepared meals for all families in need.

Access to Health Care

Due to the COVID pandemic, CMS (Centers for Medicare/Medicaid Services) implemented a reimbursable rate for the use of telehealth for primary care and behavioral health services. This maintained and expanded the reach that the health programs offered to residents that could not access in person services due to COVID-19 risks, but also if they were residents that had transportation or access insecurity prior to the pandemic. The partnerships between the free clinic WGMC (Will Grundy Medical Clinic) and the Federally Qualified Health Centers continues to track patients transferred 200 patients to “medical homes’ within the county and offer specialty services to those that are most socially vulnerable and in need. AMITA Health has referred over 300 patients to medical homes through VNA and Aunt Martha’s Health Care. Insurance enrollment continues to increase access for residents of Will County to seek affordable health care options. The Lewis University Nursing program, the United Way of Will County, and Emergency Preparedness and Response of Will County donated needed PPE and thermometers, as well as triage training was provided to the partner organizations, including but not limited to programs designed to assist unsheltered homeless that were being housed in nearby hotel encampments. The Will County Health Department devised a COVID-19 Website to address and share Will County level data, current information related to regulations, mitigations and restrictions, and testing site locations. The Will County Community Health Center offers mobile van testing of several public and congregate settings through socially vulnerable and high positivity rate areas of Will County.

- The Will County Community Health Center has performed over 5,500 COVID test at no cost for Will County residents in underserved regions through their mobile van with over 410 site visits.
- The Will County Community Health Center donated over 5,000 face covering to local socially vulnerable regions through partnering programs and organizations
- The COVID19 Community Services collected over 1,500 individual responses from every geographic area of Will County to look at response to emergency threats and behaviors during the pandemic, available in English and Spanish.
- Coronavirus Health Education and Data was promoted to Will County residents through media reach from March through December, with a peak reach of over 250,000 residents.
- Over 4,000 face coverings with the COVID-19 Community Survey available in English and Spanish provided from the Mobile Testing Van at socially vulnerable congregate and public sites
- Over 1,400 COVID-19 tests have been provided through mobile, drive up and in person throughout Will County through Aunt Martha’s.
- Aunt Martha’s has 2 mobile vans used for COVID testing in areas with lack of access to transportation and those with social vulnerabilities at no cost.
- VNA Healthcare offers drive up COVID testing 7 days a week, all day since July of 2020 at no cost. Including a drive through diabetes/blood pressure clinic to maintain coordinated care of those with chronic conditions.
- Over 500 individuals were transferred to “medical homes” in Will County through partnerships between the local Hospital Emergency Departments and Free Clinics to the FQHC’s.
- Will Grundy Medical Clinic has provided over 350 telehealth visits, including a language line for translation
- The Will County Workforce and MAPP partnered to provide over 2.200 worksites with workplace guidance, signage for COVID-19 for their facilities, education and protocol.

- Dental care kits will be provided at outreach activities through the Will County Community Health Center Dental program.
- Silver Cross hospital has tested over 30,000 local residents for COVID-19 and has hospitalized over 900.
- Silver Cross hospital has provided PPE, framework and education to nursing homes and congregate facilities in Will County.
- AMITA Health provided “Care Kits” of Sanitizer, PPE, Disposable thermometers, and educational toolkits for residents and patients.
- AMITA Health has provided the successful transfer to medical homes VNA and Aunt Martha’s of 316 Patients.
- FQHC’s throughout will county have provided mobile testing for COVID-19 at local universities for those with symptoms, exposed to the virus, and living and participating in activities sin which social distancing cannot occur (i.e. sports teams)
- Silver Oaks behavioral hospital altered physical infrastructure to devise isolation units in their inpatient facility to keep residents safe and receiving care during the pandemic.
- Edward-Elmhurst hospital worked closely with local chambers and municipalities in the northern region of Will County to provide infection control programs.
- Edward-Elmhurst hospital had over 200 individuals creating and donating homemade masks to essential workers and community members.
- Will County Health Department, Will Grundy Medical Clinic, and others have partnered with Spanish Community Center of Joliet to provide services and translated health literacy materials. to the LatinX populations of Will County.

Behavioral Health and Substance Use

The expansion of telehealth has expanded reach for those in the county needing behavioral and mental health services. The Will County Health Department has instated a Substance Use program to begin operations in the coming months to bridge a gap in access to substance use services and treatments within Will County. The pandemic however, has caused some increases in substance use when individuals were no longer able to seek in person services; for those that are in recovery or in current treatment, in person care is most effective for sustainable outcomes. The recovery coach program through the Will County Substance Use initiatives program has provided

- The Behavioral Health Tip of the day had peak reach and share of over 7,000 individuals
- The CALL 4 CALM Campaign instated by IDHS offered exposure to text “Talk” or “Hablar” to 572020 to get real time behavioral health services offered to you from the local health department behavioral health program. X Services were offered through this initiative.
- The implementation of a substance use treatment program for Will County Health Department Behavioral Health Division.
- Educational prototypes and campaigns were created on Signs and Symptoms of Stress, Anxiety in Children, Teens, Adults, Elderly, and those in the Workplace with a media reach of over 250,000.
- Over 200 face coverings donated to the Will County Opioid Initiatives Recovery Program
- Nearly 2500 boxes, roughly 5000 doses, of Naloxone (Narcan) and Narcan Training have been distributed throughout Will County to socially vulnerable, unsheltered homeless, agencies for worksite implementation, emergency response, rapid response, and other organizations.
- Aunt Martha’s is providing substance use treatment at all locations using telepsych practices.
- Easterseals of Joliet is continuing autism assessments, including vision, speech and occupational therapy through telehealth services where possible and in person with safety mitigations and guidelines in place.

- Stepping Stones of Joliet provided extended residential halfway housing for all inpatient in need during the pandemic.
- Trinity Services is providing remote therapy services to schools, in addition to traditional telehealth services, in the area during the pandemic.
- Valley View School district is working with Park Grove behavioral health to provide telehealth and some in person assessing for students in need; such as those with autism and emotional and behavioral disorders.
- Will County Health Department Behavioral Health division has instated a crisis staffing program, addressing civil unrest and effects of COVID-19 on the community.
- Catholic Charities has provided counseling for students and families through the pandemic.
- Will County Executive Office Substance Use Initiatives program has received over \$100,000 to provide harm reduction throughout Will County.
- Will County Executive Office Substance Use Initiatives program has received funds to provide alternative housing for those experiencing substance use issues and those residents in need of Will County.
- Will County Senior Services provided over 12,000 phone calls to seniors for Well Checks during the pandemic.
- Will County Senior Services provided over 4,000 post cards through the mail system for Seniors that are not online. These post cards included encouraging messages, information updates and more.

Stabilizing the Built Environment

Social Vulnerability prior to COVID-19 had a large impact on residents based on given regions of the county; primarily zips of Joliet, Bolingbrook, Romeoville, and rural eastern and southern portions of the county. The Built Environment of a county effects directly social determinants that can provide equity or provide disparity between populations. The conditions in Will County surrounding housing insecurity have become top concerns, as unsheltered homelessness has a direct correlation with poor health outcomes and reduced quality of life, even life expectancy. The cost burden on a local health system can surmount and surpass that of intervention for the target population. The Will County MAPP collaborative is working to devise an approved MOU with the Will County Center for Community Concerns in order to share data related to health disparities within this population. Collection and sharing of an annual report will provide a population level glimpse of this public health issue and advocate for implementation of intervention among this issue throughout the cross sector of organizations within the county to work together to meet the needs of those that are housing insecure. An Alternate Housing Program was instated to minimize community spread of COVID -19 and the (re) introduction of infection into communities, there is a need to separate and restrict the movement of people who are exposed to, or infected (and do not require hospitalization) with COVID and need to quarantine or isolate. The people (Cases) housed are by majority unsheltered homeless. Others are unable to safely quarantine away from others in their homes because of other factors.

- 17 individual cases referred to Alternate Housing Program at Will County Health Department
- 9 individual cases placed in Housing since July of 2020 through WCHD
- Roughly 60 unsheltered homeless individuals housed in hotels through the Continuum of Care efforts in Joliet from March through July of 2020
- Over 1,500 face coverings and gloves were donated to the WCCCC (CoC) Unsheltered homeless in hotels, including infrared thermometers for health screening
- Over 400 face coverings and gloves were provided to Morning Star Mission
- Over 400 face coverings and gloves were provided to Daybreak Shelter
- Blankets, Clothing, Shoes, Bags, and more resources were donated to the WCCCC (CoC) unsheltered homeless event

- Provided over 500 families in low-income areas with coronavirus information and PPE
- Spanish Community Center will be providing rental and mortgage assistance for families of need throughout Will County, targeting but not limited to immigrants.
- Riverwalk Homes is providing enrollment assistance for health, social, and other resources needed for those living in Riverwalk or those that attend the HEAL pantry in Joliet.
- YMCA offered emergency day care for First Responders during initial phases of the pandemic as well as Mobile Food Pantries, Rx mobile pantries, and other drive up events for youth and adults throughout the community.
- National Hook UP for Black Women Inc. have continued to work with socially vulnerable communities of Joliet to provide food and resources during the pandemic.
- Catholic Charities has provided alternative housing in hotels for families that were in need during the stay at home order.
- Catholic Charities has provided over 350 social and emotional kits to families in need.
- Cornerstone services of Joliet provided 21 individuals/families with alternative housing for homeless during the pandemic.
- AMITA St. Joseph Hospital has provided over 90 screenings for housing insecure individuals uninsured and/or receiving Medicaid, and provided needed services and referrals.
- AMITA Bolingbrook hospital has provided over 80 screenings for housing insecure individuals receiving Medicaid and/or uninsured, providing services and referrals.

Healthy People 2020

Healthy People 2020 (HP2020) provides a comprehensive set of 10-year, national goals and objectives for improving the health of all Americans. A smaller set of HP2020 objectives, called Leading Health Indicators (LHIs), have been selected to communicate high-priority health issues and actions that can be taken to address them. For this report, a selection of HP2020 LHIs are outlined below. The data shown is the most current data available. Additional HP2020 statistics are included within the report narrative.

■ Meets Healthy People 2020 Target ■ Does Not Meet Healthy People 2020 Target

Leading Health Indicator Category	HP2020 Target	Will County	Illinois
ACCESS TO HEALTH SERVICES			
Persons with medical insurance	100%	93%	90%
Persons with a usual primary care provider	83.9%	84.1%	79.9%
Adults receiving colorectal cancer screening based on the most recent guidelines	70.5%	69.9% (2014)	68.3% (2016)
INJURY AND VIOLENCE			
Homicides	5.5 homicides per 100,000 population	3.6 homicides per 100,000 population	7.01 homicides per 100,000 population
MATERNAL, INFANT, AND CHILD HEALTH			
All infant deaths	6.0 infant deaths per 1,000 live births	6.7 infant deaths per 1,000 live births	6.4 infant deaths per 1,000 live births
Total preterm live births	9.4%	10.4% (2016)	10.4% (2018)
MENTAL HEALTH			
Suicide	10.2 suicides per 100,000 population	11.5 suicides per 100,000 population (2017)	10.3 suicides per 100,000 population (2016)
Adolescents with a major depressive episode in the past 12 months	7.5%	35%	31%
NUTRITION, PHYSICAL ACTIVITY, AND OBESITY			
Obesity among adults	30.5%	31.1%	28.4%
Obesity among children and adolescents	14.5%	11% (2018)	11% (2016)
ORAL HEALTH			
Children, adolescents, and adults who visited the dentist in the past year	49%	74.3% - Adults (2014)	65.5% - Adults (2016)
SOCIAL DETERMINANTS			
Students graduating from high school 4 years after starting 9th grade	87%	93%	85%
SUBSTANCE ABUSE			
Adolescents using alcohol or illicit drugs in past 30 days	12.8%	21.6% (2018)	24.3% (2016)
Binge drinking in past month—Adults	24.2%	23.6%	20%
TOBACCO			
Adult cigarette smoking	12%	13.4%	16.7%
Adolescent cigarette smoking in past 30 days	16%	1.9% (2018)	4.4% (2016)

Source: Healthy People 2020

Will County Behavioral Health Strategy 2020-2025

Outcomes

Destigmatize Mental Health and Substance Use Disorders for Will County Residents

Strategies

Reduce Social Stigma related to mental health and substance use "in the Home and Institution"

Increase number of Public Settings that adopt Mental health and wellness programs

Increase exposure to education of Symptoms, Signs and Access to care for mental health and substance use disorders

Increase number individuals with access to mental health and substance use programs in Will County

Increase exposure to "Know Where to Go" website and media for Will County residents to seek social and health services

Increase number of individuals provided with Narcan and Narcan Training

Assets & Capacity

Partnerships and Collaborations with Will County Behavioral Health and Substance Use Stakeholders

Evaluate and Data Share among cross sector of agencies to prioritize community needs

**Will County MAPP Collaborative
IPLAN 2020-2025
LOGIC MODEL: Behavioral Health and Substance Use Action Team
2019-2022**

Inputs	Activities	Outputs	Outcomes	Impacts
<ul style="list-style-type: none"> • Behavioral Health Action Team members • MAPP Collaborative Partners • Will County Agencies • Recovery Coach Program Staff of County Executive Substance Abuse Initiatives program • Narcan Training materials • Narcan Training presentation • Narcan Trainor (Dr. Kathleen Burke) 	<ul style="list-style-type: none"> • Design Workforce toolkit for mental health and wellness promotion in the workplace • Disseminate to all Will County Worksites the Mental Health and Wellness toolkit • Utilize National and Approved standards of evaluation methods for mental health and behavioral health resources and wellness for worksites • Evaluate the worksites that incorporate mental health and wellness activities into their workplace • Design technical assistance that links socially vulnerable and target populations to improve care coordination and linkage to health and social services • Promote technical assistance platforms to 	<ul style="list-style-type: none"> • # of Toolkits Designed • #of Toolkits distributed • # of worksites received toolkit • # of worksites received WeWill Work Healthy Survey • # of Worksites applied for WeWILL Work Healthy awards • # of Worksites with “Robust” Mental Health policies (Earning Bronze or Higher Award) • # of view to “Know where to go” website • # of surveys completed by “know where to go” visitors • Data recovered from Survey: Likelihood of using services 	<ul style="list-style-type: none"> • Improve access to Behavioral Health Medical Homes • Increase use of Behavioral Health Medical homes • Improve awareness of youth and adult mental health and behavioral health needs • Increase access to MAT and First Aid for all Will County residents • Increase behavioral health and wellness initiatives for Will County residents through Will County worksites • Increase number of facilities with Narcan policies 	<ul style="list-style-type: none"> • Increase behavioral health and substance use awareness for will county residents through Will County Worksites target by .5% • Increase behavioral health and substance use awareness for Will County residents “in the home” by .5%

**Will County MAPP Collaborative
IPLAN 2020-2025
LOGIC MODEL: Behavioral Health and Substance Use Action Team
2019-2022**

	<p>target population and socially vulnerable populations to increase likelihood of use of social and health services through “Know Where to Go” website.</p> <ul style="list-style-type: none"> • Train and provide Narcan and its proper use to socially vulnerable populations of Will County • Promote the Implementation of Narcan use and/or policies in Workplaces of Will County • Devise a baseline for health literacy in the community through the community survey/assessment 	<p>after exposure to website.</p> <ul style="list-style-type: none"> • # of residents trained on Narcan Use • # of worksites trained on Narcan use • # of Narcan provided to residents of Will County • # of Worksites with Narcan policies or use Narcan onsite in First Aid • # of educational handouts provided • # of responses to MAPP surveys 		
--	---	---	--	--

Will County Access to Health Care Strategy 2020-2025

Outcomes

Improve Access to Health Care for Will County Residents

Strategies

Reduce the amount of individuals with low access to health care

Increase number individuals with “medical homes” through improving access techniques

Increase the number of individuals provided with medical benefits

Increase outreach of services and programs to target populations

Increase exposure to “Know Where to Go” website and media for Will County residents to seek health and social services in Will County

Increase use of local health system; (nursing program students, hospitals, etc.) to assess and evaluate social determinants of health for target populations

Assets & Capacity

Partnerships and Collaborations with Will County Health Care Stakeholders

Evaluate and Data Share among cross sector of agencies to prioritize community needs

**Will County MAPP Collaborative
IPLAN 2020-2025
LOGIC MODEL: Access to Health Care Action Team
2019-2022**

Inputs	Activities	Outputs	Outcomes	Impacts
<ul style="list-style-type: none"> • Access to Health Care Action Team Members • MAPP Collaborative Partners • Will County Agencies • Will Grundy Medical Clinic • Will County Community Health Center • AMITA St. Joseph Medical Center • VNA Health Care • Aunt Martha's Health Care • 	<p>Ensure targeted communities with lowest rates of health coverage are served through education on available medical resources through marketing and education and appropriate referrals.</p> <ul style="list-style-type: none"> • Refresh Asset mapping of resources • Inventory marketing materials for target community members • Assess direct outreach sites and target community agencies as satellites for outreach and education • Develop easy to understand marketing materials to educate community agencies and residents on available services and locations. • Develop education plan to community agencies and residents on importance of a primary care medical home to maintain health. 	<ul style="list-style-type: none"> # of agencies supporting efforts # of surveys collected. # of barriers identified # of evidence-based strategies reviewed and selected # of communication, education, and outreach plans reviewed and selected # of clients serviced with enrollment activities # of outreach events/online # of sites with mobile van # of patients provided "medical home" from WGMC partnership # of patients provided specialty services from WGMC partnership # of dental services # of enrollees in health care benefits from 2017- current; Will County Health Centers (i.e. Aunt Marthas, VNA, AMITA, Silver Cross, Will County Community Health Center, etc.) 	<ul style="list-style-type: none"> • Improve and increase access to dental, primary and behavioral health services for Will County residents • Decrease those target population residents utilizing ER and Free clinics for primary related care • Increase those target population residents with "Medical Homes" • 	<ul style="list-style-type: none"> • By Oct 2022 increase percentage of adults living in 60433. 60432 who have a source of primary medical care by 2.5%. • By Oct 2022 increase the number of individuals enrolled in health care benefits from 60433,60432 through local health system by 5%. •

**Will County MAPP Collaborative
IPLAN 2020-2025
LOGIC MODEL: Access to Health Care Action Team
2019-2022**

	<ul style="list-style-type: none"> • Improve health literacy by exposure to both English and Spanish prototypes and education. • Refine/develop a formalized referral process between hospitals and FQHCs and WGMC for referral of ED patients who do not have a source of primary care for follow up • Establish database with Behavioral Health Action Team of targeted providers and agencies • Target outreach and education behavioral health providers, agencies and homeless shelters • Develop an enhanced Access to Healthcare Action Team to build membership to represent key skills , community 	<p>Zip codes associated with patient transfer to primary medical homes # of patients transferred to primary medical home</p> <p># of individuals uninsured currently residing in 60433, 60432, 60435, 60436</p>		
--	--	---	--	--

**Will County MAPP Collaborative
IPLAN 2020-2025
LOGIC MODEL: Access to Health Care Action Team
2019-2022**

	<p style="text-align: center;">involvement and commitment.</p> <ul style="list-style-type: none"> • Membership to expand to include dental providers, professional organizations and community members <p>Data sharing measures</p> <p>Ensure targeted communities with lowest rates of health coverage are served through education on available marketplace insurance and Medicaid enrollment opportunities.</p> <ul style="list-style-type: none"> • Establish key contacts at community locations • Monitor barriers to enrollment in available health coverage: <ul style="list-style-type: none"> • Public Charge, Marketplace. <p>Engage community partners to implement a community plan for access to primary oral health through education, community and professional networking, marketing, and</p>			
--	--	--	--	--

**Will County MAPP Collaborative
IPLAN 2020-2025
LOGIC MODEL: Access to Health Care Action Team
2019-2022**

	<p>development of effective referral mechanisms.</p> <ul style="list-style-type: none"> • Establish advisory committee of Dentists, professional organizations to assist in education for preventive care and development of enhanced dental referral network. • Identify current sources of dental coverage: insurance, Medicaid, FQHC, community screening events • Arrange joint mobile screening and preventive care event in underserved area • Outreach and education to community members on current dental benefits and available resources (dental insurance and Medicaid, and Medicaid insurance benefits). <p>Provide input and support to WCHD staff working with the Well-Women Planning Grant that will be used, if awarded,</p>			
--	--	--	--	--

**Will County MAPP Collaborative
IPLAN 2020-2025
LOGIC MODEL: Access to Health Care Action Team
2019-2022**

	to increase Will County well-women visits for women of childbearing years, aged 18-44. This Implementation plan will be submitted by the end of FY20.			
--	---	--	--	--

Will County Access to Food and Nutrition Strategy 2020-2025

Outcomes

Improve Food Access and Nutrition for Will County residents

Strategies

Reduce the amount of individuals with low access and low eligibility for food

Increase number of food pantries that provide food with nutritional* value for those with chronic disease

Increase number of individuals provided with Food each year

Increase produce and grocer access for food insecure residents of food deserts in Will County

Increase exposure to “Know Where to Go” and “Food Access Website Maps” and media for Will County residents to seek food services in Will County

Increase exposure to education of health outcomes and awareness of meals that provide nutritional* value made from pantry items

Assets & Capacity

Partnerships and Collaborations with Will County Food Access Stakeholders

Evaluate and Data Share among cross sector of agencies to prioritize community needs

**Will County MAPP Collaborative
IPLAN 2020-2025
LOGIC MODEL: Access to Food and Nutrition Action Team
2019-2022**

Inputs	Activities	Outputs	Outcomes	Impacts
<ul style="list-style-type: none"> • Access to Food and Nutrition Action Team Members • MAPP Collaborative Partners • Will County Agencies • Northern Illinois Food Bank • Will County Land Use • Will County 	<ul style="list-style-type: none"> • Continue to update the Food Access GIS Maps • Develop a shorter easy to remember link for the maps • Promote Food Access maps • Coordinate and evaluate mobile pantries in communities of need • Determine locations for new mobile pantries • Secure mobile pantry sponsors • Develop a mobile pantry checklist • Schedule volunteers and logistics for mobiles • Track mobile pantry data • Work with corporate sponsors to fund the cost of Will County mobiles pantries • Promote mobile food pantries (social media, schools, businesses, 	<p>Number of hits on the GIS website</p> <p>Number of mobile food pantries</p> <p>Number of lbs of food, # of households, # of meals served, # of individuals served, # of volunteers at mobile food pantries</p> <p>Number of corporate sponsors</p> <p>Funding for mobile food pantries</p> <p>Increased number of food pantries and people provided food</p> <p>Number of ways mobile food pantries were promoted</p> <p>Number of hits to the mobile pantry map website</p> <p>Number of ways micro pantries were promoted</p> <p>Number of hits to the micro pantry map website</p> <p>Number of new micro pantries</p> <p>Number of donations</p>	<p>By December 31, 2023, decrease the percent of Will County residents with low to no food access in Will County to 25%.</p> <p>2010 Baseline Data: 45.21% WC; 20.44% IL; 23.61% US (2010, US Dept. of Agriculture, Economic Research Service, USDA)</p> <p>2015 Data: 40.83% WC; 19.36% IL; 22.43% US (2015, US Dept. of Agriculture, Economic Research Service, USDA)</p> <ul style="list-style-type: none"> • 2016 Data: 31.8% WC; 17.69% IL; 19.04 US 	<p><u>Grocery Store Access</u></p> <p>By December 31, 2023, increase the rate of grocery establishments to a rate of 20 per 100,000.</p> <p>2014 Baseline Data: 15.05 WC (IL 21.8; US 21.1)</p> <p>2016 Data: 17.8 WC (28.1 IL; 29.9 US)</p> <p><i>Source: 2016, US Census Bureau, County Business Patterns</i></p> <p><u>Low Income and Low Food Access</u></p> <p>By December 31, 2023, decrease the percentage of low income population that has low access to food to 5%</p> <p>Baseline: 6.85% (IL 4.56%; US 6.27%)</p> <p><i>Source: 2010, US Dept. of Agriculture, Economic Research Service, USDA – Food Access Research Atlas</i></p> <p><u>Food Insecurity</u></p> <p>By December 31, 2023, decrease the percentage</p>

**Will County MAPP Collaborative
IPLAN 2020-2025
LOGIC MODEL: Access to Food and Nutrition Action Team
2019-2022**

	<p>housing, senior populations, press release, websites, etc.)</p> <ul style="list-style-type: none"> • Promote awareness of Micro Pantry location • Increase the number of micro pantries and donations to Guardian Group for healthy food (fruit, veggies, meats, whole grains, etc.) • Increase the number of organizations screening for food insecurity • Promotion of screening tool • Linkage to Rx Mobiles • Education on food resources (map flyer, find food flyer, etc.) • Develop a Screening Commitment form for organizations • Link food insecure people to proper resources for food (WIC, SNAP, Pantries, Mobiles, Micros, map flyer, find food flyer, etc.) 	<p>Number of organizations screening for food insecurity</p> <p>Number of commitment forms received</p> <p>Number of resources developed/distributed</p> <p>Number of hits to GIS food map website</p> <p>Number of outreach activities attempted</p> <p>Number of prototypes developed</p> <p>Number of strategies developed</p> <p>Number of strategies implemented</p> <p>Number of gardens added to food pantry locations</p> <p>Number of advocacy activities</p> <ul style="list-style-type: none"> • 		<p>of the population that is food insecure and ineligible for assistance to 35%</p> <p>Baseline: 47% total population ineligible (IL 32%, US 29%); 46% children ineligible (IL and US 31%)</p> <ul style="list-style-type: none"> • <i>Source: 2013, Feeding America</i>
--	---	--	--	---

**Will County MAPP Collaborative
IPLAN 2020-2025
LOGIC MODEL: Access to Food and Nutrition Action Team
2019-2022**

	<ul style="list-style-type: none">• Increase healthy food education opportunities• Provide healthy recipes and meal suggestions with food provided at mobiles, micros and in food pantries (provide recipe cards for food being distributed)• Determine and implement strategies to address physical barriers to get food home from pantries and mobiles and to cook the food (microwave cooking recipes, access to pans, crockpots, etc.)• Increase healthy food choices by expanding community gardens throughout Will County (research DeKalb County community garden project)• Advocate for a grocery store in the 60433 zip code			
--	---	--	--	--

Will County Built Environment Strategy 2020-2025

Outcomes

Improve Access to Care for Socially Vulnerable Populations of Will County Residents

Strategies

Reduce adverse health outcomes associated with being unsheltered homeless

Increase number individuals with “medical homes” through improving access techniques

Increase number of individuals that have been provided stabilized shelter

Increase outreach of services and programs to target populations

Increase exposure to “Know Where to Go” website and media for Will County residents to seek health and social services in Will County

Increase use of local health system; (nursing program students, hospitals, etc.) to assess and evaluate social determinants of health for target populations

Assets & Capacity

Partnerships and Collaborations with Will County Health Care and Socially Vulnerable Populations Stakeholders

Evaluate and Data Share among cross sector of agencies to prioritize community needs

**Will County MAPP Collaborative
IPLAN 2020-2025
LOGIC MODEL: Stabilizing the Built Environment Action Team
2019-2022**

Inputs	Activities	Outputs	Outcomes	Impacts
<ul style="list-style-type: none"> • Built Environment Action Team members • MAPP Collaborative Partners • Will County Agencies • Will County Center for Community Concerns Staff • IRIS Network System 	<ul style="list-style-type: none"> • Implement a Referral System and Sharing Network • Develop a MOU and process of population level inter-agency HIPAA compliant data sharing. • Develop a standardized report for target population data • Share report with Cross-sector organizations • Develop screening tool for target population, HIPAA compliant. • Utilize Microsoft teams to share data with cross sector organizations. • Develop a GIS MAP to indicate health and social services from Biking and Walking paths • 	<ul style="list-style-type: none"> • Data sets available for analysis of meaningful use; prioritized by objective measures. • # of agencies with access to report • # of reports provided per calendar year • # of outreach provided with linkage materials and educational handouts • # of views to website: Know where to go • # of views to website: MAPP Collaborative • # of participants to “Housing and Transportation Insecurity Survey” • Data retrieved from “Housing and 	<ul style="list-style-type: none"> • Increasing and improving access by Linking target population of housing and transportation insecure individuals to “know where to go” to get health and social services • Increase knowledge related to target population barriers through data retrieved by target population survey/assessments • Increase collaborative efforts of cross sector organizations of will county to address housing and transportation insecurity in Will County among Will County residents. 	<ul style="list-style-type: none"> • Improve health equity and expand advocacy related to the housing insecure and transportation insecure populations of Will County through gaining and sharing increased knowledge and data related to the target population among the collaborative

**Will County MAPP Collaborative
IPLAN 2020-2025
LOGIC MODEL: Stabilizing the Built Environment Action Team
2019-2022**

		<ul style="list-style-type: none">• Transportation insecurity Survey”		
--	--	---	--	--

Behavioral Health and Substance Use

AGAPE MISSION	840 PLAINFIELD RD	JOLIET	IL 60435
CHESTNUT HEALTH SYSTEMS	829 CAMPUS DR	JOLIET	IL 60535
CORNERSTONE SERVICES INC.	777 JOYCE RD	JOLIET	IL 60435
STEPPING STONES, INC.	1621 THEODORE ST	JOLIET	IL
TRINITY SERVICES INC.	301 VETERANS PARKWAY	NEW LENOX	IL 60451
BREAST INTENTIONS OF ILLINOIS	1147 BROOKFOREST AVE	SHOREWOOD	IL
LINDEN OAKS	852 S WEST ST		IL
SILVER OAKS BEHAVIORAL HOSPITAL	1004 PAWLAK PKWY	NAPERVILLE	60540
BRIDGES TO A NEW DAY	215 ROMEO RD	NEW LENOX	IL 60451
NAMI OF WILL GRUNDY	417 TAYLOR ST	ROMEONVILLE	IL
ROSECRANCE HEALTH NETWORK	20635 ABBEY WOODS CT	JOLIET	IL

CHILD/ADOLESCENT CARE

CHILD AND FAMILY CONNECTIONS	1740 W. MCDONOUGH ST	JOIET	IL
CHILD CARE RESOURCE AND REFERRAL	801 LARKIN AVE	JOLIET	IL 60435
C.W. AVERY YMCA	15120 W WALLIN DR	PLAINFIELD	IL
GREATER JOLIET AREA YMCA			
ILLINOIS DEPARTMENT OF CHILD AND FAMILY SERVICES	1619 JEFFERSON ST	JOLIET	IL
J.F. HOLDER FOUNDATION	16525 159TH ST	LOCKPORT	IL
WARREN-SHARPE COMMUNITY CENTER	454 JOLIET ST	JOLIET	IL
BRIGGS YMCA	1350 BRIGGS ST	JOLIET	IL
GALOWICH YMCA	749 HOUBOLT RD	JOLIET	IL
JTHS YESS PROGRAM	300 CATERPILLAR DR	JOLIET	IL
AUNT MARTHA'S YOUTH CENTER	333 MADISON ST	JOLIET	IL
JOLIET ALLIANCE FOR YOUTH	54 OTTAWA ST	JOLIET	IL

SENIOR SERVICES

SENIOR SERVICES CENTER OF WILL COUNTY	251 CENTER ST	JOLIET	IL 60435
AGENCY ON AGING IN NORTHEASTERN ILLINOIS	1910 HIGHLAND AVE	LOMBARD	IL

VETERAN SERVICES

VNA HEALTH CARE	2400 GLENWOOD AVE	JOLIET	IL
WILL COUNTY VETERANS ASSISTANCE COMMISSION	2400 GLENWOOD AVE	JOLIET	IL

VETERAN EMPLOYMENT/IDES	250 N CHICAGO ST	JOLIET	IL
LAW ENFORCEMENT			
WILL COUNTY ADULT DETENTION CENTER	95 S CHICAGO ST	JOLIET	IL
WILL COUNTY SHERRIFS OFFICE	16911 LARAWAY RD	JOLIET	IL
MOKENA POLICE DEPARTMENT	10907 FRONT ST	MOKENA	IL 60448
JOLIET POLICE DEPARTMENT	150 WASHINGTON ST	JOLIET	IL
LOCKPORT POLICE DEPARTMENT	1212 FARREL RD	LOCKPORT	IL
ORLAND PARK POLICE DEPARTMENT	15100 RAVINIA AVE	ORLAND PARK	IL
FIRE DEPARTMENT			
BOLINGBROOK FIRE DEPARTMENT	375 BRIARCLIFF RD	BOLINGBROOK	IL
JOLIET FIRE DEPARTMENT	101 E CLINTON ST	JOLIET	IL
FAITH BASED ORGANIZATIONS			
CATHOLIC CHARITIES DIOCES OF JOLIET	16555 WEBER RD	CREST HILL	IL
COMMUNITY LIFE MINISTRIES	156 JOLIET ST	JOLIET	IL
MT. ZION BAPTIST CHURCH	402 SINGLETON PL	JOLIET	IL
NEW LIFE CHURCH	500 GOUGAR RD	NEW LENOX	IL 60451
SECOND PLACE CHURCH	156 JOLIET ST	JOLIET	IL
COMMUNITY CHRISTIAN CHURCH	24035 RIVERWALK CT	PLAINFIELD	IL
FIRST ASSEMBLY OF GOD	1741 ESSINGTON RD	JOLIET	IL
DISABILITY SERVICES			
DISABILITY RESOURCE CENTER	77 N. 129TH INFANTRY DRIVE	JOLIET	IL 60435
EASTERSEALS JOLIET	212 BARNEY DR	JOLIET	IL
WISHING WELL OF FRANKFORT	9610 W MANHATTAN MONEE RD	FRANKFORT	IL 60423
LGBTQIA ORGANIZATIONS			
COMMUNITY ALLIANCE AND ACTION NETWORK	68 N CHICAGO ST	JOLIET	IL 60432
PARK DISTRICTS			
CHANNAHON PARK DISTRICT	24856 EAMES ST	CHANNAHON	IL 60410
FOREST PARK CENTER	1017 WOODRUFF RD	JOLIET	IL 60432
WILL COUNTY FOREST PRESERVE DISTRICT	17540 LARAWAY RD	JOLIET	IL 60433
JOLIET PARK DISTRICT	3000 JEFFERSON ST	JOLIET	IL 60435
NUTRITION/DIETARY ORGANIZATIONS			

FOOD ALLERGY RESEARCH AND EDUCATION	7901 JONES BRANCH DR	MCLEAN	VA
NORTHERN ILLINOIS FOOD BANK	273 DEARBORN CT	GENEVA	IL
LOAVES AND FISHES	556 5TH AVE	NAPERVILLE	IL
COMMUNITY OUTREACH ORGANIZATIONS			
GUARDIAN ANGEL GROUP	168 N OTTAWA ST	JOLIET	IL
BLUESTEM EARTH FESTIVAL	500 WILCOX ST	JOLIET	IL
SENIORS SERVICES FAIR	1741 ESSINGTON RD	JOLIET	IL
THE COMMUNITY FOUNDATION OF WILL COUNTY	701 ESSINGTON RD	JOLIET	IL 60435
UNITED WAY OF WILL COUNTY	54 N OTTAWA ST	JOLIET	IL 60432
WILL COUNTY CENTER FOR COMMUNITY CONCERNS	2455 GLENWOOD AVE	JOLIET	IL
WILL COUNTY RESIDENTS			
NATIONAL HOOK UP OF BLACK WOMEN	1705 RICHARDS ST	JOLIET	IL
BRAIDWOOD AREA HEALTHY COMMUNITY COALITION	465 REED ST	BRAIDWOOD	IL 60408
SILVER CROSS HEALTH COMMUNITY COALITION	1900 SILVER CROSS BLVD	NEW LENOX	IL 60451
SPANISH COMMUNITY CENTER	309 EASTERN	JOLIET	IL
NEW LENOX SAFE COMMUNITIES COALITION	1 VETERANS PARKWAY	NEW LENOX	IL 60451
EMERGENCY MANAGEMENT, PREPAREDNESS			
WILL COUNTY EMERGENCY MANAGEMENT AGENCY	302 N CHICAGO ST	JOLIET	IL 60432
WILL COUNTY MEDICAL RESERVE CORPS	501 ELLA AVE	JOLIET	IL 60433
TRANSPORTATION			
PACE SUBURBAN BUS	405 TAFT DR	SOUTH HOLLAND	IL
EZ AUTO	313 LARKIN AVE	JOLIET	IL
D'ARCY AUTO	2521 JEFFERSON ST	JOLIET	IL
HOUSING			
CORNERSTONE SERVICES	134 VAN BUREN ST	JOLIET	IL
EVERGREEN TERRACE APARTMENTS	350 BROADWAY ST	JOLIET	IL
RIVERWALK	350 BROADWAY ST	JOLIET	IL 60436
WILL COUNTY CENTER FOR COMMUNITY CONCERNS			
WILL COUNTY HOUSING AUTHORITY	6 BROADWAY ST	JOLIET	IL 60436
COLDWELL BANKER RESIDENTIAL	1922 LAGRANGE RD	MOKENA	IL 60448
EMPLOYMENT SECURITY			

ILLINOIS DEPARTMENT OF EMPLOYMENT SECURITY	250 CHICAGO ST	JOLIET	IL
ENERGY RESOURCE ORGANIZATIONS			
CITGO PETROLEUM CORP	3737 CICERO AVE	CICERO	IL
GEOGRAHICAL AND SOFTWARE ORGANIZATIONS			
WILL COUNTY GIS	302 N CHICAGO ST	JOLIET	IL 60432
TEC SERVICES CONSULTING, INC.	1620 PEBBLEWOOD LN	NAPERVILLE	IL 60563
ILLINOIS PUBLIC HEALTH INSTITUTE	310 PEORIA ST	CHICAGO	IL 60607
WILL COUNTY IT	302 N CHICAGO ST	JOLIET	IL 60432
EDUCATIONAL ORGANIZATIONS			
JOLIET JUNIOR COLLEGE	1215 HOUBOLT RD	JOLIET	IL
JOLIET PUBLIC SCHOOL DISTRICT	420 RAYNOR AVE	JOLIET	IL
JOLIET TOWNSHIP HIGH SCHOOL DISTRICT 204	300 CATERPILLAR DR	JOLIET	IL 60436
LEWIS UNIVERSITY	1 UNIVERSITY PARKWAY	ROMEDEVILLE	IL
RASMUSSEN COLLEGE	8650 SPRING LAKE ROAD	MOKENA	IL 60448
UNIVERSITY OF ST. FRANCIS	500 WILCOX ST	JOLIET	IL
GOVERNORS STATE UNIVERSITY	1 UNIVERSITY PARKWAY	UNIVERSITY PARK	IL
BOLINGBROOK HIGH SCHOOL DISTRICT	365 RAIDER WAY	BOLINGBROO K	IL
UNIVERSITY OF ILLINOIS EXTENSION	100 MANHATTAN RD	JOLIET	IL
VALLEY VIEW SCHOOL DISTRICT 365U	801 NORMANTOWN RD	ROMEDEVILLE	IL
COUNTY BOARD/EXECUTIVE/ADMINISTRATIVE ORGANIZATIONS			
WILL COUNTY BOARD	302 N CHICAGO ST	JOLIET	IL 60432
WILL COUNTY BOARD OF HEALTH	501 ELLA AVENUE	JOLIET	IL 60433
JOLIET TOWNSHIP GOVERNMENT	175 W JEFFERSON	JOLIET	IL 60433
WILL COUNTY CIRCUIT CLERK	14 W JEFFERSON	JOLIET	IL 60432
WILL COUNTY LAND USE	58 E Clinton	JOLIET	IL 60432
WILL COUNTY EXECUTIVES OFFICE	302 N CHICAGO ST	JOLIET	IL 60432
HEALTHCARE ORGANIZATIONS			
AMITA HEALTH ADVENTIST CENTER BOLINGBROOK	500 REMINGTON BLVD	BOLINGBROO K	IL
AMITA HEALTH ST. JOSEPH MEDICAL CENTER JOLIET	333 MADISON ST	JOLIET	IL
EDWARD-ELMHURST HEALTH	755 N YORK ST	ELMHURST	IL 60126

FRANCISCAN COMMUNITIES INC, MARIAN VILLAGE	15624 MARIAN DR	HOMER GLEN	IL 60491
GLENWOOD REHAB CENTER	19330 COTTAGE GROVE AVE	GLENWOOD	IL 60425
HERITAGE WOODS OF PLAINFIELD	14731 VAN DYKE RD	PLAINFIELD	IL 60544
LAKWOOD NURSING CENTER	14716 EASTERN AVE	PLAINFIELD	IL 60544
PRESENCE HOME CARE	1060 ESSINGTON RD	JOLIET	IL
PT SOLUTIONS PHYSICAL THERAPY	2943 JEFFERSON ST	JOLIET	IL 60435
SILVER CROSS HOSPITAL	1900 SILVER CROSS BLVD	NEW LENOX	IL 60451
WILL COUNTY COMMUNITY HEALTH CENTER	1106 NEAL	JOLIET	IL 60433
WILL COUNTY HEALTH DEPARTMENT	501 ELLA AVE	JOLIET	IL 60433
WILL GRUNDY MEDICAL CENTER	213 CASS ST	JOLIET	IL 60432
ADVOCATE HEALTH CARE	100 BATSON CT	NEW LENOX	IL 60451
BUDS AMBULANCE	2313 OAK LEAF ST	JOLIET	IL 60436
DALEY AMBULANCE	2313 OAK LEAF ST	JOLIET	IL 60436
ADVENTIST MEDICAL CENTER	15720 ROUTE 59	PLAINFIELD	IL 60544
AUNT MARTHA'S CLINIC	1200 EAGLE ST	JOLIET	IL 60432
AMERICAN HEART ASSOCIATION	208 La Salle ST	Chicago	IL 60404

2019 Local Public Health System Assessment (LPHSA)

Please note this assessment will take approximately 10-15 minutes to complete. This survey encompasses the Local Public Health System Assessment (LPHSA). Each part has several sections. We value your time and input. We thank you in advance for making time to complete this assessment electronically in lieu of an in-person meeting.

The **Local Public Health System Assessment (LPHSA)** is used to understand the overall strengths and weaknesses of the public health system. Please note the public health system refers to any entity or organization that effect the health and quality of life for persons in Will County. It is not only those that are direct health providers such as hospitals, clinics, and the health department. The system also includes social service agencies, schools, government, faith institutions, and so forth. This assessment has two sections: reviewing the Essential Public Health Services and Health Equity.

For each of the 10 Essential Public Health Services, you will be asked to review the model standard prompt to rate whether you think the public health system in Will County is performing at the following level:

- **Optimal (76-100%):** The public health system is doing absolutely everything possible for this activity and there is no room for improvement
- **Significant (51-75%):** The public health system participate a great deal in this activity and these is opportunity for minor improvement
- **Moderate (25-50%):** The public health system somewhat participates in this activity and there is opportunity for greater improvement
- **Minimal (1-25%):** The public health system provides limited activity and there is opportunity for substantial improvement
- **No Activity (0%):** The public health system does not participate in this activity at all

The **10 Essential Public Health Services (EHS)** are as follows:

1. Monitor health status to identify community health problems
2. Diagnose and investigate health problems and health hazards in the community
3. Inform, educate, and empower people about health issues
4. Mobilize community partnerships to identify and solve health problems
5. Develop policies and plans that support individual and community health efforts
6. Enforce laws and regulations that protect health and ensure safety
7. Link people to needed health services and assure the provision of health care when otherwise unavailable
8. Assure a competent public health and personal health care workforce
9. Evaluate effectiveness, accessibility, and quality of personal and population-based health services
10. Research for new insights and innovative solutions to health problems

During the LPHSA, you will answer the following questions:

- 1) What are the activities, competencies, and capacities of the local public health system?
- 2) How are the 10 Essential Public Health Services being provided to the community?

1. Please choose an essential health service (EHS) that aligns with your job duties within the local public health system.

- Monitor health status to identify community health problems
- Diagnose and investigate health problems and health hazards in the community
- Inform, educate, and empower people about health issues
- Mobilize community partnerships to identify and solve health problems
- Develop policies and plans that support individual and community health efforts
- Enforce laws and regulations that protect health and ensure safety
- Link people to needed personal health services and assure the provision of health care when otherwise unavailable
- Assure a competent public health and personal health care workforce
- Evaluate effectiveness, accessibility, and quality of personal and population-based health services
- Research for new insights and innovative solutions to health problems

EHS #1: Monitor Health Status to Identify Community Health Problems

What is going on in our community? Do we know how healthy we are?

Please rate whether you think the public health system in Will County is performing at the following level:

Optimal (76-100%): The public health system is doing absolutely everything possible for this activity and there is no room for improvement

Significant (51-75%): The public health system participate a great deal in this activity and these is opportunity for minor improvement

Moderate (25-50%): The public health system somewhat participates in this activity and there is opportunity for greater improvement

Minimal (1-25%): The public health system provides limited activity and there is opportunity for substantial improvement

No Activity (0%): The public health system does not participate in this activity at all

At what level does the Local Public Health System...

2. Conduct regular community health assessments to analyze health data including geographic information to see where the problems exist?

No Activity (0%)

Significant (51-75%)

Minimal (1-25%)

Optimal (76-100%)

Moderate (25-50%)

Please comment below to clarify your answer, if needed

3. Promote the use of the community health assessment among community members and partners?

No Activity (0%)

Significant (51-75%)

Minimal (1-25%)

Optimal (76-100%)

Moderate (25-50%)

Please comment below to clarify your answer, if needed

4. Use the best available technology and methods to display public health data?

- No Activity (0%) Significant (51-75%)
 Minimal (1-25%) Optimal (76-100%)
 Moderate (25-50%)

Please comment below to clarify your answer, if needed

5. Analyze health data, including geographic information, to see where health problems exist?

- No Activity (0%) Significant (51-75%)
 Minimal (1-25%) Optimal (76-100%)
 Moderate (25-50%)

Please comment below to clarify your answer, if needed

6. Please choose an **additional** essential health service (EHS) that aligns with your job duties within the local public health system. If there are no other services that align, please select N/A.

- Monitor health status to identify community health problems Link people to needed personal health services and assure the provision of health care when otherwise unavailable
 Diagnose and investigate health problems and health hazards in the community Assure a competent public health and personal health care workforce
 Inform, educate, and empower people about health issues Evaluate effectiveness, accessibility, and quality of personal and population-based health services
 Mobilize community partnerships to identify and solve health problems Research for new insights and innovative solutions to health problems
 Develop policies and plans that support individual and community health efforts N/A
 Enforce laws and regulations that protect health and ensure safety

EHS #2: Diagnose and Investigate Health Problems and Health Hazards in the Community

Are we ready to respond to health problems or hazards in our county? How quickly do we find out about problems? How effective is our response?

Please rate whether you think the public health system in Will County is performing at the following level:

Optimal (76-100%): The public health system is doing absolutely everything possible for this activity and there is no room for improvement

Significant (51-75%): The public health system participate a great deal in this activity and these is opportunity for minor improvement

Moderate (25-50%): The public health system somewhat participates in this activity and there is opportunity for greater improvement

Minimal (1-25%): The public health system provides limited activity and there is opportunity for substantial improvement

No Activity (0%): The public health system does not participate in this activity at all

At what level does the Local Public Health System...

7. Participate in a comprehensive surveillance system with national, state, and local partners to identify, monitor and share information and understand emerging health problems and threats?

No Activity (0%)

Significant (51-75%)

Minimal (1-25%)

Optimal (76-100%)

Moderate (25-50%)

Please comment below to clarify your answer, if needed

8. Provide and collect timely and complete information on reportable diseases and potential disasters, emergencies, and emerging threats?

No Activity (0%)

Significant (51-75%)

Minimal (1-25%)

Optimal (76-100%)

Moderate (25-50%)

Please comment below to clarify your answer, if needed

9. Prepare to rapidly respond to public health emergencies according to guidelines?

- No Activity (0%) Significant (51-75%)
 Minimal (1-25%) Optimal (76-100%)
 Moderate (25-50%)

Please comment below to clarify your answer, if needed

10. Evaluate incidents for effectiveness and opportunities for improvement?

- No Activity (0%) Significant (51-75%)
 Minimal (1-25%) Optimal (76-100%)
 Moderate (25-50%)

Please comment below to clarify your answer, if needed

11. Have access to laboratories that can meet with routine and emergency public health needs?

- No Activity (0%) Significant (51-75%)
 Minimal (1-25%) Optimal (76-100%)
 Moderate (25-50%)

Please comment below to clarify your answer, if needed

12. Please choose an **additional** essential health service (EHS) that aligns with your job duties within the local public health system. If there are no other services that align, please select N/A to go to the Health Equity section.

- Monitor health status to identify community health problems Link people to needed personal health services and assure the provision of health care when otherwise unavailable
 Diagnose and investigate health problems and health hazards in the community Assure a competent public health and personal health care workforce
 Inform, educate, and empower people about health issues Evaluate effectiveness, accessibility, and quality of personal and population-based health services
 Mobilize community partnerships to identify and solve health problems Research for new insights and innovative solutions to health problems
 Develop policies and plans that support individual and community health efforts N/A
 Enforce laws and regulations that protect health and ensure safety

EHS #3: Inform, Educate, and Empower People about Health Issues

How well do we keep all segments of our community informed about health issues?

Please rate whether you think the public health system in Will County is performing at the following level:

Optimal (76-100%): The public health system is doing absolutely everything possible for this activity and there is no room for improvement

Significant (51-75%): The public health system participate a great deal in this activity and these is opportunity for minor improvement

Moderate (25-50%): The public health system somewhat participates in this activity and there is opportunity for greater improvement

Minimal (1-25%): The public health system provides limited activity and there is opportunity for substantial improvement

No Activity (0%): The public health system does not participate in this activity at all

At what level does the Local Public Health System...

13. Provide policymakers, stakeholders, and the public with ongoing analyses of community health status and related recommendations for health promotion policies?

No Activity (0%)

Significant (51-75%)

Minimal (1-25%)

Optimal (76-100%)

Moderate (25-50%)

Please comment below to clarify your answer, if needed

14. Engage the community in the process of setting priorities, developing plans and implementation of health education and promotion activities?

No Activity (0%)

Significant (51-75%)

Minimal (1-25%)

Optimal (76-100%)

Moderate (25-50%)

Please comment below to clarify your answer, if needed

15. Use different media providers (print, television, internet, etc.) to share health information?

- No Activity (0%) Significant (51-75%)
 Minimal (1-25%) Optimal (76-100%)
 Moderate (25-50%)

Please comment below to clarify your answer, if needed

16. Develop an emergency communications plan for emergencies to allow for effective dissemination of information?

- No Activity (0%) Significant (51-75%)
 Minimal (1-25%) Optimal (76-100%)
 Moderate (25-50%)

Please comment below to clarify your answer, if needed

17. Please choose an **additional** essential health service (EHS) that aligns with your job duties within the local public health system. If there are no other services that align, please select N/A to go to the Health Equity section.

- Monitor health status to identify community health problems Link people to needed personal health services and assure the provision of health care when otherwise unavailable
 Diagnose and investigate health problems and health hazards in the community Assure a competent public health and personal health care workforce
 Inform, educate, and empower people about health issues Evaluate effectiveness, accessibility, and quality of personal and population-based health services
 Mobilize community partnerships to identify and solve health problems Research for new insights and innovative solutions to health problems
 Develop policies and plans that support individual and community health efforts N/A
 Enforce laws and regulations that protect health and ensure safety

EHS #4: Mobilize Community Partnerships to Identify and Solve Health Problems

How well do we truly engage people on local health issues?

Please rate whether you think the public health system in Will County is performing at the following level:

Optimal (76-100%): The public health system is doing absolutely everything possible for this activity and there is no room for improvement

Significant (51-75%): The public health system participate a great deal in this activity and these is opportunity for minor improvement

Moderate (25-50%): The public health system somewhat participates in this activity and there is opportunity for greater improvement

Minimal (1-25%): The public health system provides limited activity and there is opportunity for substantial improvement

No Activity (0%): The public health system does not participate in this activity at all

At what level does the Local Public Health System...

18. Encourage stakeholders to participate in activities to improve community health?

- No Activity (0%) Significant (51-75%)
 Minimal (1-25%) Optimal (76-100%)
 Moderate (25-50%)

Please comment below to clarify your answer, if needed

19. Establish community partnerships and strategic alliances to provide a comprehensive approach to improving health in the community?

- No Activity (0%) Significant (51-75%)
 Minimal (1-25%) Optimal (76-100%)
 Moderate (25-50%)

Please comment below to clarify your answer, if needed

20. Please choose an **additional** essential health service (EHS) that aligns with your job duties within the local public health system. If there are no other services that align, please select N/A to go to the Health Equity section.

- Monitor health status to identify community health problems
- Diagnose and investigate health problems and health hazards in the community
- Inform, educate, and empower people about health issues
- Mobilize community partnerships to identify and solve health problems
- Develop policies and plans that support individual and community health efforts
- Enforce laws and regulations that protect health and ensure safety
- Link people to needed personal health services and assure the provision of health care when otherwise unavailable
- Assure a competent public health and personal health care workforce
- Evaluate effectiveness, accessibility, and quality of personal and population-based health services
- Research for new insights and innovative solutions to health problems
- N/A

EHS #5: Develop Policies and Plans that Support Individual and Community Health Efforts

When we enforce health regulations, are we technically competent, fair, and effective?

Please rate whether you think the public health system in Will County is performing at the following level:

Optimal (76-100%): The public health system is doing absolutely everything possible for this activity and there is no room for improvement

Significant (51-75%): The public health system participate a great deal in this activity and these is opportunity for minor improvement

Moderate (25-50%): The public health system somewhat participates in this activity and there is opportunity for greater improvement

Minimal (1-25%): The public health system provides limited activity and there is opportunity for substantial improvement

No Activity (0%): The public health system does not participate in this activity at all

At what level does the Local Public Health System...

21. Ensure that the local public health department has enough resources to do its part?

No Activity (0%)

Significant (51-75%)

Minimal (1-25%)

Optimal (76-100%)

Moderate (25-50%)

Please comment below to clarify your answer, if needed

22. Alert policymakers and the community of the possible public health effects (bot intended and unintended) from current and/or proposed policies?

No Activity (0%)

Significant (51-75%)

Minimal (1-25%)

Optimal (76-100%)

Moderate (25-50%)

Please comment below to clarify your answer, if needed

23. Establish a Community Health Improvement Plan (CHIP) with board-based diverse participation, to develop strategies and accountability for organizations?

- No Activity (0%)
- Minimal (1-25%)
- Moderate (25-50%)
- Significant (51-75%)
- Optimal (76-100%)

Please comment below to clarify your answer, if needed

24. Develop an emergency preparedness and response plan that is tested through regular drills?

- No Activity (0%)
- Minimal (1-25%)
- Moderate (25-50%)
- Significant (51-75%)
- Optimal (76-100%)

Please comment below to clarify your answer, if needed

25. Please choose an **additional** essential health service (EHS) that aligns with your job duties within the local public health system. If there are no other services that align, please select N/A to go to the Health Equity section.

- Monitor health status to identify community health problems
- Diagnose and investigate health problems and health hazards in the community
- Inform, educate, and empower people about health issues
- Mobilize community partnerships to identify and solve health problems
- Develop policies and plans that support individual and community health efforts
- Enforce laws and regulations that protect health and ensure safety
- Link people to needed personal health services and assure the provision of health care when otherwise unavailable
- Assure a competent public health and personal health care workforce
- Evaluate effectiveness, accessibility, and quality of personal and population-based health services
- Research for new insights and innovative solutions to health problems
- N/A

EHS #6: Enforce Laws and Regulations that Protect Health and Ensure Safety

When we enforce health regulations, are we technically competent, fair and effective?

Please rate whether you think the public health system in Will County is performing at the following level:

Optimal (76-100%): The public health system is doing absolutely everything possible for this activity and there is no room for improvement

Significant (51-75%): The public health system participate a great deal in this activity and these is opportunity for minor improvement

Moderate (25-50%): The public health system somewhat participates in this activity and there is opportunity for greater improvement

Minimal (1-25%): The public health system provides limited activity and there is opportunity for substantial improvement

No Activity (0%): The public health system does not participate in this activity at all

At what level does the Local Public Health System...

26. Identify public health issues that can be addressed through new or amendments to current laws, regulations, or ordinances?

- | | |
|---|--|
| <input type="radio"/> No Activity (0%) | <input type="radio"/> Significant (51-75%) |
| <input type="radio"/> Minimal (1-25%) | <input type="radio"/> Optimal (76-100%) |
| <input type="radio"/> Moderate (25-50%) | |

Please comment below to clarify your answer, if needed

27. Review existing public health laws, regulations, or ordinances at least every 3-5 years?

- | | |
|---|--|
| <input type="radio"/> No Activity (0%) | <input type="radio"/> Significant (51-75%) |
| <input type="radio"/> Minimal (1-25%) | <input type="radio"/> Optimal (76-100%) |
| <input type="radio"/> Moderate (25-50%) | |

Please comment below to clarify your answer, if needed

28. Educate individuals and organizations about relevant laws, regulations, and ordinances?

- No Activity (0%) Significant (51-75%)
 Minimal (1-25%) Optimal (76-100%)
 Moderate (25-50%)

Please comment below to clarify your answer, if needed

29. Please choose an **additional** essential health service (EHS) that aligns with your job duties within the local public health system. If there are no other services that align, please select N/A to go to the Health Equity section.

- Monitor health status to identify community health problems Link people to needed personal health services and assure the provision of health care when otherwise unavailable
 Diagnose and investigate health problems and health hazards in the community Assure a competent public health and personal health care workforce
 Inform, educate, and empower people about health issues Evaluate effectiveness, accessibility, and quality of personal and population-based health services
 Mobilize community partnerships to identify and solve health problems Research for new insights and innovative solutions to health problems
 Develop policies and plans that support individual and community health efforts N/A
 Enforce laws and regulations that protect health and ensure safety

EHS #7: Link People to Needed Personal Health Services

Are people in my community receiving the health services they need?

Please rate whether you think the public health system in Will County is performing at the following level:

Optimal (76-100%): The public health system is doing absolutely everything possible for this activity and there is no room for improvement

Significant (51-75%): The public health system participate a great deal in this activity and these is opportunity for minor improvement

Moderate (25-50%): The public health system somewhat participates in this activity and there is opportunity for greater improvement

Minimal (1-25%): The public health system provides limited activity and there is opportunity for substantial improvement

No Activity (0%): The public health system does not participate in this activity at all

At what level does the Local Public Health System...

30. Identify groups of people in the community who have trouble accessing or connecting to personal health services?

- | | |
|---|--|
| <input type="radio"/> No Activity (0%) | <input type="radio"/> Significant (51-75%) |
| <input type="radio"/> Minimal (1-25%) | <input type="radio"/> Optimal (76-100%) |
| <input type="radio"/> Moderate (25-50%) | |

Please comment below to clarify your answer, if needed

31. Understand the reasons that people do not get the care they need?

- | | |
|---|--|
| <input type="radio"/> No Activity (0%) | <input type="radio"/> Significant (51-75%) |
| <input type="radio"/> Minimal (1-25%) | <input type="radio"/> Optimal (76-100%) |
| <input type="radio"/> Moderate (25-50%) | |

Please comment below to clarify your answer, if needed

32. Connect or link people to organizations that can provide personal health services they may need?

- | | |
|---|--|
| <input type="radio"/> No Activity (0%) | <input type="radio"/> Significant (51-75%) |
| <input type="radio"/> Minimal (1-25%) | <input type="radio"/> Optimal (76-100%) |
| <input type="radio"/> Moderate (25-50%) | |

Please comment below to clarify your answer, if needed

33. Please choose an **additional** essential health service (EHS) that aligns with your job duties within the local public health system. If there are no other services that align, please select N/A to go to the Health Equity section.

- | | |
|---|---|
| <input type="radio"/> Monitor health status to identify community health problems | <input type="radio"/> Link people to needed personal health services and assure the provision of health care when otherwise unavailable |
| <input type="radio"/> Diagnose and investigate health problems and health hazards in the community | <input type="radio"/> Assure a competent public health and personal health care workforce |
| <input type="radio"/> Inform, educate, and empower people about health issues | <input type="radio"/> Evaluate effectiveness, accessibility, and quality of personal and population-based health services |
| <input type="radio"/> Mobilize community partnerships to identify and solve health problems | <input type="radio"/> Research for new insights and innovative solutions to health problems |
| <input type="radio"/> Develop policies and plans that support individual and community health efforts | <input type="radio"/> N/A |
| <input type="radio"/> Enforce laws and regulations that protect health and ensure safety | |

EHS #8: Assure a Competent Public Health and Personal Health Care Workforce

Do we have a competent public health staff? DO we have a competent healthcare staff? How can we be sure that our staff stays current?

Please rate whether you think the public health system in Will County is performing at the following level:

Optimal (76-100%): The public health system is doing absolutely everything possible for this activity and there is no room for improvement

Significant (51-75%): The public health system participate a great deal in this activity and there is opportunity for minor improvement

Moderate (25-50%): The public health system somewhat participates in this activity and there is opportunity for greater improvement

Minimal (1-25%): The public health system provides limited activity and there is opportunity for substantial improvement

No Activity (0%): The public health system does not participate in this activity at all

At what level does the Local Public Health System...

34. Complete a workforce assessment to identify and address gaps in the local public health workforce?

No Activity (0%)

Significant (51-75%)

Minimal (1-25%)

Optimal (76-100%)

Moderate (25-50%)

Please comment below to clarify your answer, if needed

35. Ensure that all members of the local public health workforce have the required certificates, licenses, and education needed to fulfill their job duties and comply with legal requirements?

No Activity (0%)

Significant (51-75%)

Minimal (1-25%)

Optimal (76-100%)

Moderate (25-50%)

Please comment below to clarify your answer, if needed

36. Create and support collaboration among organizations for training and education?

- No Activity (0%) Significant (51-75%)
 Minimal (1-25%) Optimal (76-100%)
 Moderate (25-50%)

Please comment below to clarify your answer, if needed

37. Continually train the public health workforce to deliver services in a culturally competent manner and understand the social determinants of health?

- No Activity (0%) Significant (51-75%)
 Minimal (1-25%) Optimal (76-100%)
 Moderate (25-50%)

Please comment below to clarify your answer, if needed

38. Provide opportunities for the development of leaders who represent the diversity of the community?

- No Activity (0%) Significant (51-75%)
 Minimal (1-25%) Optimal (76-100%)
 Moderate (25-50%)

Please comment below to clarify your answer, if needed

39. Please choose an **additional** essential health service (EHS) that aligns with your job duties within the local public health system. If there are no other services that align, please select N/A to go to the Health Equity section.

- Monitor health status to identify community health problems Link people to needed personal health services and assure the provision of health care when otherwise unavailable
 Diagnose and investigate health problems and health hazards in the community Assure a competent public health and personal health care workforce
 Inform, educate, and empower people about health issues Evaluate effectiveness, accessibility, and quality of personal and population-based health services
 Mobilize community partnerships to identify and solve health problems Research for new insights and innovative solutions to health problems
 Develop policies and plans that support individual and community health efforts N/A
 Enforce laws and regulations that protect health and ensure safety

EHS #9: Evaluate Effectiveness, Accessibility, and Quality of Health Services

Are we meeting the needs of the population we serve? Are we doing things right? Are we doing the right things?

Please rate whether you think the public health system in Will County is performing at the following level:

Optimal (76-100%): The public health system is doing absolutely everything possible for this activity and there is no room for improvement

Significant (51-75%): The public health system participate a great deal in this activity and these is opportunity for minor improvement

Moderate (25-50%): The public health system somewhat participates in this activity and there is opportunity for greater improvement

Minimal (1-25%): The public health system provides limited activity and there is opportunity for substantial improvement

No Activity (0%): The public health system does not participate in this activity at all

At what level does the Local Public Health System...

40. Evaluate how well population-based health services are working?

- | | |
|---|--|
| <input type="radio"/> No Activity (0%) | <input type="radio"/> Significant (51-75%) |
| <input type="radio"/> Minimal (1-25%) | <input type="radio"/> Optimal (76-100%) |
| <input type="radio"/> Moderate (25-50%) | |

Please comment below to clarify your answer, if needed

41. Evaluate the accessibility, quality, and effectiveness of personal health services?

- | | |
|---|--|
| <input type="radio"/> No Activity (0%) | <input type="radio"/> Significant (51-75%) |
| <input type="radio"/> Minimal (1-25%) | <input type="radio"/> Optimal (76-100%) |
| <input type="radio"/> Moderate (25-50%) | |

Please comment below to clarify your answer, if needed

42. Measure user satisfaction with personal health services?

- No Activity (0%)
- Minimal (1-25%)
- Moderate (25-50%)
- Significant (51-75%)
- Optimal (76-100%)

Please comment below to clarify your answer, if needed

43. Use technology to improve quality of care?

- No Activity (0%)
- Minimal (1-25%)
- Moderate (25-50%)
- Significant (51-75%)
- Optimal (76-100%)

Please comment below to clarify your answer, if needed

44. Please choose an **additional** essential health service (EHS) that aligns with your job duties within the local public health system. If there are no other services that align, please select N/A to go to the Health Equity section.

- Monitor health status to identify community health problems
- Diagnose and investigate health problems and health hazards in the community
- Inform, educate, and empower people about health issues
- Mobilize community partnerships to identify and solve health problems
- Develop policies and plans that support individual and community health efforts
- Enforce laws and regulations that protect health and ensure safety
- Link people to needed personal health services and assure the provision of health care when otherwise unavailable
- Assure a competent public health and personal health care workforce
- Evaluate effectiveness, accessibility, and quality of personal and population-based health services
- Research for new insights and innovative solutions to health problems
- N/A

EHS #10: Research for New Insights and Innovative Solutions to Health Problems

Are we discovering and using new ways to get the job done?

Please rate whether you think the public health system in Will County is performing at the following level:

Optimal (76-100%): The public health system is doing absolutely everything possible for this activity and there is no room for improvement

Significant (51-75%): The public health system participate a great deal in this activity and these is opportunity for minor improvement

Moderate (25-50%): The public health system somewhat participates in this activity and there is opportunity for greater improvement

Minimal (1-25%): The public health system provides limited activity and there is opportunity for substantial improvement

No Activity (0%): The public health system does not participate in this activity at all

At what level does the Local Public Health System...

45. Keep up with information from other agencies and organizations at the local, state, and national levels about current best practices in public health?

No Activity (0%)

Significant (51-75%)

Minimal (1-25%)

Optimal (76-100%)

Moderate (25-50%)

Please comment below to clarify your answer, if needed

46. Encourage colleges, universities, and other research organizations to work together with the local public health system organizations to develop projects?

No Activity (0%)

Significant (51-75%)

Minimal (1-25%)

Optimal (76-100%)

Moderate (25-50%)

Please comment below to clarify your answer, if needed

47. Please choose an **additional** essential health service (EHS) that aligns with your job duties within the local public health system. If there are no other services that align, please select N/A to go to the Health Equity section.

- Monitor health status to identify community health problems
- Diagnose and investigate health problems and health hazards in the community
- Inform, educate, and empower people about health issues
- Mobilize community partnerships to identify and solve health problems
- Develop policies and plans that support individual and community health efforts
- Enforce laws and regulations that protect health and ensure safety
- Link people to needed personal health services and assure the provision of health care when otherwise unavailable
- Assure a competent public health and personal health care workforce
- Evaluate effectiveness, accessibility, and quality of personal and population-based health services
- Research for new insights and innovative solutions to health problems
- N/A

Health Equity

How well is the Local Public Health System acknowledging and addressing health inequities?

Please rate whether you think the public health system in Will County is performing at the following level:

Optimal (76-100%): The public health system is doing absolutely everything possible for this activity and there is no room for improvement

Significant (51-75%): The public health system participate a great deal in this activity and these is opportunity for minor improvement

Moderate (25-50%): The public health system somewhat participates in this activity and there is opportunity for greater improvement

Minimal (1-25%): The public health system provides limited activity and there is opportunity for substantial improvement

No Activity (0%): The public health system does not participate in this activity at all

At what level does the Local Public Health System...

48. Conduct a community health assessment that includes indicators (data) intended to monitor differences in health and wellness across populations according to race, ethnicity, age, income, immigration status, sexual identity, education, gender, and neighborhood (zip code)?

- No Activity (0%) Significant (51-75%)
 Minimal (1-25%) Optimal (76-100%)
 Moderate (25-50%)

Please comment below to clarify your answer, if needed

49. Operate or participate in surveillance systems designed to monitor health inequities and identify the social determinants of health inequities specific to its communities?

- No Activity (0%) Significant (51-75%)
 Minimal (1-25%) Optimal (76-100%)
 Moderate (25-50%)

Please comment below to clarify your answer, if needed

50. Provide information about community health status (e.g. heart disease, cancer rates, and environmental risks) and community health needs in the context of health inequity and social justice?

- No Activity (0%) Significant (51-75%)
 Minimal (1-25%) Optimal (76-100%)
 Moderate (25-50%)

Please comment below to clarify your answer, if needed

51. Work to influence laws, policies, and practices that maintain inequitable distribution of resources that may influence access to personal health services?

- No Activity (0%) Significant (51-75%)
 Minimal (1-25%) Optimal (76-100%)
 Moderate (25-50%)

Please comment below to clarify your answer, if needed

52. Recruit and train staff members to reflect the community they serve?

- No Activity (0%) Significant (51-75%)
 Minimal (1-25%) Optimal (76-100%)
 Moderate (25-50%)

Please comment below to clarify your answer, if needed

Thank You!

Thank you for completing this assessment! Your feedback is appreciated. For more information on the Will County MAPP Collaborative, please visit www.willcountymapp.org

Please fill out your contact information below. Your results will remain anonymous. Please click **Done** to submit the survey.

* 53. Please provide your contact information:

Name

Job Title

Program

Organization

Email Address

Phone Number

Introduccion

Gracias por tomarse el tiempo para completar esta encuesta comunitaria para el condado de Will. El proposito de esta encuesta es reunir sus pensamientos sobre la salud y la calidad de vida en nuestra comunidad. Sus Comentarios se utilizaran para desarrollar un plan para mejorar el sistema de salud publica del condado y la salud de los residentes como usted.

Esta encuesta es para los residentes del condado de Will. Por favor lea las preguntas cuidadosamente y responda lo mejor que pueda. Tenga en cuenta que sus opciones son confidenciales y no se pueden vincular a usted de ninguna manera. Esta encuesta toma aproximadamente 15 minutos para completar.

* 1. ¿Vives en el condado de Will?

Si

No

2. Que condigo postal vives en el condado de Will?

60503 (Aurora)

60431 (Joliet)

60466 (Park Forest)

60401 (Beecher)

60432 (Joliet)

60468 (Peotone)

60440 (Bolingbrook)

60433 (Joliet)

60544 (Plainfield)

60490 (Bolingbrook)

60435 (Joliet)

60586 (Plainfield)

60408 (Braidwood)

60436 (Joliet)

60585 (Plainfield)

60410 (Channahon)

60441 (Lockport)

60446 (Romeoville)

60403 (Crest Hill)

60442 (Manhattan)

60404 (Shorewood)

60417 (Crete)

60448 (Mokena)

60475 (Steger)

60421 (Elwood)

60449 (Monee)

60481 (Wilmington)

60423 (Frankfort)

60564 (Naperville)

60484 (University Park)

60491 (Homer Glen)

60451 (New Lenox)

Other (please specify)

Part II: Información general

Información general Lea atentamente las siguientes preguntas para responder lo mejor que pueda. Tenga en cuenta que sus opciones son confidenciales y no se pueden vincular a usted de ninguna manera.

3. Rango de edad?

- 0-17 años
- 18-24 años
- 25-34 años
- 35-44 años
- 45-54 años
- 55-64 años
- 65 años o más

4. ¿El sexo con el que te identificas?

- Masculino
- Mujer
- Otro (please specify)

5. ¿Carrera con la que te identificas?

- Asian
- Black
- Native American/Alaskan Native
- Native Hawaiian/Pacific Islander
- White
- Other (please specify)

6. ¿Con qué etnicidad te identificas?

- Hispana
- Non-Hispana

7. ¿Cuál es el idioma principal que se habla en su hogar?

- Ingles
- Polaco
- Espanol
- Tagalo
- Otro (please specify)

8. ¿Cuánto tiempo has vivido en el condado de Will?

- 0-5 anos
- 6-10 anos
- 11-15 anos
- 15 anos o mas

9. ¿Estado civil?

- Soltero
- Casado/Union civil
- Separados/Divorciado
- Viuda

10. ¿El nivel más alto de educación?

- Menos de 9th grado
- Alguna escuela secundaria
- Graduado de secundaria
- Algunos universitarios
- Grado asociado
- Licenciatura
- Graduado de Maestria o mas
- Otro (please specify)

11. ¿Ingreso anual del hogar?

- Menos de \$10,000
- \$10,000 a \$14,999
- \$15,000 a \$24,999
- \$25,000 a \$34,999
- \$35,000 a \$49,999
- \$50,000 a \$74,999
- \$75,000 a \$99,999
- \$100,000 a \$149,999
- \$150,000 a \$199,999
- \$200,000 o mas
- No se

12. ¿Cuántos dependientes viven en el hogar?

- 1
- 2
- 3
- 4 o mas

13. ¿Vives en una vivienda con múltiples familias?

- Si
- No
- No Se

14. ¿Eres propietario o alquilas tu casa?

- propio
- alquiler
- No Se

15. Do you own a smart phone and/or tablet?

- Si
- No
- No Se

16. Have you taken a foreign trip(s) in the past year?

- Si
- No
- No Se

Part III: Calidad de Vida

Lo siguiente hace preguntas sobre la "calidad de vida" en nuestra comunidad. Al completar esta sección, tenga en cuenta que la calidad de vida se define como su satisfacción personal / felicidad (o insatisfacción / infelicidad) con las condiciones en las que vive.

17. Marque la casilla que mas se asemeje a su opinion.

Excelente

Muy Buena

Buena

Regular

Pobre

¿Cómo califica la calidad de vida en general en el condado de Will? (Consider items such as your safety, well-being, and participation in community life)

¿Cómo calificaría la calidad general del medio ambiente en el condado? (Consider items such as indoor/outdoor air, land, and water)

¿Cómo calificaría la calidad del sistema de salud en el condado? (Consider items such as access, cost, availability, and options in health care)

¿Cómo calificaría al condado como un lugar para criar hijos? (Consider items such as school quality, day care, after school programs, and recreation)

¿Cómo calificaría al condado como un lugar para envejecer? (Consider items such as elder-friendly housing, transportation to medical services, shopping, elder day care, social support for the elderly living alone, Meals on Wheels)

¿Cómo calificaría al condado como una comunidad segura? (Consider items such as safety in the home, schools, the workplace, playgrounds, and parks. Do neighbors know and trust each other? Do they look out for each other?)

18. Por favor, enumere más comentarios y preocupaciones?

19. Marque la casilla que mas se asemeje a su opinion. Tenga en cuenta que sus opciones son confidenciales y no se pueden vincular a usted de ninguna manera.

	Siempre	La mayor parte del tiempo	a veces	Raramente	Nunca
Tengo suficiente dinero para pagar las cosas que realmente necesitan, como ropa, vivienda, comida, medicina.	<input type="radio"/>	<input type="radio"/>	<input type="radio"/>	<input type="radio"/>	<input type="radio"/>
Tengo personas con las que puedo compartir problemas o recibir ayuda cuando sea necesario.	<input type="radio"/>	<input type="radio"/>	<input type="radio"/>	<input type="radio"/>	<input type="radio"/>
En el último año, pude obtener los servicios de salud que necesitaba.	<input type="radio"/>	<input type="radio"/>	<input type="radio"/>	<input type="radio"/>	<input type="radio"/>
Hay suficientes puestos de trabajo en el condado de Will.	<input type="radio"/>	<input type="radio"/>	<input type="radio"/>	<input type="radio"/>	<input type="radio"/>
Las personas trabajan juntas para hacer cosas por la comunidad.	<input type="radio"/>	<input type="radio"/>	<input type="radio"/>	<input type="radio"/>	<input type="radio"/>
Tengo un sentido de orgullo comunitario.	<input type="radio"/>	<input type="radio"/>	<input type="radio"/>	<input type="radio"/>	<input type="radio"/>
Tengo un sentido de responsabilidad para ayudar a mejorar la salud de mi comunidad.	<input type="radio"/>	<input type="radio"/>	<input type="radio"/>	<input type="radio"/>	<input type="radio"/>
En el último año, no me ha preocupado experimentar un trato injusto debido a mi raza, etnia o color.	<input type="radio"/>	<input type="radio"/>	<input type="radio"/>	<input type="radio"/>	<input type="radio"/>

20. Por favor, enumere más comentarios y preocupaciones

21. ¿Ha experimentado discriminación, se le ha impedido hacer algo, se le ha molestado o se le ha hecho sentirse inferior en alguna de las siguientes situaciones debido a su raza, origen étnico o color?

	4 o mas veces	2 o 3 veces	1 vez	Nunca
¿En la escuela?	<input type="radio"/>	<input type="radio"/>	<input type="radio"/>	<input type="radio"/>
¿Ser contratado o conseguir un trabajo?	<input type="radio"/>	<input type="radio"/>	<input type="radio"/>	<input type="radio"/>
¿En el trabajo?	<input type="radio"/>	<input type="radio"/>	<input type="radio"/>	<input type="radio"/>
Conseguir vivienda?	<input type="radio"/>	<input type="radio"/>	<input type="radio"/>	<input type="radio"/>
¿Recibiendo atención médica?	<input type="radio"/>	<input type="radio"/>	<input type="radio"/>	<input type="radio"/>
¿Obtener servicio en una tienda o restaurante?	<input type="radio"/>	<input type="radio"/>	<input type="radio"/>	<input type="radio"/>
Obtención de crédito, préstamos bancarios, o hipotecas?	<input type="radio"/>	<input type="radio"/>	<input type="radio"/>	<input type="radio"/>
¿En la calle o en un entorno público?	<input type="radio"/>	<input type="radio"/>	<input type="radio"/>	<input type="radio"/>
¿De la policía o en el juzgado?	<input type="radio"/>	<input type="radio"/>	<input type="radio"/>	<input type="radio"/>

22. Proporcione comentarios adicionales.

39. ¿Los residentes encuentran importancia en los valores religiosos o espirituales?

	Siempre	La mayoría de las veces	A veces	Raramente	Nunca	N/A or No se
...En su casa	<input type="radio"/>	<input type="radio"/>	<input type="radio"/>	<input type="radio"/>	<input type="radio"/>	<input type="radio"/>
...En su vecindario/comunidad	<input type="radio"/>	<input type="radio"/>	<input type="radio"/>	<input type="radio"/>	<input type="radio"/>	<input type="radio"/>
...En el condado de Will	<input type="radio"/>	<input type="radio"/>	<input type="radio"/>	<input type="radio"/>	<input type="radio"/>	<input type="radio"/>

40. ¿Los residentes sienten que viven en un barrio seguro?

	Siempre	La mayoría de las veces	A veces	Raramente	Nunca	N/A or No se
...En su casa	<input type="radio"/>	<input type="radio"/>	<input type="radio"/>	<input type="radio"/>	<input type="radio"/>	<input type="radio"/>
...En su vecindario/comunidad	<input type="radio"/>	<input type="radio"/>	<input type="radio"/>	<input type="radio"/>	<input type="radio"/>	<input type="radio"/>
...En el condado de Will	<input type="radio"/>	<input type="radio"/>	<input type="radio"/>	<input type="radio"/>	<input type="radio"/>	<input type="radio"/>

41. ¿Residentes experimentan discriminación?

	Siempre	La mayoría de las veces	A veces	Raramente	Nunca	N/A or No se
...En su casa	<input type="radio"/>	<input type="radio"/>	<input type="radio"/>	<input type="radio"/>	<input type="radio"/>	<input type="radio"/>
...En su vecindario/comunidad	<input type="radio"/>	<input type="radio"/>	<input type="radio"/>	<input type="radio"/>	<input type="radio"/>	<input type="radio"/>
...En el condado de Will	<input type="radio"/>	<input type="radio"/>	<input type="radio"/>	<input type="radio"/>	<input type="radio"/>	<input type="radio"/>

42. Por favor, enumere más comentarios y preocupaciones

Part IV: Salud de Comunidad

Salud de la comunidad Por favor, dé su opinión sobre los siguientes problemas de salud. Para cada uno de los problemas mencionados, marque si cree que no es un problema, un problema pequeño, algo así como un problema o un problema grande. Tenga en cuenta que se le pide que califique cada problema según su hogar, su vecindario y el condado en general.

43. El abuso de drogas ilegales?

	No es un problema	un problema pequeño	algo así como un problema	o un problema grande	N/A or No se
...En su casa	<input type="radio"/>	<input type="radio"/>	<input type="radio"/>	<input type="radio"/>	<input type="radio"/>
...En su vecindario/comunidad	<input type="radio"/>	<input type="radio"/>	<input type="radio"/>	<input type="radio"/>	<input type="radio"/>
...En el condado de Will	<input type="radio"/>	<input type="radio"/>	<input type="radio"/>	<input type="radio"/>	<input type="radio"/>

44. ¿Cigarrillo/Tabaco Uso?

	no es un problema	un problema pequeña	algo así como un problema	o un problema grande	N/A or No se
...En su casa	<input type="radio"/>	<input type="radio"/>	<input type="radio"/>	<input type="radio"/>	<input type="radio"/>
...En su vecindario/comunidad	<input type="radio"/>	<input type="radio"/>	<input type="radio"/>	<input type="radio"/>	<input type="radio"/>
...En el condado de Will	<input type="radio"/>	<input type="radio"/>	<input type="radio"/>	<input type="radio"/>	<input type="radio"/>

45. ¿E-Cigarrillo/Vaporizador Uso?

	no es un problema	un problema pequeña	algo así como un problema	o un problema grande	N/A or No se
...En su casa	<input type="radio"/>	<input type="radio"/>	<input type="radio"/>	<input type="radio"/>	<input type="radio"/>
...En su vecindario/comunidad	<input type="radio"/>	<input type="radio"/>	<input type="radio"/>	<input type="radio"/>	<input type="radio"/>
...En el condado de Will	<input type="radio"/>	<input type="radio"/>	<input type="radio"/>	<input type="radio"/>	<input type="radio"/>

46. ¿Abuso de drogas recetadas?

	no es un problema	un problema pequena	algo asi como un problema	o un problema grande	N/A or No se
...En su casa	<input type="radio"/>	<input type="radio"/>	<input type="radio"/>	<input type="radio"/>	<input type="radio"/>
...En su vecindario/comunidad	<input type="radio"/>	<input type="radio"/>	<input type="radio"/>	<input type="radio"/>	<input type="radio"/>
...En el condado de Will	<input type="radio"/>	<input type="radio"/>	<input type="radio"/>	<input type="radio"/>	<input type="radio"/>

47. ¿Bebida menor de edad?

	no es un problema	un problema pequeno	algo asi como un problema	o un problema grande	N/A or No se
...En su casa	<input type="radio"/>	<input type="radio"/>	<input type="radio"/>	<input type="radio"/>	<input type="radio"/>
...En su vecindario/comunidad	<input type="radio"/>	<input type="radio"/>	<input type="radio"/>	<input type="radio"/>	<input type="radio"/>
...En el condado de Will	<input type="radio"/>	<input type="radio"/>	<input type="radio"/>	<input type="radio"/>	<input type="radio"/>

48. Beber en exceso / abuso de alcohol?

	no es un problema	un problema pequeno	algo asi como un problema	o un problema grande	N/A or No se
...En su casa	<input type="radio"/>	<input type="radio"/>	<input type="radio"/>	<input type="radio"/>	<input type="radio"/>
...En su vecindario/comunidad	<input type="radio"/>	<input type="radio"/>	<input type="radio"/>	<input type="radio"/>	<input type="radio"/>
...En el condado de Will	<input type="radio"/>	<input type="radio"/>	<input type="radio"/>	<input type="radio"/>	<input type="radio"/>

49. ¿Abuso doméstico?

	No es un problema	un problema pequeno	algo asi como un problema	o un problema grande	N/A or No se
...En su casa	<input type="radio"/>	<input type="radio"/>	<input type="radio"/>	<input type="radio"/>	<input type="radio"/>
...En su vecindario/comunidad	<input type="radio"/>	<input type="radio"/>	<input type="radio"/>	<input type="radio"/>	<input type="radio"/>
...En el condado de Will	<input type="radio"/>	<input type="radio"/>	<input type="radio"/>	<input type="radio"/>	<input type="radio"/>

50. ¿Violencia?

	no es un problema	un problema pequeño	algo así como un problema	o un problema grande	N/A or No se
...En su casa	<input type="radio"/>	<input type="radio"/>	<input type="radio"/>	<input type="radio"/>	<input type="radio"/>
...En su vecindario/comunidad	<input type="radio"/>	<input type="radio"/>	<input type="radio"/>	<input type="radio"/>	<input type="radio"/>
...En el condado de Will	<input type="radio"/>	<input type="radio"/>	<input type="radio"/>	<input type="radio"/>	<input type="radio"/>

51. ¿Depresión / trastorno de ansiedad?

	no es un problema	un problema pequeño	algo así como un problema	o un problema grande	N/A or No se
...En su casa	<input type="radio"/>	<input type="radio"/>	<input type="radio"/>	<input type="radio"/>	<input type="radio"/>
...En su vecindario/comunidad	<input type="radio"/>	<input type="radio"/>	<input type="radio"/>	<input type="radio"/>	<input type="radio"/>
...En el condado de Will	<input type="radio"/>	<input type="radio"/>	<input type="radio"/>	<input type="radio"/>	<input type="radio"/>

52. ¿Demencia / enfermedad de Alzheimer?

	no es un problema	un problema pequeño	algo así como un problema	o un problema grande	N/A or No se
...En su casa	<input type="radio"/>	<input type="radio"/>	<input type="radio"/>	<input type="radio"/>	<input type="radio"/>
...En su vecindario/comunidad	<input type="radio"/>	<input type="radio"/>	<input type="radio"/>	<input type="radio"/>	<input type="radio"/>
...En el condado de Will	<input type="radio"/>	<input type="radio"/>	<input type="radio"/>	<input type="radio"/>	<input type="radio"/>

53. ¿Suicidio?

	no es un problema	un problema pequeño	algo así como un problema	o un problema grande	N/A or No se
...En su casa	<input type="radio"/>	<input type="radio"/>	<input type="radio"/>	<input type="radio"/>	<input type="radio"/>
...En su vecindario/comunidad	<input type="radio"/>	<input type="radio"/>	<input type="radio"/>	<input type="radio"/>	<input type="radio"/>
...En el condado de Will	<input type="radio"/>	<input type="radio"/>	<input type="radio"/>	<input type="radio"/>	<input type="radio"/>

54. El auto dano (Corte, etc.)

	no es un problema	un problema pequeno	algo asi como un problema	o un problema grande	N/A or No se
...En su casa	<input type="radio"/>	<input type="radio"/>	<input type="radio"/>	<input type="radio"/>	<input type="radio"/>
...En su vecindario/comunidad	<input type="radio"/>	<input type="radio"/>	<input type="radio"/>	<input type="radio"/>	<input type="radio"/>
...En el condado de Will	<input type="radio"/>	<input type="radio"/>	<input type="radio"/>	<input type="radio"/>	<input type="radio"/>

55. ¿Otros problemas de salud mental?

	No es un problema	Un problema pequeno	Algo asi como un problema	O un problema grande	N/A or No se
... En su casa	<input type="radio"/>	<input type="radio"/>	<input type="radio"/>	<input type="radio"/>	<input type="radio"/>
...En su vecindario/comunidad	<input type="radio"/>	<input type="radio"/>	<input type="radio"/>	<input type="radio"/>	<input type="radio"/>
...En el condado de Will	<input type="radio"/>	<input type="radio"/>	<input type="radio"/>	<input type="radio"/>	<input type="radio"/>

56. Infecciones de transmisión sexual (ITS)?

	No es un problema	Un problema pequeno	Algo asi como un problema	o un problema grande	N/A or No se
...En su casa	<input type="radio"/>	<input type="radio"/>	<input type="radio"/>	<input type="radio"/>	<input type="radio"/>
...En su vecindario/comunidad	<input type="radio"/>	<input type="radio"/>	<input type="radio"/>	<input type="radio"/>	<input type="radio"/>
...En el condado de Will	<input type="radio"/>	<input type="radio"/>	<input type="radio"/>	<input type="radio"/>	<input type="radio"/>

57. Inmunizacion/Vacunacion de los jovenes? (Anti-Vacunacion)

	No es un problema	Un problema pequeno	Algo asi como un problema	o un problema grande	N/A or No se
...En su casa	<input type="radio"/>	<input type="radio"/>	<input type="radio"/>	<input type="radio"/>	<input type="radio"/>
...En su vecindario/comunidad	<input type="radio"/>	<input type="radio"/>	<input type="radio"/>	<input type="radio"/>	<input type="radio"/>
...En el condado de Will	<input type="radio"/>	<input type="radio"/>	<input type="radio"/>	<input type="radio"/>	<input type="radio"/>

58. Por favor, enumere más comentarios y preocupaciones

Part IV: Salud de comunidad

59. ¿Dónde obtiene información sobre temas / recursos relacionados con la salud (calidad del agua, enfermedades del corazón)? Por favor marque todos los que apliquen

- | | | |
|---|--|---|
| <input type="checkbox"/> Iglesia | <input type="checkbox"/> Internet | <input type="checkbox"/> Escuela |
| <input type="checkbox"/> Organización de la comunidad | <input type="checkbox"/> Vecino | <input type="checkbox"/> Medios de comunicacion social |
| <input type="checkbox"/> Medico | <input type="checkbox"/> Periodico | <input type="checkbox"/> Boletines del pueblo/municipio |
| <input type="checkbox"/> Familia | <input type="checkbox"/> Medios de comunicacion/estacion | <input type="checkbox"/> Lugar de trabajo |
| <input type="checkbox"/> Hospital | <input type="checkbox"/> Radio | <input type="checkbox"/> Departamento de salud local |
| <input type="checkbox"/> Otro | | |

60. ¿A dónde va generalmente cuando está enfermo o necesita atención médica? Por favor marque todos los que apliquen

- | | |
|--|--|
| <input type="checkbox"/> Centro de salud comunitario | <input type="checkbox"/> Centro de atención inmediata |
| <input type="checkbox"/> Organización de la comunidad | <input type="checkbox"/> Práctica privada / proveedor de atención médica familiar. |
| <input type="checkbox"/> Clínica gratuita (Clínica médica de Grundy) | <input type="checkbox"/> Clinica de veteranos |
| <input type="checkbox"/> Servicio de urgencias del hospital | <input type="checkbox"/> Clinica minute (Walgreens, CVS, etc.) |
| <input type="checkbox"/> Otro | |

61. ¿A dónde va generalmente cuando está enfermo o necesita atención de salud mental. por favor marque todos los que apliquen

- | | |
|---|--|
| <input type="checkbox"/> Centro de salud comunitario (i.e. Aunt Martha's, VNA, Will County Community Health Center) | <input type="checkbox"/> Centro de atención inmediata |
| <input type="checkbox"/> Organizacion de la comunidad | <input type="checkbox"/> Práctica privada / proveedor de atención médica familiar. |
| <input type="checkbox"/> Clínica gratuita (Clínica médica de Grundy) | <input type="checkbox"/> Clinica de veteranos |
| <input type="checkbox"/> Servicio de urgencias del hospital | <input type="checkbox"/> N/A |
| <input type="checkbox"/> Otro | |

62. ¿A dónde vas usualmente para servicios dentales? Por favor marque todos los que apliquen

- | | |
|---|---|
| <input type="checkbox"/> Centro de salud comunitario (i.e. Aunt Martha's, VNA, Will County Community Health Center) | <input type="checkbox"/> Centro de atención inmediata |
| <input type="checkbox"/> Organización de la comunidad | <input type="checkbox"/> Clínica de veteranos |
| <input type="checkbox"/> Clínica gratuita (i.e. Will-Grundy Medical Clinic) | <input type="checkbox"/> Dentista privado |
| <input type="checkbox"/> Servicio de urgencias del hospital | |
| <input type="checkbox"/> Otro | |

63. ¿Cómo paga por sus servicios de atención médica (no dental)? Por favor marque todos los que apliquen

- Seguro de salud (empleador pagado)
- Seguro de salud (auto pagado)
- Medicaid
- Medicare
- Pagar en efectivo (de su bolsillo)
- Administración de Veteranos
- Otro

64. Por favor, enumere cualquier comentario adicional para ayudarnos a entender sus opciones arriba

Thank You!

Gracias!

por participar en esta encuesta. Para obtener más información sobre esta encuesta o la Colaborativa de Movilización para la Acción del Condado Will a través de la Colaboración de Planificación y Asociaciones (MAPP), visite nuestro sitio web en www.willcountymapp.org

Introduction

Thank you for taking the time to complete this Community Survey for Will County. The purpose of this survey is to gather your thoughts about the health and quality of life in our community. Your feedback will be used to develop a plan to improve Will County's public health system and the health of residents like you.

This survey is for Will County residents. Please read the questions carefully and answer to the best of your ability. Please keep in mind that your choices are confidential and cannot be linked to you in anyway. This survey takes about 15 minutes to complete.

* 1. Do you live in Will County?

- Yes
- No

2. In which Will County zip code do you live?

- | | | |
|---|---|--|
| <input type="checkbox"/> 60503 (Aurora) | <input type="checkbox"/> 60431 (Joliet) | <input type="checkbox"/> 60466 (Park Forest) |
| <input type="checkbox"/> 60401 (Beecher) | <input type="checkbox"/> 60432 (Joliet) | <input type="checkbox"/> 60468 (Peotone) |
| <input type="checkbox"/> 60440 (Bolingbrook) | <input type="checkbox"/> 60433 (Joliet) | <input type="checkbox"/> 60544 (Plainfield) |
| <input type="checkbox"/> 60490 (Bolingbrook) | <input type="checkbox"/> 60435 (Joliet) | <input type="checkbox"/> 60586 (Plainfield) |
| <input type="checkbox"/> 60408 (Braidwood) | <input type="checkbox"/> 60436 (Joliet) | <input type="checkbox"/> 60585 (Plainfield) |
| <input type="checkbox"/> 60410 (Channahon) | <input type="checkbox"/> 60441 (Lockport) | <input type="checkbox"/> 60446 (Romeoville) |
| <input type="checkbox"/> 60403 (Crest Hill) | <input type="checkbox"/> 60442 (Manhattan) | <input type="checkbox"/> 60404 (Shorewood) |
| <input type="checkbox"/> 60417 (Crete) | <input type="checkbox"/> 60448 (Mokena) | <input type="checkbox"/> 60475 (Steger) |
| <input type="checkbox"/> 60421 (Elwood) | <input type="checkbox"/> 60449 (Monee) | <input type="checkbox"/> 60481 (Wilmington) |
| <input type="checkbox"/> 60423 (Frankfort) | <input type="checkbox"/> 60564 (Naperville) | <input type="checkbox"/> 60484 (University Park) |
| <input type="checkbox"/> 60491 (Homer Glen) | <input type="checkbox"/> 60451 (New Lenox) | |
| <input type="checkbox"/> Other (please specify) | | |

Part II: General Information

Please read the following questions carefully and answer to the best of your ability. Keep in mind that your choices are confidential and cannot be linked to you in any way.

3. Age Range

- 0-17 years
- 18-24 years
- 25-34 years
- 35-44 years
- 45-54 years
- 55-64 years
- 65 years and over

4. Sex you most identify with:

- Male
- Female
- Other (please specify)

5. Race you most identify with:

- Asian
- Black
- Native American/Alaskan Native
- Native Hawaiian/Pacific Islander
- White
- Other (please specify)

6. Ethnicity you most identify with:

- Hispanic
- Non-Hispanic

7. What is the primary language you speak in your home?

- English
- Polish
- Spanish
- Tagalog
- Other (please specify)

8. How long have you lived in Will County?

- 0-5 years
- 6-10 years
- 11-15 years
- 15+ years

9. Marital Status

- Single
- Married/Civil Union
- Separated/Divorced
- Widow/er

10. Highest Level of Education earned:

- Less than 9th grade
- Some high school, no diploma
- High school graduate or GED
- Some college, no degree
- Associate's degree
- Bachelor's degree
- Masters or professional degree
- Other (please specify)

11. Annual Household Income

- Less than \$10,000
- \$10,000 to \$14,999
- \$15,000 to \$24,999
- \$25,000 to \$34,999
- \$35,000 to \$49,999
- \$50,000 to \$74,999
- \$75,000 to \$99,999
- \$100,000 to \$149,999
- \$150,000 to \$199,999
- \$200,000 or more
- Not sure

12. How many dependents live in your home/dwelling?

- 1
- 2
- 3
- 4 or more

13. Do you live in a home/dwelling with multiple families?

- Yes
- No
- Not sure

14. Do you own or rent your home/dwelling?

- Own
- Rent
- Not Sure

15. Do you own a smart phone and/or tablet?

- Yes
- No
- Not Sure

16. Have you taken a foreign trip(s) in the past year?

- Yes
- No
- Not Sure

Part III: Quality of Life

Part III of the survey asks questions about the “Quality of Life” in our community. When completing this section, please keep in mind that Quality of Life is defined as your personal satisfaction/happiness (or dissatisfaction/unhappiness) with the conditions in which you live.

17. For each question, please mark in the rating box which most closely matches your opinion.

Excellent Very Good Good Fair Poor

How would you rate the overall quality of life in Will County? (Consider items such as your safety, well-being, and participation in community life)

How would you rate the overall quality of the environment in Will County? (Consider items such as indoor/outdoor air, land, and water)

How would you rate the quality of the healthcare system in Will County? (Consider items such as access, cost, availability, and options in health care)

How would you rate Will County as a place to raise children? (Consider items such as school quality, day care, after school programs, and recreation)

How would you rate Will County as a place to grow old? (Consider items such as elder-friendly housing, transportation to medical services, shopping, elder day care, social support for the elderly living alone, Meals on Wheels)

How would you rate Will County as a safe community? (Consider items such as safety in the home, schools, the workplace, playgrounds, and parks. Do neighbors know and trust each other? Do they look out for each other?)

18. Please list any further comments to help us understand your ratings above

19. For each statement, please mark in the rating box which most closely matches your opinion. Please keep in mind that your choices are confidential and cannot be linked to you in any way.

	Always	Most of the time	Sometimes	Rarely	Never
I have enough money to pay for the things I really need, such as food, clothing, housing, and medicine.	<input type="radio"/>	<input type="radio"/>	<input type="radio"/>	<input type="radio"/>	<input type="radio"/>
I have people with whom I can share problems or get help when needed.	<input type="radio"/>	<input type="radio"/>	<input type="radio"/>	<input type="radio"/>	<input type="radio"/>
In the past year, I was able to get the health services I needed.	<input type="radio"/>	<input type="radio"/>	<input type="radio"/>	<input type="radio"/>	<input type="radio"/>
There are enough jobs in Will County.	<input type="radio"/>	<input type="radio"/>	<input type="radio"/>	<input type="radio"/>	<input type="radio"/>
People work together to get things done for the community.	<input type="radio"/>	<input type="radio"/>	<input type="radio"/>	<input type="radio"/>	<input type="radio"/>
I have a sense of community pride.	<input type="radio"/>	<input type="radio"/>	<input type="radio"/>	<input type="radio"/>	<input type="radio"/>
I have a sense of responsibility to help improve the health of my community.	<input type="radio"/>	<input type="radio"/>	<input type="radio"/>	<input type="radio"/>	<input type="radio"/>
In the past year, I have not worried about experiencing unfair treatment because of my race, ethnicity, or color.	<input type="radio"/>	<input type="radio"/>	<input type="radio"/>	<input type="radio"/>	<input type="radio"/>

20. Please list any further comments to help us understand your ratings above

21. Have you ever experienced discrimination, been prevented from doing something, or been hassled or made to feel inferior in any of the following situations because of your race, ethnicity, or color?

	Four or more times	Two or three times	Once	Never
At school?	<input type="radio"/>	<input type="radio"/>	<input type="radio"/>	<input type="radio"/>
Getting hired or getting a job?	<input type="radio"/>	<input type="radio"/>	<input type="radio"/>	<input type="radio"/>
At work?	<input type="radio"/>	<input type="radio"/>	<input type="radio"/>	<input type="radio"/>
Getting housing?	<input type="radio"/>	<input type="radio"/>	<input type="radio"/>	<input type="radio"/>
Getting medical care?	<input type="radio"/>	<input type="radio"/>	<input type="radio"/>	<input type="radio"/>
Getting service in a store or restaurant?	<input type="radio"/>	<input type="radio"/>	<input type="radio"/>	<input type="radio"/>
Getting credit, bank loans, or a mortgage?	<input type="radio"/>	<input type="radio"/>	<input type="radio"/>	<input type="radio"/>
On the street or in a public setting?	<input type="radio"/>	<input type="radio"/>	<input type="radio"/>	<input type="radio"/>
From the police or in the courts?	<input type="radio"/>	<input type="radio"/>	<input type="radio"/>	<input type="radio"/>

22. Please list any further comments to help us understand your ratings above

41. Residents experience discrimination.

	Always	Most of the time	Sometimes	Rarely	Never	N/A or I don't know
...in your home	<input type="radio"/>	<input type="radio"/>	<input type="radio"/>	<input type="radio"/>	<input type="radio"/>	<input type="radio"/>
...in your neighborhood/community	<input type="radio"/>	<input type="radio"/>	<input type="radio"/>	<input type="radio"/>	<input type="radio"/>	<input type="radio"/>
...in Will County	<input type="radio"/>	<input type="radio"/>	<input type="radio"/>	<input type="radio"/>	<input type="radio"/>	<input type="radio"/>

42. Please list any further comments to help us understand your ratings above

Part IV: Community Health

Please provide your opinion on the following health issues. For each of the issues mentioned, please mark if you think it is not a problem, a small problem, somewhat a problem, or a large problem. Note that you are being asked to rate each issue more than once – for the home and neighborhood/community you live in and for Will County as a whole. Please keep in mind that your choices are confidential and cannot be linked to you in any way.

43. Illegal Drug Use

	It is not a problem	It is a small problem	It is somewhat a problem	It is a large problem	N/A or Don't Know
...in your home	<input type="radio"/>	<input type="radio"/>	<input type="radio"/>	<input type="radio"/>	<input type="radio"/>
...in your neighborhood/community	<input type="radio"/>	<input type="radio"/>	<input type="radio"/>	<input type="radio"/>	<input type="radio"/>
...in Will County	<input type="radio"/>	<input type="radio"/>	<input type="radio"/>	<input type="radio"/>	<input type="radio"/>

44. Prescription Drug Use

	It is not a problem	It is a small problem	It is somewhat a problem	It is a large problem	N/A or Don't Know
...in your home	<input type="radio"/>	<input type="radio"/>	<input type="radio"/>	<input type="radio"/>	<input type="radio"/>
...in your neighborhood/community	<input type="radio"/>	<input type="radio"/>	<input type="radio"/>	<input type="radio"/>	<input type="radio"/>
...in Will County	<input type="radio"/>	<input type="radio"/>	<input type="radio"/>	<input type="radio"/>	<input type="radio"/>

45. Cigarette/Tobacco Use

	It is not a problem	It is a small problem	It is somewhat a problem	It is a large problem	N/A or Don't Know
...in your home	<input type="radio"/>	<input type="radio"/>	<input type="radio"/>	<input type="radio"/>	<input type="radio"/>
...in your neighborhood/community	<input type="radio"/>	<input type="radio"/>	<input type="radio"/>	<input type="radio"/>	<input type="radio"/>
...in Will County	<input type="radio"/>	<input type="radio"/>	<input type="radio"/>	<input type="radio"/>	<input type="radio"/>

46. E-cigarette/Vaporizer Use

	It is not a problem	It is a small problem	It is somewhat a problem	It is a large problem	N/A or Don't Know
...in your home	<input type="radio"/>	<input type="radio"/>	<input type="radio"/>	<input type="radio"/>	<input type="radio"/>
...in your neighborhood/community	<input type="radio"/>	<input type="radio"/>	<input type="radio"/>	<input type="radio"/>	<input type="radio"/>
...in Will County	<input type="radio"/>	<input type="radio"/>	<input type="radio"/>	<input type="radio"/>	<input type="radio"/>

47. Underage Drinking

	It is not a problem	It is a small problem	It is somewhat a problem	It is a large problem	N/A or Don't Know
...in your home	<input type="radio"/>	<input type="radio"/>	<input type="radio"/>	<input type="radio"/>	<input type="radio"/>
...in your neighborhood/community	<input type="radio"/>	<input type="radio"/>	<input type="radio"/>	<input type="radio"/>	<input type="radio"/>
...in Will County	<input type="radio"/>	<input type="radio"/>	<input type="radio"/>	<input type="radio"/>	<input type="radio"/>

48. Excessive Drinking/Alcohol Use

	It is not a problem	It is a small problem	It is somewhat a problem	It is a large problem	N/A or Don't Know
...in your home	<input type="radio"/>	<input type="radio"/>	<input type="radio"/>	<input type="radio"/>	<input type="radio"/>
...in your neighborhood/community	<input type="radio"/>	<input type="radio"/>	<input type="radio"/>	<input type="radio"/>	<input type="radio"/>
...in Will County	<input type="radio"/>	<input type="radio"/>	<input type="radio"/>	<input type="radio"/>	<input type="radio"/>

49. Domestic Abuse

	It is not a problem	It is a small problem	It is somewhat a problem	It is a large problem	N/A or Don't Know
...in your home	<input type="radio"/>	<input type="radio"/>	<input type="radio"/>	<input type="radio"/>	<input type="radio"/>
...in your neighborhood/community	<input type="radio"/>	<input type="radio"/>	<input type="radio"/>	<input type="radio"/>	<input type="radio"/>
...in Will County	<input type="radio"/>	<input type="radio"/>	<input type="radio"/>	<input type="radio"/>	<input type="radio"/>

50. Violence

	It is not a problem	It is a small problem	It is somewhat a problem	It is a large problem	N/A or Don't Know
...in your home	<input type="radio"/>	<input type="radio"/>	<input type="radio"/>	<input type="radio"/>	<input type="radio"/>
...in your neighborhood/community	<input type="radio"/>	<input type="radio"/>	<input type="radio"/>	<input type="radio"/>	<input type="radio"/>
...in Will County	<input type="radio"/>	<input type="radio"/>	<input type="radio"/>	<input type="radio"/>	<input type="radio"/>

51. Depression/Anxiety Disorder

	It is not a problem	It is a small problem	It is somewhat a problem	It is a large problem	N/A or Don't Know
...in your home	<input type="radio"/>	<input type="radio"/>	<input type="radio"/>	<input type="radio"/>	<input type="radio"/>
...in your neighborhood/community	<input type="radio"/>	<input type="radio"/>	<input type="radio"/>	<input type="radio"/>	<input type="radio"/>
...in Will County	<input type="radio"/>	<input type="radio"/>	<input type="radio"/>	<input type="radio"/>	<input type="radio"/>

52. Dementia/Alzheimer's Disease

	It is not a problem	It is a small problem	It is somewhat a problem	It is a large problem	N/A or Don't Know
...in your home	<input type="radio"/>	<input type="radio"/>	<input type="radio"/>	<input type="radio"/>	<input type="radio"/>
...in your neighborhood/community	<input type="radio"/>	<input type="radio"/>	<input type="radio"/>	<input type="radio"/>	<input type="radio"/>
...in Will County	<input type="radio"/>	<input type="radio"/>	<input type="radio"/>	<input type="radio"/>	<input type="radio"/>

53. Suicide

	It is not a problem	It is a small problem	It is somewhat a problem	It is a large problem	N/A or Don't Know
...in your home	<input type="radio"/>	<input type="radio"/>	<input type="radio"/>	<input type="radio"/>	<input type="radio"/>
...in your neighborhood/community	<input type="radio"/>	<input type="radio"/>	<input type="radio"/>	<input type="radio"/>	<input type="radio"/>
...in Will County	<input type="radio"/>	<input type="radio"/>	<input type="radio"/>	<input type="radio"/>	<input type="radio"/>

54. Self Harm (i.e. Cutting, etc.)

	It is not a problem	It is a small problem	It is somewhat a problem	It is a large problem	N/A or Don't know
...in your home	<input type="radio"/>	<input type="radio"/>	<input type="radio"/>	<input type="radio"/>	<input type="radio"/>
...in your neighborhood/community	<input type="radio"/>	<input type="radio"/>	<input type="radio"/>	<input type="radio"/>	<input type="radio"/>
...in Will County	<input type="radio"/>	<input type="radio"/>	<input type="radio"/>	<input type="radio"/>	<input type="radio"/>

55. Other Mental Health Issues

	It is not a problem	It is a small problem	It is somewhat a problem	It is a large problem	N/A or Don't Know
...in your home	<input type="radio"/>	<input type="radio"/>	<input type="radio"/>	<input type="radio"/>	<input type="radio"/>
...in your neighborhood/community	<input type="radio"/>	<input type="radio"/>	<input type="radio"/>	<input type="radio"/>	<input type="radio"/>
...in Will County	<input type="radio"/>	<input type="radio"/>	<input type="radio"/>	<input type="radio"/>	<input type="radio"/>

56. Sexually Transmitted Infections (STIs)

	It is not a problem	It is a small problem	It is somewhat a problem	It is a large problem	N/A or Don't Know
...in your home	<input type="radio"/>	<input type="radio"/>	<input type="radio"/>	<input type="radio"/>	<input type="radio"/>
...in your neighborhood/community	<input type="radio"/>	<input type="radio"/>	<input type="radio"/>	<input type="radio"/>	<input type="radio"/>
...in Will County	<input type="radio"/>	<input type="radio"/>	<input type="radio"/>	<input type="radio"/>	<input type="radio"/>

57. Immunizations/Vaccinations of youth (i.e. Anti-Vaccination/Immunization)

	It is not a problem	It is a small problem	It is somewhat a problem	It is a large problem	N/A or Don't Know
...in your home	<input type="radio"/>	<input type="radio"/>	<input type="radio"/>	<input type="radio"/>	<input type="radio"/>
...in your neighborhood/community	<input type="radio"/>	<input type="radio"/>	<input type="radio"/>	<input type="radio"/>	<input type="radio"/>
...in Will County	<input type="radio"/>	<input type="radio"/>	<input type="radio"/>	<input type="radio"/>	<input type="radio"/>

58. Please list any further comments to help us understand your ratings above

Part IV: Community Health

59. Where do you get information about health related issues/resources (e.g., water quality, heart disease) in Will County? Please check all that apply.

- | | | |
|--|--|--|
| <input type="checkbox"/> Church | <input type="checkbox"/> Internet | <input type="checkbox"/> Radio |
| <input type="checkbox"/> Community Organizations | <input type="checkbox"/> Local Health Department | <input type="checkbox"/> School |
| <input type="checkbox"/> Doctor | <input type="checkbox"/> Neighbor | <input type="checkbox"/> Social Media |
| <input type="checkbox"/> Family | <input type="checkbox"/> Newspaper (print or online) | <input type="checkbox"/> Village/Township newsletter |
| <input type="checkbox"/> Hospital | <input type="checkbox"/> News station (TV or online) | <input type="checkbox"/> Workplace |
| <input type="checkbox"/> Other (please specify) | | |

60. Where do you usually go when you are sick or in need of health care? Please check all that apply.

- | | |
|---|---|
| <input type="checkbox"/> Community Health Center (i.e. Aunt Martha's, VNA, Will County Community Health Center) | <input type="checkbox"/> Immediate Care Center |
| <input type="checkbox"/> Community Organizations | <input type="checkbox"/> Private practice/family health care provider |
| <input type="checkbox"/> Free Clinic (i.e. Will-Grundy Medical Clinic) | <input type="checkbox"/> Quick Clinic (CVS, Walgreens, etc) |
| <input type="checkbox"/> Hospital Emergency Department | <input type="checkbox"/> Veteran's Clinic |
| <input type="checkbox"/> Other (please specify) | |

61. If applicable, where do you or your family go when in need of mental health care? Please check all that apply.

- | | |
|---|---|
| <input type="checkbox"/> Community Health Center (i.e. Aunt Martha's, VNA, Will County Community Health Center) | <input type="checkbox"/> Immediate Care Center |
| <input type="checkbox"/> Community Organizations | <input type="checkbox"/> Private practice/family health care provider |
| <input type="checkbox"/> Free Clinic (i.e. Will-Grundy Medical Clinic) | <input type="checkbox"/> Veteran's Clinic |
| <input type="checkbox"/> Hospital Emergency Department | <input type="checkbox"/> Not Applicable |
| <input type="checkbox"/> Other (please specify) | |

62. Where do you usually go for dental services? Please check all that apply.

- | | |
|---|--|
| <input type="checkbox"/> Community Health Center (i.e. Aunt Martha's, VNA, Will County Community Health Center) | <input type="checkbox"/> Immediate Care Center |
| <input type="checkbox"/> Community Organizations | <input type="checkbox"/> Private dentist |
| <input type="checkbox"/> Free Clinic (i.e. Will-Grundy Medical Clinic) | <input type="checkbox"/> Veteran's Clinic |
| <input type="checkbox"/> Hospital Emergency Department | |
| <input type="checkbox"/> Other (please specify) | |

63. How do you pay for your health care (non-dental)? Please check all that apply.

- Health insurance (through employer)
- Health insurance (self pay)
- Medicaid
- Medicare
- Pay cash (no insurance)
- Veterans' Administration
- Other (please specify)

64. Please list any further comments to help us understand your choices above

Thank You!

Thank you for your participation!

For more information about this survey or the Will County Mobilizing for Action through Planning and Partnerships (MAPP) Collaborative, please visit our website at www.willcountymapp.org.