

**Will County
MAPP Collaborative
2022**

**Forces of Change
Assessment**



Table of Contents

Introduction	Page 1
Assessment Methodology.....	Page 2
Executive Summary	Page 3
Forces of Change Assessment Results.....	Page 6
Appendix A: Forces of Change Assessment Email Prom pt.....	Page 13
Appendix B: Forces of Change Assessment Survey Questions	Page 14
Appendix C: Forces of Change Assessment Survey Results.....	Page 18

Introduction

In 2022, the Will County Mobilizing for Action through Planning and Partnerships (MAPP) Collaborative convened to conduct the fifth iteration of the MAPP process. MAPP is a community driven, strategic planning framework that assists communities in developing and implementing efforts around the prioritization of public health issues and the identification of resources to address them as defined by the 10 Essential Public Health Services. The MAPP process includes four assessments, Community Health Status Assessment (CHSA), Community Themes and Strengths Assessment (CTSA), Local Public Health System Assessment (LPHSA), and the Forces of Change Assessment.



The Forces of Change Assessment (FOCA) aims to identify all the forces and associated opportunities and threats that can affect, either now or in the future, the local public health system. Forces may be social, economic, political, technological, environmental, scientific, legal and/or ethical in nature.

Forces can be trends, factors or events.

- Trends are patterns over time, such as migration in and out of a community or a growing disillusionment with government.
- Factors are discrete elements, such as a community's large ethnic population, an urban setting, or the jurisdiction's proximity to a major waterway.
- Events are one-time occurrences, such as a hospital closure, a natural disaster, or the passage of new legislation.

During the FOCA, participants answer the following questions:

- What is occurring or might occur that affects the health of our community or the local public health system?
- What specific threats or opportunities are generated by these occurrences?

Assessment Methodology

On February 16th, 2022, the Will County MAPP Collaborative distributed the Forces of Change Assessment online. This survey was distributed to members of the MAPP Executive Committee, MAPP Action Teams, Will County Board of Health, Will County Board, Ascension Saint Joseph Medical Center Community, the Silver Cross Hospital Health Community, Advent Health Bolingbrook Hospital Community, Edward-Elmhurst Hospital Health Community, MAPP Community based organizational partners, and community members.

An email was sent and invited participation. Survey Monkey, an online survey and data collection system, was used to identify the forces of change affecting Will County's local public health system and the community. The survey was divided into three sections and contained open-ended questions, with guided prompts, to identify, rank, and describe threats and opportunities for eight categories of forces. An additional health equity question was included asking if any forces identified will impact equal opportunity for health and access to care. While an answer was not required for every question, diverse community input was encouraged. A definition of each force was provided by clicking a hyperlink that was directed to the Merriam-Webster online dictionary. The deadline to complete this survey was July 27th, 2022 in order to capture more responses among all MAPP assessments. Survey results were analyzed by the MAPP Coordinator and used to gather the top identified forces. This survey was open to anyone who lived or worked in Will County. Those who selected the answer option "I do not live or work in Will County" in Question 1 was directed to the end of the survey.

Following analysis of the survey results by the coordinator, forces were combined into cross-cutting themes and listed alphabetically. A draft Forces of Change Assessment was presented to the MAPP Executive Committee for review and approval in August 2022.

Forces of Change Assessment (FOCA) Executive Summary

The Forces of Change Assessment (FOCA) elicited broad community input to identify forces of change impacting the local public health system in Will County. Participants reported on current trends, events, and factors that may have implications on the local public health system and quality of life for Will County residents. FOCA participants also addressed threats and opportunities posed by each of the major forces.

An analysis of the forces reported by MAPP Partners and community members throughout the FOCA process produced ten issues:

- Access to transportation
- Access/affordability of healthy foods
- Access/affordability of housing
- Air and water quality
- Behavioral health/substance abuse
- Equitable and quality health care
- Funding for social service agencies
- Political climate
- Unemployment/underemployment
- Use and influence of technology/social media

When asked to rank the top three forces with the most impact, survey participants ranked (1) Economic Forces (38%), (2) Social Forces (35%), and (3) Political Forces (29%) as key issues in Will County.

Regarding these issues, community members identified several opportunities to create positive change in Will County. In general, the following themes of opportunities were identified for each force:

- Increase advocacy for funding and health and human services for socially vulnerable
- Increase partnership/coordination
- Increase educational opportunity
- Improve literacy among socially vulnerable populations
- Increase jobs/employment opportunities

Below are notable opportunities associated with each of the ten cross-cutting issues.

Force of Change	Opportunities Identified
Access to transportation	<ul style="list-style-type: none"> • Improve partnerships with transportation agencies • Increase advocacy and funding to expand transportation options
Access/affordability of healthy foods	<ul style="list-style-type: none"> • Increase access to healthy food options • Advocate for local food systems and local food distributions to meet demands • Increase literacy related to nutritional guidelines
Access/affordability of housing	<ul style="list-style-type: none"> • Increase advocacy for affordable housing options • Increase advocacy and support for individuals suffering from housing insecurity
Air and water quality	<ul style="list-style-type: none"> • Increase advocacy to improve air and water quality standards • Increase advocacy to conserve local lands
Behavioral health/substance abuse	<ul style="list-style-type: none"> • Increase advocacy and funding to expand treatment facilities and providers • Increase coordination of care with existing Will County agencies • Improve community perception and decrease stigma of behavioral health services

Equitable and quality health care	<ul style="list-style-type: none"> • Increase advocacy and funding for more equitable and quality health care services • Increase collaborations with community agencies to reach youth and other target populations • Improve cultural and ethnic sensitives among the health and human services sector, including but not limited to communications strategies • Expand mobile and satellite services for socially vulnerable populations • Implement policy for an equitable workforce
Funding for social service agencies	<ul style="list-style-type: none"> • Increase advocacy for stable state funding • Increase awareness and education of public health issues to elected officials • Diversify funding opportunities • Expand funding for community impact implementation related to social determinants of health
Political climate	<ul style="list-style-type: none"> • Increase advocacy efforts and support for vulnerable and minority populations • Increase awareness and education of public health issues to elected officials • Encourage bipartisanship over issues regarding social determinants of health and other public health issues • Increase voter registration among Black, Indigenous, People of Color (BIPOC) communities through increased awareness and advocacy efforts
Unemployment/underemployment	<ul style="list-style-type: none"> • Encourage industries and businesses to bring diversified employment opportunities to Will County • Increase advocacy for fair wages and income equality
Use and influence of technology/social media	<ul style="list-style-type: none"> • Improve technology access for socially vulnerable populations • Improve technology access and education for the senior population • Expand telehealth opportunities • Expand data warehousing and data sharing among organizations

The issues and opportunities mentioned above will inform future strategic planning in Will County to improve the health and overall quality of life of Will County residents. The FOCA and other MAPP assessments are key in identifying and prioritizing health issues in Will County.

Forces of Change Assessment (FOCA) Results

The FOCA survey was developed, tested, and released to MAPP members and community partners via email on February 16th, 2022 and shared monthly through July of 2022. In this survey, community members (who live and/or work in Will County) were asked to identify forces of change impacting the Will County public health system and community, using eight categories of forces.

We received 35 responses to the survey. The survey was distributed to roughly 600 participants. Due to email duplications in listservs and that this survey was open to all who work and live in Will County, the total number of surveys distributed is a best estimate. The response rate for this survey based on the number of surveys distributed is estimated at about 5.8%. Below are the survey questions and results.

Survey Questions

SECTION I: Identify all Forces of Change in Will County, IL

1. Check one statement.
 - a. I live in Will County.
 - b. I work in Will County.
 - c. I live and work in Will County.
 - d. I do not live or work in Will County.

2. Please list all forces of change, outside of your control, that affect the local public health system or community that has occurred recently or may occur in the future. What forces, trends, and/or characteristics are occurring locally in Will County? In Illinois? Nationally? Globally?

a. Social Forces	e. Environmental Forces
b. Economic Forces	f. Scientific Forces
c. Political Forces	g. Legal Forces
d. Technological Forces	h. Ethical Forces

SECTION II: Rank Priority of Identified Forces and Identify Threats and Opportunities of Each Force

3. #1 Force - Most impact on the health of the Will County community
 - a. What threats are posed with the force that you identified?
 - b. What opportunities arise from that threat?
4. #2 Force - Second most impact on the health of the Will County community
 - a. What threats are posed with the force that you identified?
 - b. What opportunities arise from that threat?
5. #3 Force - Third most impact on the health of the Will County community
 - a. What threats are posed with the force that you identified?
 - b. What opportunities arise from that threat?

SECTION III: Health Equity

6. Please explain if any of the forces that you ranked will impact (positively or negatively) equal opportunity for health and access to care based on race, ethnicity, gender, age, sexual orientation, socioeconomic status, and/or education level.

Participants

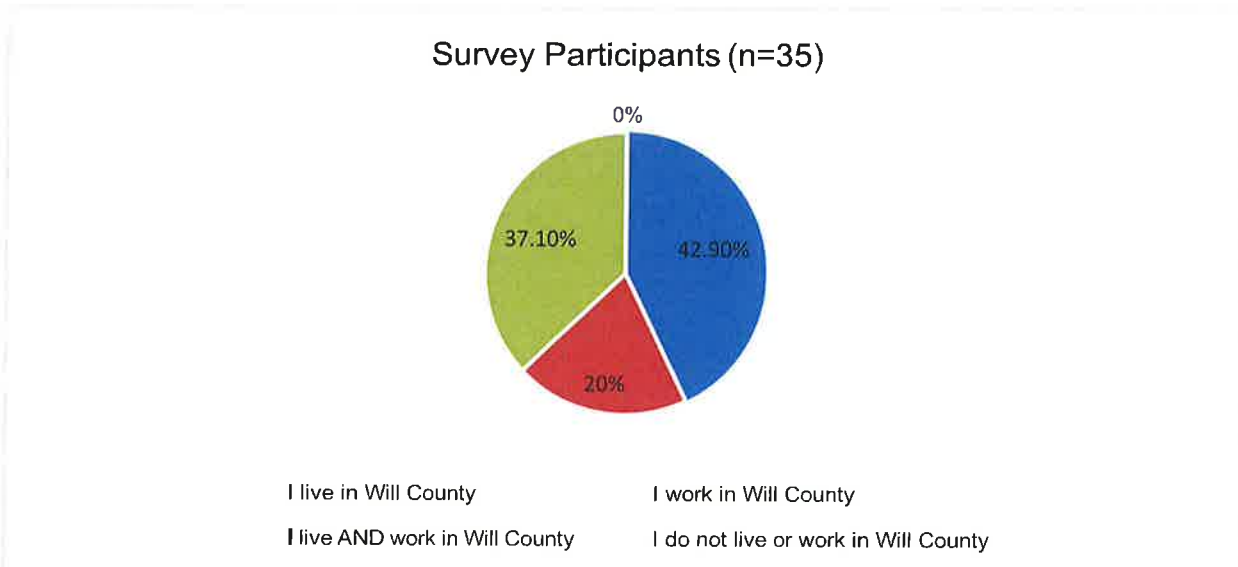
Due to the anonymity of this survey, the participants' names and agencies have not been collected, however, the following groups were contacted through email to complete the FOCA survey.

- MAPP Executive Team members
- MAPP Action Team members
- MAPP Community Partners
- Will County Board of Health
- Will County Board Members
- Constant Contact Community
- Ascension Saint Joseph Medical Center Community
- Advent Health Bolingbrook Community
- Edwards-Elmhurst Hospital Community
- Silver Cross Community Health Community
- Will County Health Department and Community Health Center

Results

SECTION I: IDENTIFY ALL FORCES OF CHANGE IN WILL COUNTY, IL

The first question of the survey asked participants to identify if they live and/or work in Will County. Although the responses were fairly even, the majority of participants (42.9%) live in Will County and work outside of the count y.

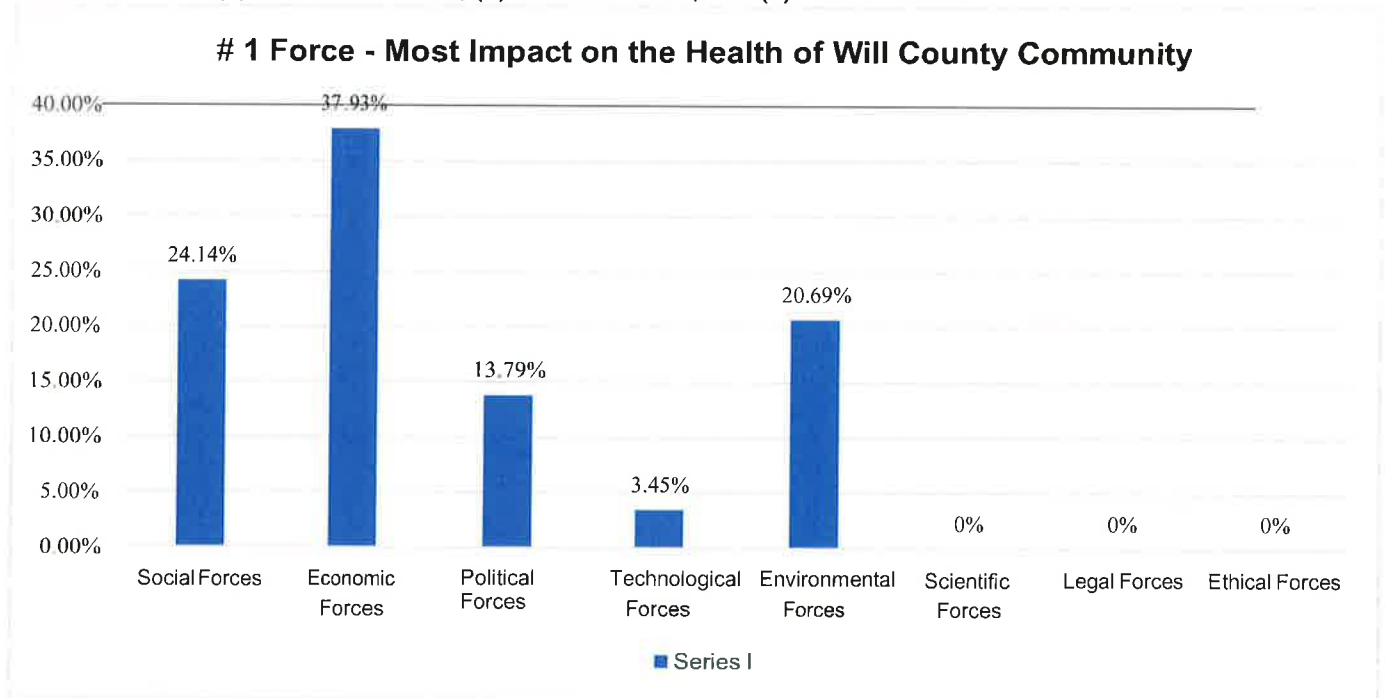


The next question asked to list all forces of change that affect the local public health system or community locally, nationally and globally. The following table contains the forces of change that were identified for each of the specific survey categories.

<p>Social Forces</p>	<p>Economic Forces</p>
<ul style="list-style-type: none"> • Anti-vaccination epidemic • Behavioral health/mental health/substance use disorders • Diversity and rights • Social Media usage/influence 	<ul style="list-style-type: none"> • Affordable housing • Cost of health care • Businesses leaving Will County • Increased taxes • Low-income jobs/underemployment • Poverty • Income inequality
<p>Political Forces</p>	<p>Technological Forces</p>
<ul style="list-style-type: none"> • Funding • Healthcare advocacy/policies • Lack of bipartisanship • Communication strategies 	<ul style="list-style-type: none"> • Affordable technology/access for all • Children/youth and technology • Telehealth/data sharing • Technology security • Technology training
<p>Environmental Forces</p>	<p>Scientific Forces</p>
<ul style="list-style-type: none"> • Global warming/climate change • Pollution/poor air quality • Water concerns • Loss of agriculture and conservation land 	<ul style="list-style-type: none"> • Advances in medical treatment(s) • Innovation • SARS-COV2 Pandemic
<p>Legal Forces</p>	<p>Ethical Forces</p>
<ul style="list-style-type: none"> • Access to legal services • Improper incarceration/rights violations 	<ul style="list-style-type: none"> • Declining religious presence • Lack of morals/ethical standards • Disproportionate impact on Black, Indigenous, and people of color (BIPOC) community

SECTION II: Rank Priority of Identified Forces and Identify Threats and Opportunities of Each Force

Respondents were asked to rank the top three forces that have the most impact on the health of the community in Will County. The top three forces with the most impact as identified by survey respondents are (1) Economic Forces, (2) Political Forces, and (3) Social Forces.



Economic forces were named by 38% of respondents as the force with the most impact on the health of the Will County community.

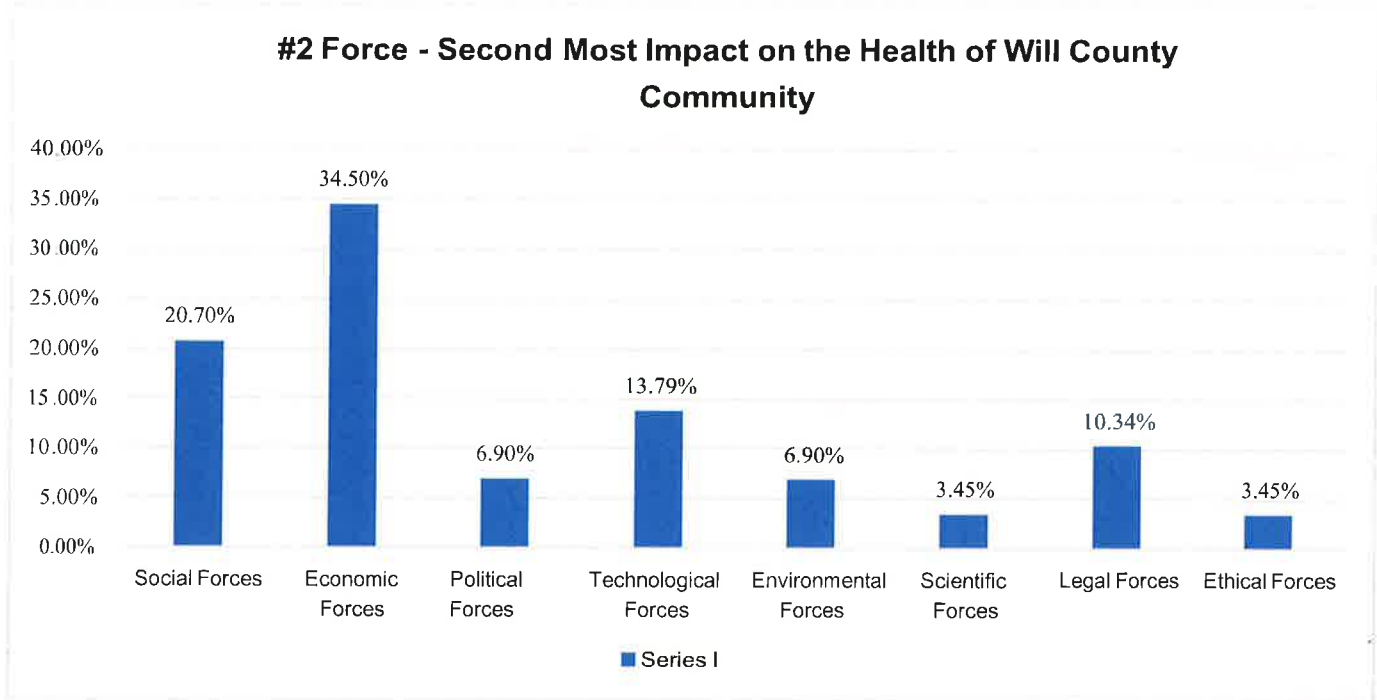
The top threats identified by those who chose economic forces as the #1 priority are as follows:

- Financial insecurity and stress on families
- Low job opportunities for skilled labor
- Income inequality
- Insufficient funds for medical and behavioral health care
- Underemployment and low wages

The top opportunities identified by those who chose economic forces as the #1 priority are as follows:

- Increase opportunities for employment
- Increase partnerships to address access to services and resources
- Education and awareness campaigns
- Income equality

Economic forces had the most responses (34.5%) as the force with the second most impact on the health of the Will County community. However, since economic forces were identified as the top force impacting health, the next identified force with the most responses (20.7%), Social Forces, was analyzed.



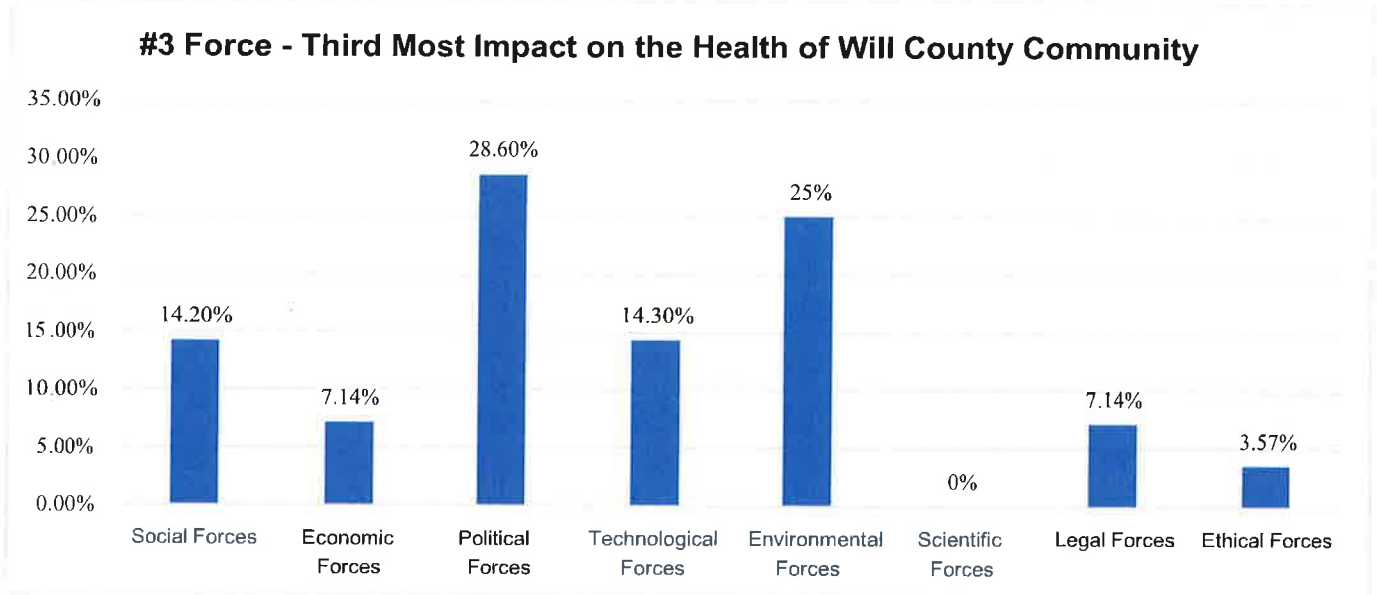
The top opportunities identified by those who chose social forces as the #2 priority are as follows:

- Improve access to health and human services
- Improve access to virtual health and human services
- Equity declaration at the county and organizational level

The top threats identified by those who chose social forces as the #2 priority are as follows:

- Stigma related to mental health and substance use
- Lack of access to higher learning
- Language barriers
- Virtual access
- Systemic racism
- Isolated senior population
- Referral to wrap around services
- Stress due to political climate
- Domestic violence

Political forces had the most responses (28.6%) as the force with the third most impact on the health of the Will County community.



The top threats identified by those who chose political forces as the #3 priority are as follows:

- Anti-vaccination movement
- Gun violence
- No bipartisanship/ increased polarization
- Funding and policy activation

The top opportunities identified by those who chose political forces as the #3 priority are as follows:

- Advocate for more state funding
- Improve bipartisanship
- Policy implementation
- Funding implementation towards improving quality of life among the disproportionately impacted

Of the top three forces ranked by survey participants, common themes were identified when asked to list threats and opportunities to be addressed.

Top themes for identified threats

- Lack of access to health/services
- Lack of funding
- Lack of jobs
- Poverty

Top themes for identified opportunities

- Increase advocacy
- Increase partnership/coordination
- Increase education
- Increase jobs/employment opportunities

SECTION III: Health Equity

In this section, respondents were asked to explain if any of the forces ranked will positively or negatively impact equal opportunity for health and access to care based on race, ethnicity, gender, age, sexual orientation, socioeconomic status, and/or education level. Twenty-three open-ended responses were recorded for this question. Two common themes were mentioned:

- Disparities have decreased access to health services
- Additional barriers exist for those with health inequities
- Lack of access to income equality
- Lack of access to technology
- Lack of access to education
- Cultural and ethnic sensitivities

Forces of Change Assessment, Conclusion

Throughout all three sections of the FOCA survey, the FOCA Subcommittee elicited community participation in identifying the forces of change impacting the Will County public health system. As a result, the Subcommittee was able to utilize broad community input and refine the data into ten cross-cutting themes (listed below). These themes will be used to guide future strategic planning in the MAPP process and throughout Will County initiatives.

Final Forces of Change

- Access to transportation
- Access/affordability of healthy foods
- Access/affordability of housing
- Air and water quality
- Behavioral health/substance use
- Equitable and quality health care
- Funding for social service agencies
- Political climate
- Unemployment/underemployment
- Use and influence of technology/social media



Forces of Change Assessment

The Forces of Change Assessment (FOCA) aims to identify all the forces and associated opportunities and threats that can affect, either now or in the future, the local public health system. The local public health system encompasses all organizations that affect the quality-of-life and health of the community; it is not only those organizations that directly provide health services. Forces may be social, economic, political, technological, environmental, scientific, legal and/or ethical in nature. There are two parts to this assessment: identifying and ranking Forces of Change and Health Equity.

<https://www.surveymonkey.com/r/9ZLJGKJ>





Forces of Change Assessment (FOCA)

Please note this assessment will take approximately 10 minutes to complete. The survey will encompass the Forces of Change Assessment (FOCA). We value your time and input. We thank you in advance for making time to complete this assessment electronically in lieu of an in-person meeting.

This **Forces of Change Assessment (FOCA)** aims to identify all the forces and associated opportunities and threats that can affect, either now or in the future, the local public health system. The local public health system encompasses all organizations that affect the quality of life and health of the community; it is not only those organizations that directly provide health services. Forces may be social, economic, political, technological, environmental, scientific, legal and/or ethical in nature. There are two parts to this assessment: identifying and ranking Forces of Change and Health Equity.

This survey contains open-ended questions, with guided prompts, intended to identify the forces of change impacting the local public health system of Will County. Please use this survey to give your input on what is affecting your community.

Forces can be trends, factors or events.

Trends are patterns over time, such as migration in and out of a community or a growing disillusionment with government.

Factors are discrete elements, such as a community's large ethnic population, an urban setting, or the jurisdiction's proximity to a major waterway.

Events are one-time occurrences, such as a hospital closure, a natural disaster, or the passage of new legislation.

During the FOCA, please answer the following questions:

- 1) What is occurring or might occur that affects the health of our community or the local public health system?
- 2) What specific threats or opportunities are generated by these occurrences?

If needed, a definition of the force is provided through a blue hyperlink.



1. Please check one statement:

I live in Will County

I work in Will County

I live and work in Will County

I do not live or work in Will County

2. Please list all forces of change, outside of your control, that affect the local public health system or community that has occurred recently or may occur in the future. What forces, trends, and/or characteristics are occurring local in Will County? In Illinois? Nationally? Globally?

Social Forces:

Economic Forces:

Political Forces:

Technological Forces:

Environmental Forces:

Scientific Forces:

Legal Forces:

Ethical Forces:



Section II: Rank Priority of Identified Forces and Identify Threats and Opportunities of Each Force

In this section, **please rank the top 3 forces** (of all the forces you identified in part one) based on how much impact you feel each force has on the health of the Will County community.

- #1 has the most impact on the health of the Will County community**
- #2 has the second most impact on the health of the Will County community**
- #3 has the third most impact on the health of the Will County community**

3. #1 Force - Most impact on the health of the Will County community

4. #1 Force - Most impact on the health of the Will County community (cont.)

What threats are posed with the force that you identified?

What opportunities arise from that threat?

5. #2 Force - Second most impact on the health of the Will County community



6. #2 Force - Second most impact on the health of the Will County community (cont.)

What threats are posed with the force that you identified?

What opportunities arise from that threat?

7. #3 Force - Third most impact on the health of the Will County community



8. #3 Force - Third most impact on the health of the Will County community (cont.)

What threats are posed with the force that you identified?

What opportunities arise from that threat?



Section III: Health Equity

9. Please explain if any of the forces that you ranked will impact (positively or negatively) equal opportunity for health and access to care based on race, ethnicity, gender, age, sexual orientation, socioeconomic status, and/or education level?



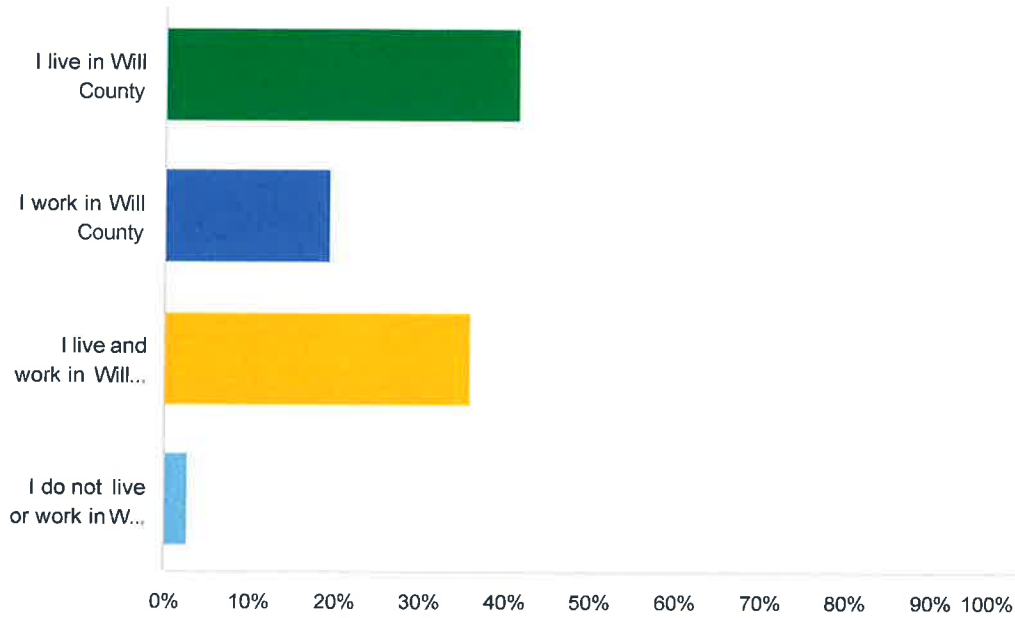
Thank you!

Thank you for taking the time to complete this assessment. For further information about the Will County MAPP Collaborative, please visit www.willcountymapp.org.

Please click **Done** to submit this assessment.

Q1 Please check one statement:

Answered: 36 Skipped: 0



ANSWER CHOICES	RESPONSES	
I live in Will County	41.67%	15
I work in Will County	19.44%	7
I live and work in Will County	36.11%	13
I do not live or work in Will County	2.78%	1
TOTAL		36

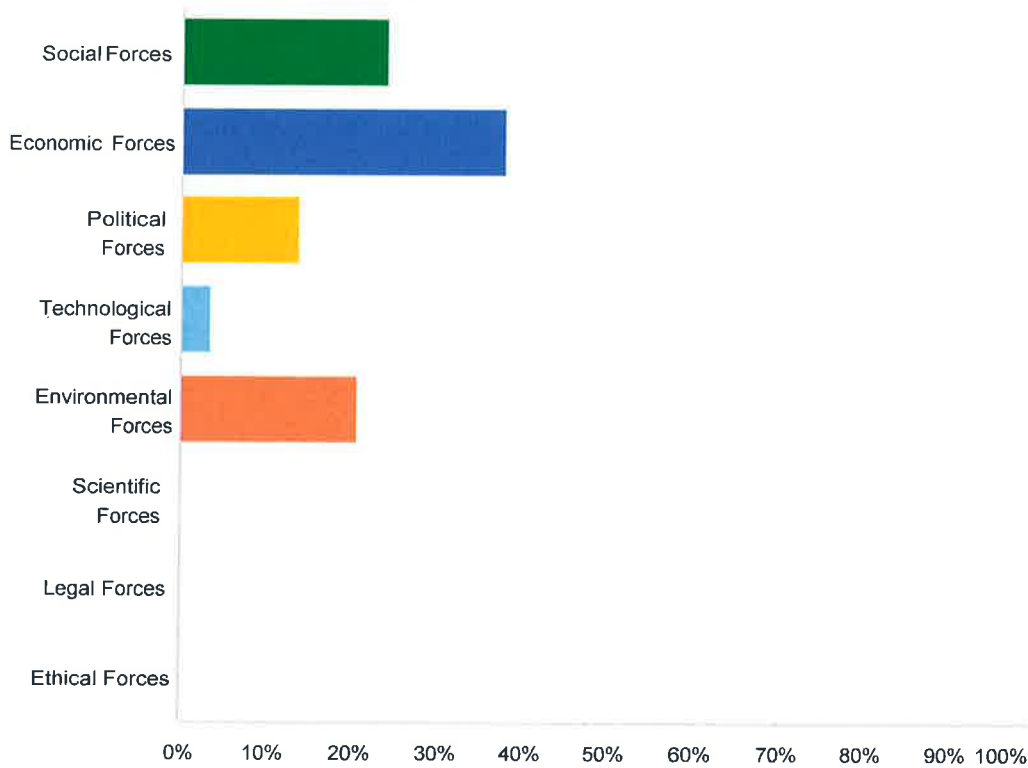
Q2 Please list all forces of change, outside of your control, that affect the local public health system or community that has occurred recently or may occur in the future. What forces, trends, and/or characteristics are occurring local in Will County? In Illinois? Nationally? Globally?

Answered: 27 Skipped: 9

ANSWER CHOICES	RESPONSES	
Social Forces:	85.19%	23
Economic Forces:	96.30%	26
Political Forces:	85.19%	23
Technological Forces:	81.48%	22
Environmental Forces:	81.48%	22
Scientific Forces:	66.67%	18
Legal Forces:	62.96%	17
Ethical Forces:	62.96%	17

Q3 #1 Force - Most impact on the health of the Will County community

Answered: 29 Skipped: 7



ANSWER CHOICES	RESPONSES	
Social Forces	24.14%	7
Economic Forces	37.93%	11
Political Forces	13.79%	4
Technological Forces	3.45%	1
Environmental Forces	20.69%	6
Scientific Forces	0.00%	0
Legal Forces	0.00%	0
Ethical Forces	0.00%	0
TOTAL		29

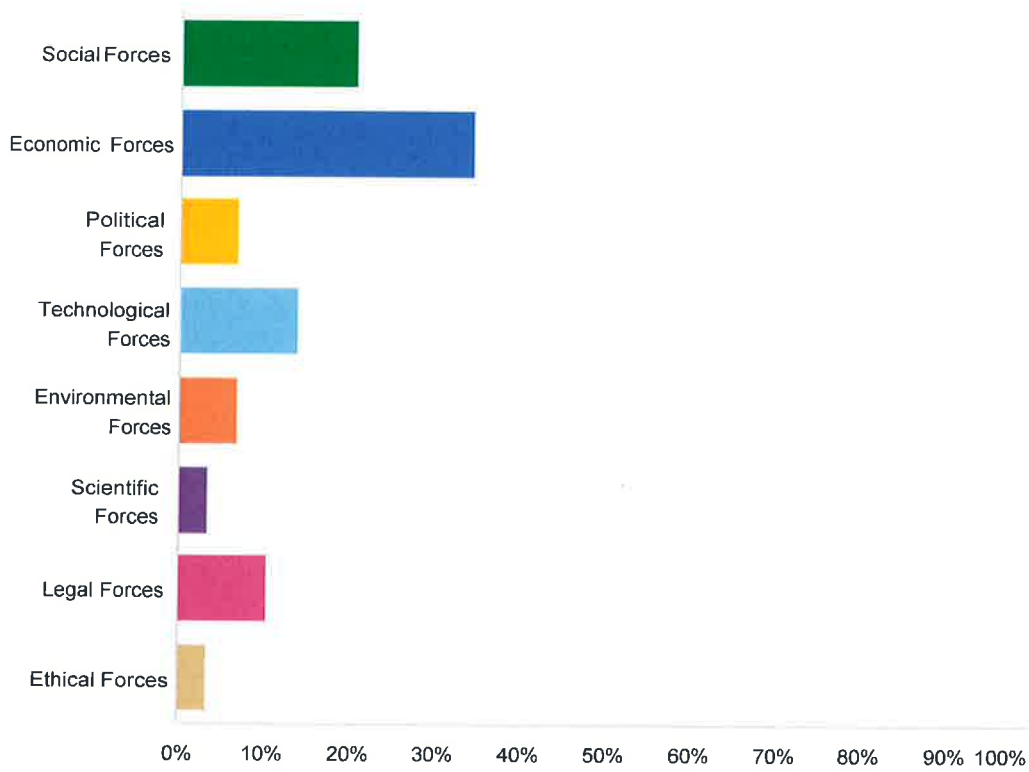
Q4 #1 Force - Most impact on the health of the Will County community (cont.)

Answered: 27 Skipped: 9

ANSWER CHOICES	RESPONSES	
What threats are posed with the force that you identified?	100.00%	27
What opportunities arise from that threat?	85.19%	23

Q5 #2 Force - Second most impact on the health of the Will County community

Answered: 29 Skipped: 7



ANSWER CHOICES	RESPONSES	
Social Forces	20.69%	6
Economic Forces	34.48%	10
Political Forces	6.90%	2
Technological Forces	13.79%	4
Environmental Forces	6.90%	2
Scientific Forces	3.45%	1
Legal Forces	10.34%	3
Ethical Forces	3.45%	1
TOTAL		29

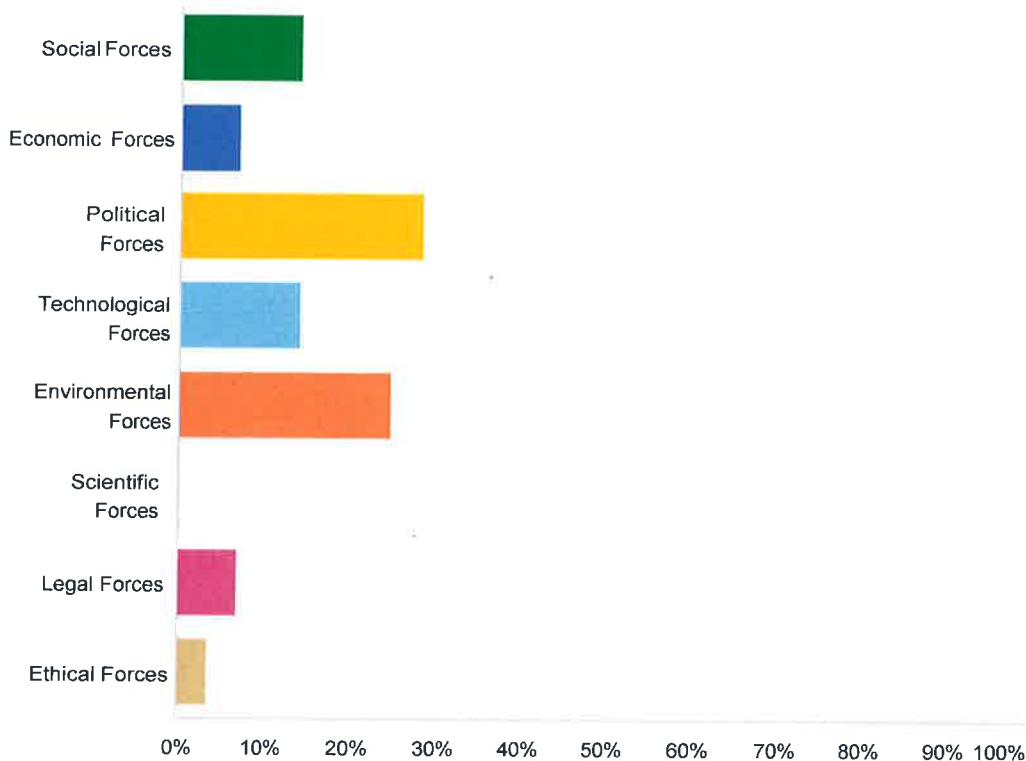
Q6 #2 Force - Second most impact on the health of the Will County community (cont.)

Answered: 27 Skipped: 9

ANSWER CHOICES	RESPONSES	
What threats are posed with the force that you identified?	100.00%	27
What opportunities arise from that threat?	81.48%	22

Q7 #3 Force - Third most impact on the health of the Will County community

Answered: 28 Skipped: 8



ANSWER CHOICES	RESPONSES	
Social Forces	14 29%	4
Economic Forces	7 14%	2
Political Forces	28 57%	8
Technological Forces	14 29%	4
Environmental Forces	25 00%	7
Scientific Forces	0 00%	0
Legal Forces	7 14%	2
Ethical Forces	3 57%	1
TOTAL		28

Q8 #3 Force - Third most impact on the health of the Will County community (cont.)

Answered: 25 Skipped: 11

ANSWER CHOICES	RESPONSES	
What threats are posed with the force that you identified?	100.00%	25
What opportunities arise from that threat?	80.00%	20

Q9 Please explain if any of the forces, that you ranked, will impact (positively or negatively) equal opportunity for health and access to care based on race, ethnicity, gender, age, sexual orientation, socioeconomic status, and/or education level?

Answered: 23 Skipped: 13