

ANNUAL REPORT

2020



Our Mission to the People of Will County:

To prevent disease and promote a healthier environment for all residents, business operators, and visitors. Our agency of professionally trained staff work cohesively to assure public health and safety measures are maintained through services and programs the department provides based on the needs of the community.



Welcome to the Will County Health Department and Community Health Center's Annual Report for 2020. Typically, I reference the past year with both positive events as well as some of the challenges we have faced. Honestly, this past year was filled with challenge after challenge. The COVID-19 Global Pandemic plunged public health, without ample preparation, into a comprehensive emergency response mode. The response began with an overwhelming number of questions, concerns, and logistical issues with the disaster proclamation issued by the governor. These inquiries came from the healthcare industry, schools, long-term care facilities, businesses, faith-based leaders, elected officials, and the general public. None of us knew much about this new virus, nor just how deadly it would become. The response quickly moved to preparing a contact tracing staff that would include over one hundred additional staff just for this part of the effort. There was also new information daily from CDC and the Illinois Department of Public Health (IDPH) regarding the response.

Our agency has an emergency response plan and method for activation; however, we could not initiate it because we were unable to occupy the same room. We initiated all virtual communication. Our agency was also moved to a virtual work environment due to the rampant transmission. Simultaneously, we saw our first index case of COVID amongst the staff, and it soon spread to about 25 other staff. The governor issued a stay-at-home order, and the Assistant Executive Director (Elizabeth Bilotta) and I were the only staff at the Joliet campus. This went on for weeks. Fortunately, with the preparations our ITT team had made previously, we were able to conduct our programs virtually. This was crucial since we were required to continue all our regular 38 programs in addition to this massive response. None of our funders, including IDPH relaxed their program standards or quotas for us.

Of course, amid this our new building was completed and we needed to plan our move. We had to consider social distancing, timeliness due to program needs, and staffing shortages due to COVID-19. Not too many individuals had the experience of planning and building a new facility, and not everyone could say they actively responded to a global pandemic. We get to say we did both at the same time!

The emphasis in response soon included planning mass vaccination efforts in addition to contact tracing. Within weeks of the ever-increasing case count, the United States had a vaccine that had very promising results, and soon two other vaccinations as well. For the next several months we aligned our efforts with up to 60 community partners-hospitals, urgent care clinics, corporate pharmacies, local pharmacies, local fire departments, and local universities to implement the largest vaccine initiative in our nation's history. We continue this effort today.

To date, 51% of Will County residents have been vaccinated, with efforts continuing for several months. Our goal is to vaccinate at least 75% of the population in Will County. If there are people that are not vaccinated COVID-19 will continue to infect people, and possibly mutate into something more devastating. If you have been vaccinated- thank you. If you have not, and are medically eligible, please get vaccinated.

Understandably, this past year has put public health at the forefront of our lives. Recommendations public health has been making for decades are now common mantras. Wash your hands! Cover your mouth! Wipe down frequently touched services! Use hand sanitizer! Stay home when you are sick! Get healthy to avoid illness! These are all great public health messages and they work!

Whether it is COVID-19, the flu, or any other communicable disease, let's remember what we learned in this pandemic- germs spread, and quickly. Your overall health status matters in terms of being susceptible to illness, and what you do or don't do affects other people in your community. I am confident we will prevail in the fight against this pathogen, but at some point (hopefully a long way off) there will be another. My hope is that public health continues to be in the forefront of our lives, and greater understanding and emphasis is realized to improve the overall health of our communities!

Thank you to the Will County Board of Health who truly understands our mission and supports our initiatives, our efforts, and the staff. The support this past year was most important. The residents of Will County are fortunate to have such dedicated people that give of their time for the good of our community.

I hope you enjoy this year's edition, sorry it's a little late but we have been very busy!

My best in public health,



Susan Olenek, MAOL, PHR Executive Director
Will County Health Department
& Community Health Center

GOVERNING BOARDS

Will County Health Department Board of Health

The Board of Health meets on the 3rd Wednesday of each month at 3 p.m.

501 Ella Avenue, Joliet, IL 60433 in the Community Room (virtually during pandemic)

JAMES E. ZELKO, B.S.	PRESIDENT
BILLIE TERRELL, PH.D., ACSW	VICE-PRESIDENT
JOHN CICERO, MHA	SECRETARY
DONALD GOULD, J.D.	MEMBER
PAUL HERTZMANN, CFO, M.A.	MEMBER
GARY R. LIPINSKI, M.D.	MEMBER
TEENA MACKEY	MEMBER
GEORGE PITSILOS, M.D.	MEMBER
EDGAR RAMOS, PSY. D.	MEMBER
NANCY REILAND, DNP, R.N.	MEMBER
SCOTT SODERQUIST, D.D.S.	MEMBER
MARGARET TYSON	MEMBER

Will County Community Health Center Governing Council

The Governing Council meets on the 1st Wednesday of each month at 5 p.m.

1106 Neal Avenue, Joliet, IL 60433 in the Community Room (virtually during pandemic)

MARIE LINDSEY, PH.D, APRN	CHAIRMAN
CINDY BRASSE, R.N.	VICE-CHAIRMAN
DEBORAH KORNACKER, DNP, M.S.,	SECRETARY
ALAN DYCHE	TREASURER
VERNICE WARREN	MEMBER
JUDITH EASLEY	MEMBER
PAUL LAURIDSEN	MEMBER
GEORGE MORA	MEMBER
EDITH CLINE-KABBA	MEMBER

Core Values

RESPECT INTEGRITY PROFESSIONALISM QUALITY DEDICATION



WCHD staffers took shuttle busses to parking lots during construction of the new WCHD building.
(Pre-Pandemic Photo)



Both in the old WCHD building (left and right) and the new WCHD building (center), WCHD staffs and visitors wore masks during the COVID-19 pandemic.

TABLE OF CONTENTS

STRATEGIC CORE VALUES

“Deliver sustainable programs and policies in response to the public health needs of the community.”

Integrity

13-14

Adult Mental Health Services
Correctional Mental Health
Adult Case Management Program
Transition from Homelessness (PATH)
Child and Adolescent Mental Health Services
SASS Screening/Mobile Crisis Response
Y.E.S.S. Program

Dedication

15-16

Birth and Death Records
Emergency Preparedness and Response
Medical Reserve Corps
Immunizations
Tobacco Control and Prevention
West Nile/Mosquito Mitigation
Genetics
MAPP Collaborative

Respect

17-18

WIC
Better Birth Outcomes
HIV Prevention
STD Surveillance
PrEP Clinic
HealthWorks of Illinois
High-Risk Case Management and APORS
Teen Pregnancy Prevention
AOK (All Our Kids) Early Childhood
Network

TABLE OF CONTENTS

CONTINUED....

<i>Quality</i>	<i>19</i>	Food Protection Safe Water Wells and Septic Systems Body Art and Tanning Facilities Safe Swimming Facilities
<i>Professionalism</i>	<i>20-21</i>	Medical Services Dental Services Vision and Hearing Radon Immunization Travel Clinic Childhood Lead Poisoning Prevention Epidemiology and Communicable Disease Medication Assisted Treatment/Substance Use Disorder
<i>Funding Sources</i>	<i>22</i>	
<i>Balance Sheet</i>	<i>23</i>	

2020: YEAR OF COVID-19 AT WCHD

The Will County Health Department and Community Health Center went into the year 2020 anticipating the move into a brand new main building at the 501 Ella Avenue location in Joliet. But it soon became clear that 2020 would be remembered for something no one could have imagined: The COVID-19 global pandemic.

Suddenly, the long-term future, including additional work on the 2018-2023 Strategic Plan, was no longer the focus. While WCHD moved into the new building in the spring as scheduled, the public was not able to simply come and go as if times were normal. They were not. Instead, it was all about the immediate future, and navigating our way through the pandemic.

“COVID affected so many people in so many ways in their personal and working lives,” said Tom Casey, WCHD Environmental Health Director. “Some were affected by the disease directly, and some had to quarantine due to possible exposure. But the EH staff came together as a team, and we performed our duties across all three offices to meet the demand of investigating over 600 COVID complaints, plus educating the public on guidelines to help slow the pandemic, and at the same time maintaining all of our programs and serving the needs of our customers and the public.”

With the new building closed to visitors and at times, staff; there were certainly many changes to daily business. “Our programs adapted,” said FHS Director Georgia VanderBoegh. “Our Nurse Case Managers, who had been going out on home visits for our BBO (Better Birth Outcomes), HRIF (High Risk Infant Follow-up), and Lead Poisoning Prevention Programs were now communicating with clients via phone calls and texts. In WIC’s Supplemental Nutrition Program, the staff completed all registration and nutrition education by phone. Also, WIC clients had to come to the new building starting in August to pick up their new EBT (Electronic Benefit Transfer) cards, so WIC staff went out to the clients’ cars or met them just inside the building.

“For Immunizations,” VanderBoegh also explained, “clients were screened at the front door and then taken to vaccination rooms. All FHS staff helped to keep all of our programs running, and many volunteered to work the COVID-19 Hotline, and other COVID-19 related activities.”

Behavioral Health Division Director Dr. Joseph Troiani pointed out that in many situations, preparations already in the works with no idea the pandemic was coming came in extremely handy. “Our division was able to, within days, transition from providing in-office clinical services to tele-behavioral health clinical services, with very little disruption for those receiving those services. This response was seamlessly achieved due to the restructuring of the administrative and clinical systems, which had occurred during the prior two years.

“Due to that work already done,” Dr. Troiani continued, “the division was able to respond to the governor’s executive orders in March of 2020 by offering those tele-behavioral health services to those we served by having staff work remotely. It was also during this time that we developed the “pandemic wellness checklist” to be used with those being seen for clinical services.”

Meanwhile, the Community Health Center not only had pandemic concerns on how it affected their staff, but also the fact that as an FQHC, they needed to remain available to the public. While the WCHD building could have its doors locked, the public needed to be able to be treated at the CHC. Each patient was screened at the door for both symptoms and body temperature. But as CHC Chief Executive Officer Mary Maragos recalls, her staff was also greatly helped by the use of Telehealth.

2020: YEAR OF COVID-19 AT WCHD

The WCHD and CHC staff fought through the year of COVID-19 as the era of the new building (foreground) replaced the era of the old building (background).



“In the few months before the Pandemic, the Will County Community Health Center was planning and preparing for telehealth visits,” Maragos recalls. “By February 2020, we were ready to implement them. Approximately 45% of all visits were transitioned to telephone, and later we utilized a software so the patients and providers could see each other as well. Our visit numbers actually went up due to the convenience. We quickly mobilized to perform COVID testing throughout Will County, at shelters, communal living sites, businesses, and schools, over 8,500 tests in all, at no charge to the patients. To keep our patients and staff safe, we screened all patients and staff for COVID symptoms prior to entry, erected laminate barriers at workstations, enforced social distancing, and limited access to visitors. We provided patients with free blood pressure and blood sugar testing devices so they could continue to maintain their health while at home. We are proud to say that throughout the entire year, there was no direct transmission of COVID virus between any patient or staff member.”

Specialized WCHD offices such as Emergency Preparedness & Response and Epidemiology saw their entire daily perspective change as soon as the pandemic arrived. “Our program saw a shift in focus from planning FOR Public Health Emergencies to responding to A Public Health Emergency,” said EP&R Coordinator Katie Weber. “We activated plans, brought in volunteers, and adjusted to the changing environment on a continuous basis. In the beginning of COVID EP&R opened and staffed the COVID hotline, answering as many as 400 calls per day. At the end of 2020, EP&R staff worked with the hospitals in the county to get the necessary vaccines to the frontline workers, and opened up the first WCHD COVID vaccination clinic.”

“With our job of studying the data concerning the frequency and spread of illnesses, this was completely unlike anything we all had seen in our careers,” said WCHD Epidemiologist Alpesh Patel. “From the early problems of what was happening in long-term care facilities, to the need to establish and hire a Contact Tracing staff, we were challenged every single day for the entire year. Will County Communicable Disease and Contact Tracing team worked tirelessly interviewing people with COVID-19 to identify everyone they had close contact with during the time they may have been infectious, notifying contacts of their potential exposure, referring contacts for testing, monitoring contacts for signs and symptoms of COVID-19, and connecting contacts with services they might need so they can remain at home during the self-quarantine period.”

2020

WELCOMES NEW BUILDING



THE COVID CHALLENGES OF 2020



THE COVID CHALLENGES OF 2020



INTEGRITY

Adult Mental Health Services

The Adult Mental Health Program provides outpatient community mental health services for Will County residents who have symptoms of serious mental illness and in some cases with concurrent substance abuse, that are serious obstacles to community functioning. In FY2020, BH served 2,033 adult clients for a total of 10,550 clinical services for all adult programs.



Members of WCHD BH team: Dr Scott DuBois, Dr. Rita Gray, Dr. Joseph Troiani

Correctional Mental Health

Although community safety does take precedence, when carefully and thoroughly assessed, many low-risk offenders can be treated and effectively supervised within the community, either as an alternative to incarceration or upon release from a correctional facility. This Forensic Program is one part of a supervision network that involves members of the offender's community, helping an offender abstain from abusive behavior.

Adult Case Management Program

BH provides case management services that are client-centered, individualized, short to long term in duration, and range from low to high in-service intensity levels. This is for adult clients who are seriously and/or chronically mentally ill, or who may be at risk of becoming chronically mentally ill.



Kiosk in new WCHD Building gives visitors information about current health issues and department locations

Transition from Homeless (PATH)

The PATH (Projects for Assistance in Transitioning from Homelessness) Program serves those adults who may be homeless or at risk of becoming homeless, and who have a severe mental illness or perhaps a co-occurring substance use disorder. The primary source of referrals for the PATH Program comes from Catholic Charities' Daybreak Shelter, Morningstar Missions, and inpatient facilities.



BH Staff has one of their final meetings in their old building conference room.

INTEGRITY



Visiting Girl Scouts offering cookies to COVID-19 vaccine volunteers.

Child and Adolescent Services

These programs work to provide a range of mental health services to the youth of Will County who are at risk for hospitalization or extrusion from the community as a result of a severe emotional disturbance or a severe and persistent mental illness. The overall goal of intervention is to maintain or improve a child's level of functioning in his or her own family and community. In FY2020, the Behavioral Health Program served 2,358 child and adolescent clients for a total of 27,586 clinical services.

SASS Screening/Mobile Crisis Response (MCR)

The SASS (Screening and Assessment Services for Children and Adolescents) Program provides screenings, assessments, and treatments to any child or adolescent who may have been at risk of psychiatric hospitalization, and who was eligible for public funding under any program funded by one of the three collaborating departments. Since MCR took effect on October 1, 2018 this program has been expanded to a lifespan model, serving all ages. Services are available 24/7 for Will and Grundy County individuals who have Medicaid or Medicaid Managed Care and are experiencing a psychiatric crisis.

Y.E.S.S. Program

With efforts to improve academic performance and socioemotional functioning, the Y.E.S.S. (Youth Experiencing Success in School) Program is designed to focus on students who experience challenges to their academic progress and well-being. Students learn about healthy coping skills, to reflect on the consequences of their lifestyle choices, and are empowered to build a positive character. The WCHD's participation in this program provides individual and group counseling and outpatient services at both Joliet Township High School District campuses.

Individual Care Grants

A financial grant provided by the State of Illinois, the Individual Care Grants assists parents or private guardians in paying the costs of residential care for mentally ill children under the age of 21. With approval, the grant may also be utilized to provide in-home supports so that the child may remain in his or her home, school, and community.



DEDICATION

Birth and Death Records

The Will County Health Department is the official site of the Local Registrar of Vital Records for all births and deaths that occur in Will County. For FY2020, Birth and Death Records recorded 4,351 births and 5,048 deaths.



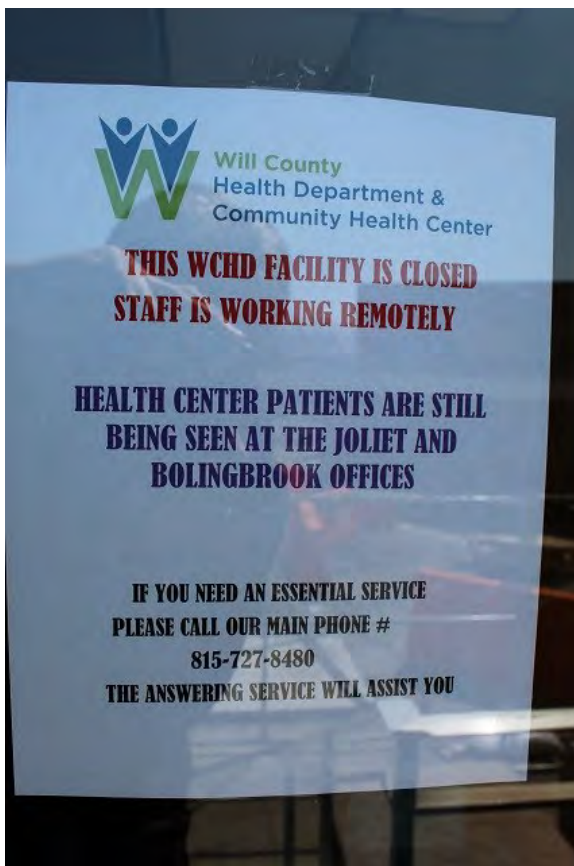
WIC Front Desk at old WCHD Building.

Emergency Preparedness and Response

The EP&R (Emergency Preparedness and Response) program develops and exercises the plans for responding to large scale Public Health Emergencies. EP&R utilizes strategies for medicating the entire population of Will County within a 48-hour time frame. This program also houses the Medical Reserve Corps volunteers, a group of professionals with both medical and non-medical experience. The volunteers train to respond to Public Health Emergencies and also assist with health fairs and other projects within the program.

Medical Reserve Corps

Volunteers 18 and older can participate in the MRC (Medical Reserve Corps) through the Health Department's EP&R office. In addition to assisting WCHD in public health emergency responses, special MRC projects can include preparing care packages to be sent overseas to military personnel over the holiday season, assisting the Northern Illinois Food Bank with their Mobile Food Pantries, and other projects that improve the well being of the Will County Community.



The Covid-19 Pandemic brought about numerous adjustments during the year 2020 for WCHD

Immunizations

Immunizations can protect you and your family from serious diseases such as Tetanus, Measles, Chickenpox, and Pneumonia. People of all ages should make sure they are current with their vaccinations. The WCHD regularly offers immunization clinics at three locations: Joliet, Bolingbrook, and Monee. Immunizations are also provided in the community to high-risk groups. For FY2020, the Will County Health Department Immunizations Program served 2,636 clients and delivered 5,375 vaccinations, 921 of which were Influenza vaccines.



First shipment of COVID-19 vaccine arrives in December of 2020.

DEDICATION



Tobacco Control and Prevention

Family Health Services' Tobacco Control and Prevention offers a variety of programs and services designed to decrease tobacco use rates, keep youth tobacco-free, and eliminate exposure to secondhand smoke. These programs are made available to the Will County community, including schools and businesses. The list of current initiatives includes: policy advocacy with tobacco-free parks and worksites, creating partnerships with healthcare providers to increase referrals to the Illinois Tobacco Quitline, and strengthening local school tobacco-use policies to include e-cigarette vaping devices. Also offered are tobacco prevention materials, including educational visual aids and videos through the Tobacco Prevention Lending Library. In FY 2020 prevention staff completed 43 investigations, issued four citations to businesses found to be in violation of the Smoke-Free Illinois Act, provided 292 community partners and businesses with prevention education, and implemented one new local tobacco free policy.



West Nile Virus/Mosquito Mitigation

The Environmental Health Division takes a lead role in county efforts to combat outbreaks of West Nile Virus (WNV), a mosquito-borne virus can cause mild illness or severe symptoms. Since no vaccine against WNV is available, mosquito abatement is one of the main tools we use to protect Will County residents.

Genetics

The Genetics Program provides education, referrals, follow-ups, and advocacy to the people of Will and Grundy Counties. Eligible families are referred to the program from both the Illinois Department of Public Health and the WIC/Case Management Program. This may be necessitated by abnormal newborn screenings, failed hearing screenings, and family histories that involve Sudden Infant Death Syndrome, genetic conditions, or reproductive risks. The program is voluntary.



Will County Mobilizing for Action Through Planning and Partnerships

The Will County Health Department's involvement in MAPP is the result of two specific requirements that produced one organization. Every five years local health departments in the state of Illinois are required to complete a needs assessment and community health plan, known as IPLAN (Illinois Project for Local Assessment of Need). Also, hospitals in Illinois are required to complete a Community Health Needs Assessment (CHNA) every three years. In Will County, the resulting MAPP Collaborative consists of a broad cross section of organizations and individuals. MAPP is designed to provide a community-driven, comprehensive framework for assessing community needs and addressing strategic issues. This process is completed every three to five years.

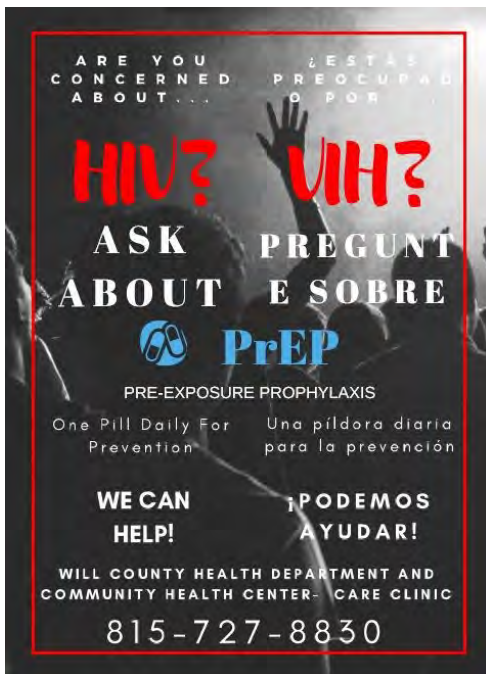
RESPECT

WIC

WIC (Women, Infants, and Children Supplemental Nutrition Program) provides assistance from nutritionists and nurses for mothers, from their pregnancy to the child's fifth birthday. For FY 2020, WIC had an average of 6,425 active participants per month. This included an average of 2,960 children, 1,930 infants, and 1,545 moms. WIC provides supplemental healthy foods, nutrition education, breastfeeding counseling and support, and health referrals from nutritionists and nurses.



Registered Nurse Case Managers for APORS and BBO Programs: Jodie Schweitzer, Brenda Burmeister, May Liang, Nicole Collins, Filomena Lamdagan, and Eskrika Crosby.



Better Birth Outcomes

Better Birth Outcomes (BBO) is a prenatal education and support program for pregnant woman at risk for preterm deliveries or complications. Services are provided by Registered Nurses knowledgeable in prenatal and health care, and home visits are included. BBO staff maintain communication with the client's prenatal provider.

HIV Prevention

Family Health Services' HIV/STD programs ensure individuals at high risk for acquiring or transmitting HIV or other STD's are provided with quality HIV/STD prevention and care services. During FY 2020, 183 High Risk HIV tests were conducted.

STD Surveillance

Family Health Services' Sexually Transmitted Disease (STD) program keeps track of positive cases of Chlamydia, Gonorrhea, and Syphilis. Surveillance procedures of these STD's, also referred to as STI's (Sexually Transmitted Infections), follow strict procedures to ensure confidentiality. For FY 2020, the program documented 2,635 Chlamydia cases, 912 Gonorrhea cases, and conducted 191 Syphilis investigations.

PrEP Clinic

The PrEP Clinic brings together the staffs of the Community Health Center, as well as the Family Health Services' HIV and STD Program. The PrEP (Pre-Exposure Prophylaxis) Clinic's treatment includes a daily pill and very specific follow-up visits, for the purpose of preventing the transmission of HIV. 118 PrEP Clinic visits took place in FY 2020.



Dr. Jennifer Byrd poses with Health Educators Kendra Coleman & Gloria Flores, along with Delta Sorority volunteers (Pre-Pandemic Photo)

RESPECT

HealthWorks of Illinois

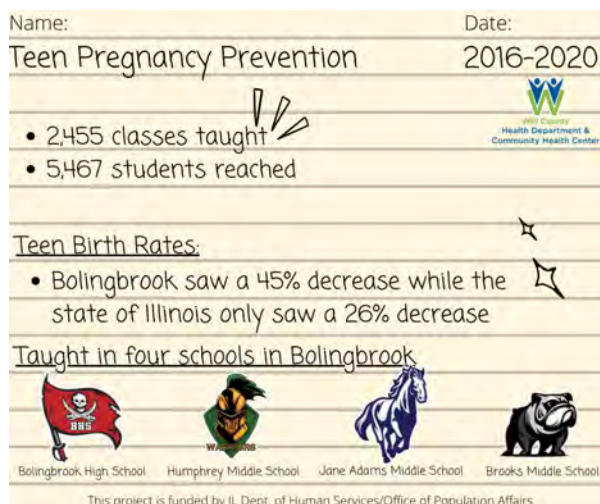
This comprehensive health care program is for children under the age of 21 who are in custody of the Illinois Department of Children and Family Services (DCFS). This health care system is designed to meet the medical needs of children in both Will and Grundy Counties who are in foster care. A required initial physical exam identifies immediate health care needs for children in the program. During FY 2020, the program averaged 223 children age 0-6 and 500 children ages 6 and up.



*Family Health Services
waiting area in new WCHD
Building*

High-Risk Case Management and APORS

These programs help assure easier access to medical care for eligible clients. Adverse Pregnancy Outcomes Reporting System, part of HRCM, is a high-risk infant follow-up program. It is designed to minimize disabilities in high-risk infants by identifying, as early as possible, conditions requiring further evaluation, diagnosis, and treatment. For older children, including those in DCFS foster care, the program addresses access to medical services, transportation, housing, food, and mental health and substance use service. During the pandemic dominated FY 2020, these programs combined, including the Better Birth Outcomes program, conducted 460 in person visits and 275 home visits prior to the March 16th change to all visits being over the phone. After that date, 4,002 telephone calls were made by these programs.



AOK (All Our Kids) Early Childhood Network

The AOK Network is a community-based collaboration that is committed to developing a high-quality, well coordinated, easily accessible system of care to promote positive growth and development for children up to five years of age, as well as their families. Examples of services provided are prenatal care, wellness checkups, parenting education, and specialized services such as speech therapy, physical therapy, or home visits.

Teen Pregnancy Prevention

In July 2020, the IL Department of Human Services (IDHS) funded the Will County Health Department to coordinate a Teen Pregnancy Prevention Program within the city of Joliet. This new three-year grant will be prioritizing communities with high rates of teenage births and sexually transmitted infections (STIs) among African American and Hispanic populations. Joliet's High School District 204 accounts for over 50% of teen birth in all of Will County. This new evidence-based initiative specifically focuses on reducing the rate of teen pregnancy, HIV, and other sexually transmitted infections, as well as risky sexual behaviors among adolescents. This grant provides our agency with funding for programs, curriculum, training, and community health educators to implement evidence-based teen pregnancy prevention curricula in Joliet Central High School and Joliet West High School.

QUALITY

Food Protection

Environmental Health (EH) inspectors focus on managerial control of all phases of food handling: from receiving, to storage, to preparation and serving. This includes permanent facilities as well as temporary facilities established for specific events, mobile food service units, and cottage food operations. For FY2020, EH conducted 5,843 food program activities.



EH spends hours outside every year keeping water supplies safe.

Body Art and Tanning Facilities

EH inspectors assure customer health and safety by making sure those operating body art businesses use sterilized equipment and are trained both as artists and in their knowledge of blood borne pathogens. Those running tanning businesses must focus on safety and sanitation in areas such as keeping tanning beds clean and having proper safety equipment such as eye shields, functioning timers, and emergency “kill” switches. For FY 2020, EH conducted 24 body art inspections and 27 tanning facility inspections.

Safe Swimming Facilities

After receiving a license from the IDPH, all those wishing to operate a swimming or bathing beach facility in Will County must file an application with the WCHD that includes the appropriate annual inspection fee. At pool facilities, EH inspectors check for proper water chemistry, equipment, and locker room cleanliness. At beach facilities, they inspect for proper cleanliness and test for bacteria levels in the water. For FY 2020, EH conducted 307 pool inspections and 46 beach inspections, along with 76 inspections of public swimming facilities for their state licenses.



EH's Trisha Kautz and Courtney Orlando during move.

Safe Water Wells and Septic Systems

The EH Safe Drinking Water Program assures safe, proper construction of water wells providing bacteria-free, low-nitrate water to homes from a safe supply system. For larger facilities, such as schools, the Potable Water Supply Program checks for bacteria free, low-nitrate, safe and sanitary water out of a properly constructed well. The Private Sewage Program assures proper installation of wastewater treatment systems that are in line with all codes and issued permits. For FY2020, EH conducted 1,392 water program activities, 935 sewage program activities, issued 137 septic permits and 117 well permits. The EH lab also analyzed 6,575 sewage discharge samples.



EH hires interns every summer to help with pool and beach inspections (Pre-Pandemic Photo.)

PROFESSIONALISM

Medical Services

The Will County Community Health Center (WCCHC) provides a medical home to help residents manage their total health care, in addition to helping with cultural and language needs. Highly trained and compassionate nurses and staff members work closely with doctors to provide Family Practice, Pediatrics, OB/Gyn services, Family Planning, and Laboratory services. Most insurances, along with Medicaid, are accepted; and sliding fee scales are available for all patients. For FY 2020, WCCHC provided 28,281 medical services visits, 10,704 behavioral health visits, 2,315 substance use disorder visits, 3,794 dental visits, and 226 optometry visits, serving a total of 15,415 unduplicated patients.



*Will County Community Health Center
Dental Team*

Dental Services

Dental Services at the WCCHC are provided to those with Medicaid, as well as low income and non-insured residents. DentaQuest is accepted for Dental Medicaid Managed Care and sliding fee scales are offered as well. Services include comprehensive oral exams, school exams, dental cleanings for children and adults, sealants and fluoride treatments for children, deep cleaning to treat periodontal disease, fillings, and simple extractions. There is also the Mobile Dental Unit, which brings the Dental Team to Will County residents at locations such as schools, daycares, shelters, food pantries, and senior homes. During FY2020, WCCHC Dental handled 3,794 dental visits and 34 Mobile Dental Unit visits. The mobile program

Vision and Hearing

The Family Health Services Division provides Vision and Hearing screenings for school age children three and older through adults. The main goal of the vision and hearing program is early detection of vision and hearing problems in children. Certified technicians provide the screenings at schools, in preschool settings, and once a month at the Health Department by appointment under regular conditions. The vision screenings are not meant as a substitute for a professional examination by an eye doctor, as the WCHD does not have an optometrist on staff. During FY2020, 9,659 vision screenings and 12,657 hearing screenings were conducted.

Radon

You cannot see, smell, or taste radon. But, this dangerous gas comes from decaying uranium underground and is believed to cause many thousands of deaths each year from Lung Cancer. Year round and especially during January's Radon Awareness Month, EH invites you to ask questions about radon, and purchase home testing kits from our three WCHD branches that can let you know if your home has detectable levels of radon gas.



During January of each year, Radon Action Month allows EH to educate the public on the dangers of radon gas.

PROFESSIONALISM

Immunization Travel Clinic

Will County residents planning to travel internationally are encouraged to contact the Travel Immunization Clinic for a consultation and travel vaccinations. Travel consultations include education on how to stay well on their trip, along with recommendations for vaccinations and/or medications specific to the countries they will visit. For FY2020, this clinic provided consultations to 82 people, and administered 120 travel immunizations/medications.



The WCHD Immunization Travel Clinic checks out prospective travelers' locations for possible disease outbreaks.

Lead Poisoning Prevention

This program was established for the prevention, screening, diagnosis, and treatment of lead poisoning. This includes the elimination of sources of poisoning through research and educational activities. The Lead Program provides a range of both in home and community prevention services to Will County children, their families, and others with an interest in preventing lead poisoning. For FY2020, 15,181 lead cases were processed.



WCHD Epidemiology handles surveillance, field investigations, and education of the public on preventing communicable diseases. (Pre-Pandemic Photo)

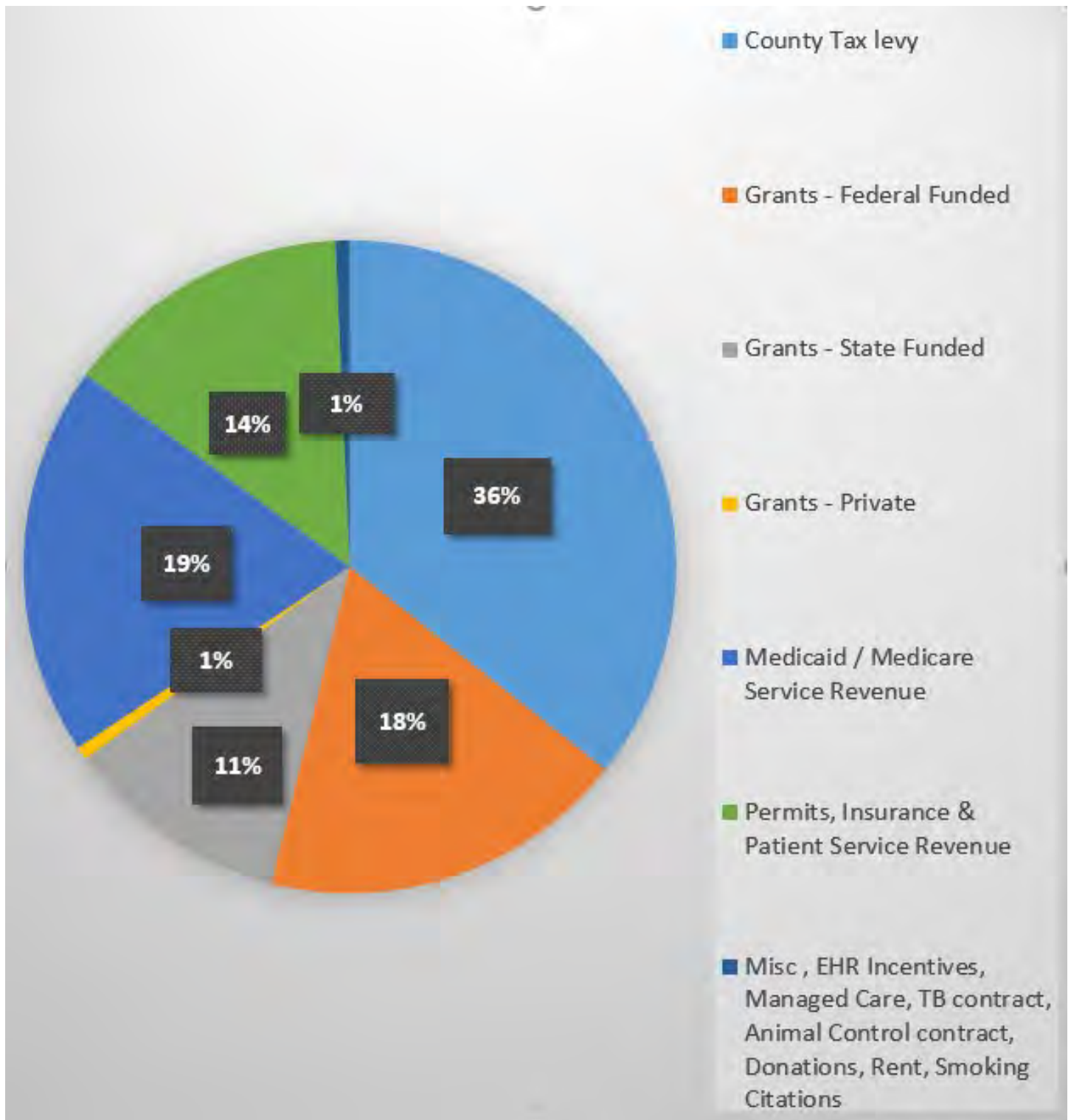
Epidemiology and Communicable Disease

The goal of the Epidemiology and Communicable Disease Program is to protect and promote the health of Will County residents, through surveillance, field investigations, health assessments, and epidemiologic studies. The program is designed to advise patients, as well as educate patients and the public on how to prevent communicable diseases. These can be seasonal situations such as Influenza or Norovirus, or sudden surprises such as possible cases of Meningitis or Smallpox.

Medication Assisted Treatment/Substance Use Disorder

The Medication-Assisted Treatment (MAT) approach to the treatment of Substance Use Disorders is wherein both medication and Substance Abuse Counseling are used towards the goals of sobriety and recovery. The medications are Vivitrol (a monthly injection for alcohol and opioid addiction) and Suboxone (a daily oral medication for opioid addiction). The use of these medications in combination with substance abuse counseling has doubled the rate of opioid abstinence and recovery. The WCCHC has five providers who are able to prescribe these medications for our patients.

FUNDING SOURCES



*Revenue based on CFY19 financial reports, excluding Transfers-In. Exclusion of Transferred-In Revenue is consistent with revenue presented in prior audited financial statements.

This is the most current information available regarding funding sources. Our FY2020 financial information is not available at print.

BALANCE SHEET

FY 2019 Financial Summary General Operating Fund 207

REVENUE AND EXPENDITURES (unaudited, GAAP basis)

December 1, 2018 - November 30, 2019

REVENUE SOURCES

Health Tax Levy	\$10,018,351.47
Federal, State and Local Grants	8,465,525.37
Fees and Reimbursables	9,474,214.91
Miscellaneous Contributions and Revenues	636,168.55
Total Revenue	\$28,594,260.30

EXPENDITURES

Salaries	\$15,642,813.18
Fringe Benefits	7,291,059.23
Supplies, Contracted Services, Capital Outlay	4,760,432.76
Total Expenditures	\$27,694,305.17

GENERAL OPERATING FUND BALANCE

December 1, 2018	\$ 8,988,637.14
Variance due to timing / accruals	(894,769.90)
Prior Year Ending Cash Balance	\$ 8,093,867.24
Revenues Over Expenditures	899,955.13
November 30, 2019	\$ 8,993,822.37

This is the most current information available regarding funding sources. Our FY2020 financial information is not available at print.



Main Office Location

501 Ella Avenue
Joliet, IL 60433
MAIN (815) 727-8480
FAX (815) 727-8484



For more information on our programs, please visit our newly updated
website at www.willcountyhealth.org

DIVISION CONTACT INFORMATION

Behavioral Health	Community Health Center	Environmental Health	Family Health Services
501 Ella Avenue	1106 Neal Avenue	501 Ella Avenue	501 Ella Avenue
Joliet, IL, 60433	Joliet, IL 60433	Joliet, IL, 60433	Joliet, IL 60433
815-727-8521 (ph)	815-727-8670 (ph)	815-727-8490 (ph)	815-727-8484 (ph)
815-727-8436 (fax)	815-727-8484 (fax)	815-740-8147 (fax)	815-727-8677 (fax)

BRANCH OFFICE LOCATIONS

Eastern Branch
5601 W Monee-Manhattan Road
Monee IL 60449
Ph: 708-534-5721
Fax: 708-534-3455

Northern Branch
323 Quadrangle Drive
Bolingbrook IL 60440
Ph: 630-679-7020
Fax: 630-846-0668