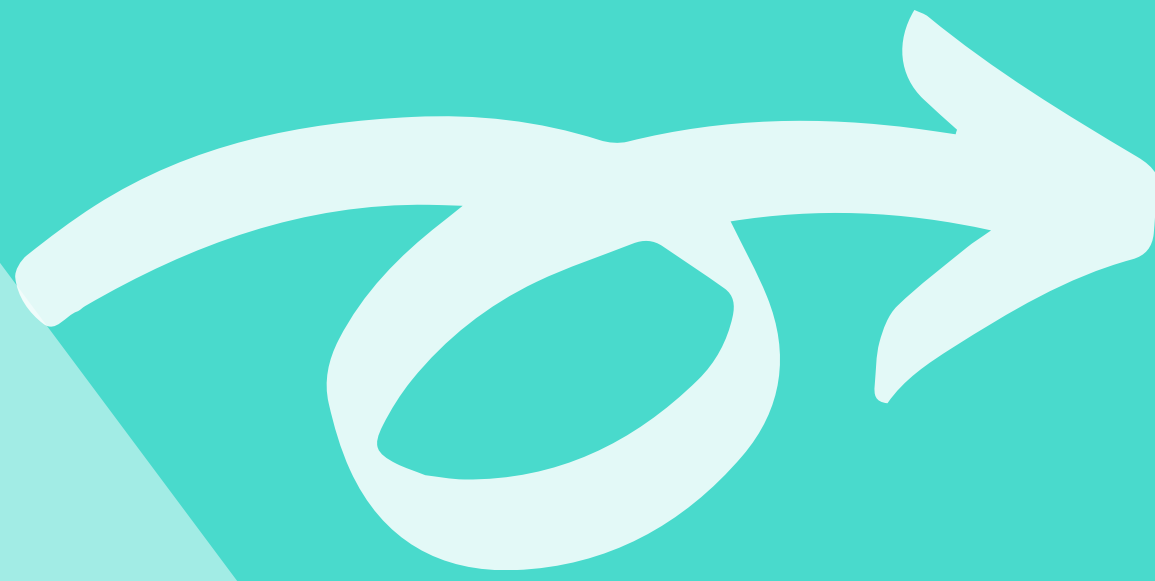


DROPLETS FROM A SICK PERSON'S COUGH OR SNEEZE CAN TRAVEL UP TO SIX FEET (6') THROUGH THE AIR, AND COULD LAND ON THOSE NEARBY



SOCIAL DISTANCING IS DISEASE PREVENTION

Maintain minimum six feet (6') space between yourself and others

Avoid gathering in large groups

Avoid unnecessary travel

Stay at home as much as possible